

**INFORMATION BULLETIN / PUBLIC - BUILDING CODE**

REFERENCE NO.: LABC Sec.11B-703

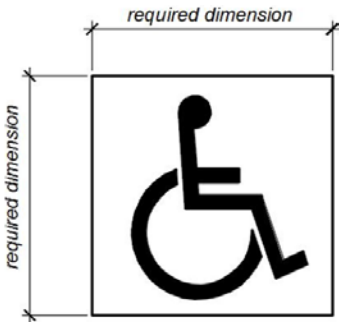
Effective: 01/01/2017

DOCUMENT NO.: **P/BC 2017-091**

Revised: 07/01/2018

Previously Issued As: P/BC 2014-091

**ACCESSIBILITY DETAILS FOR SIGNS**



The International Symbol of Accessibility shall comply with Figure 11B-703.7.2.1. The symbol shall consist of a white figure on a blue background. The blue shall be FS 15090 in Federal Standard 595C. A border may be provided inside or outside of the minimum required (ISA) dimension.

**FIGURE 11B-703.7.2.1  
 INTERNATIONAL SYMBOL OF ACCESSIBILITY (ISA)**



**FIGURE 11B-703.7.2.2  
 INTERNATIONAL SYMBOL OF TTY**

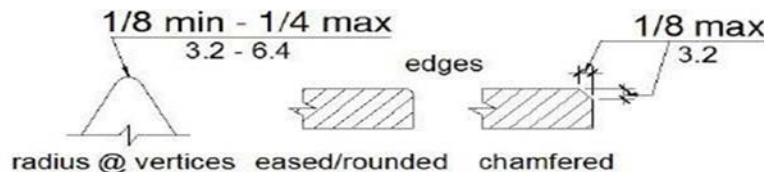
11B-703.7.2.2 International Symbol of TTY. The International Symbol of TTY shall comply with Figure 11B-703.7.2.2

**Volume control telephones.** Telephones with a volume control shall be identified by a pictogram of a telephone handset with radiating sound waves on a square field such as show in Figure 11B-703.7.2.3



**FIGURE 11B-703.7.2.3  
 VOLUME CONTROL TELEPHONE**

**Assistive listening systems.** Assistive listening systems shall be identified by the International Symbol of Access for Hearing Loss complying with Figure 11B-703.7.2.4



**FIGURE 11B-703.7.2.6.4  
 EDGES AND VERTICES ON GEOMETRIC SYMBOLS**

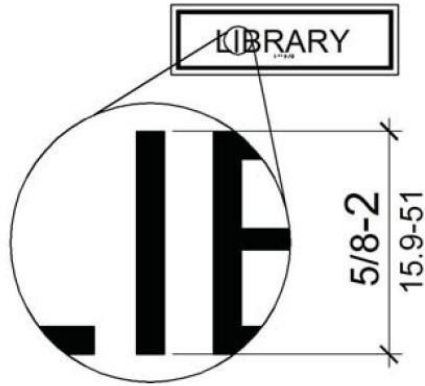
**11B-703 Signs**

**11B-703.1 General.** Signs shall comply with Section 11B- 703. Where both visual and tactile characters are required, either one sign with both visual and tactile characters, or two separate signs, one with visual, and one with tactile characters, shall be provided.

**11B-703.1.1 Plan review and inspection.** Signs as specified in Section 11B-703, or in other sections of this code, when included in the construction of new buildings or facilities, or when included, altered or replaced due to additions, alterations or renovations to existing buildings or facilities, and when a permit is required, shall comply with Sections 11B-703.1.1.1 and 11B-703.1.1.2.

**11B-703.1.1.1 Plan review.** Plans, specifications or other information indicating compliance with these regulations shall be submitted to the enforcing agency for review and approval.

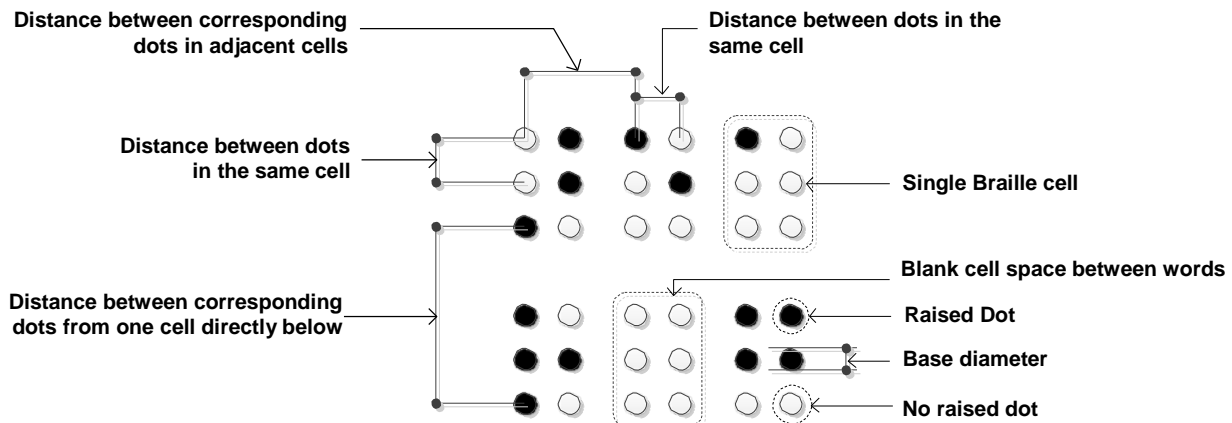
**11B-703.1.1.2 Inspection.** Signs and identification devices shall be field inspected after installation and approved by the enforcing agency prior to the issuance of a final certificate of occupancy per Chapter 1, Division II, Section 111, or final approval where no certificate of occupancy is issued. The inspection shall include, but not be limited to, verification that Braille dots and cells are properly spaced and the size, proportion and type of raised characters are in compliance with these regulations.



**FIGURE 11B-703.2.5**  
**HEIGHT OF RAISED CHARACTERS**

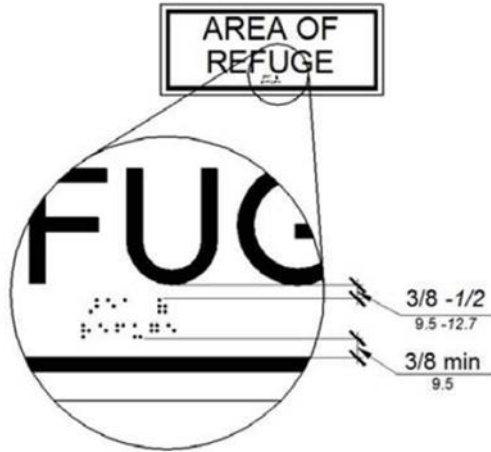
**TABLE 11B-703.3.1**  
**BRAILLE DIMENSIONS**

MEASUREMENT RANGE	MINIMUM IN INCHES MAXIMUM IN INCHES
Dot base diameter	0.059 – 0.063
Distance between two dots in the same cell	0.100
Distance between corresponding dots in adjacent cells	0.300
Dot height	0.025 – 0.037
Distance between corresponding dots from one cell directly below	0.395 – 0.400

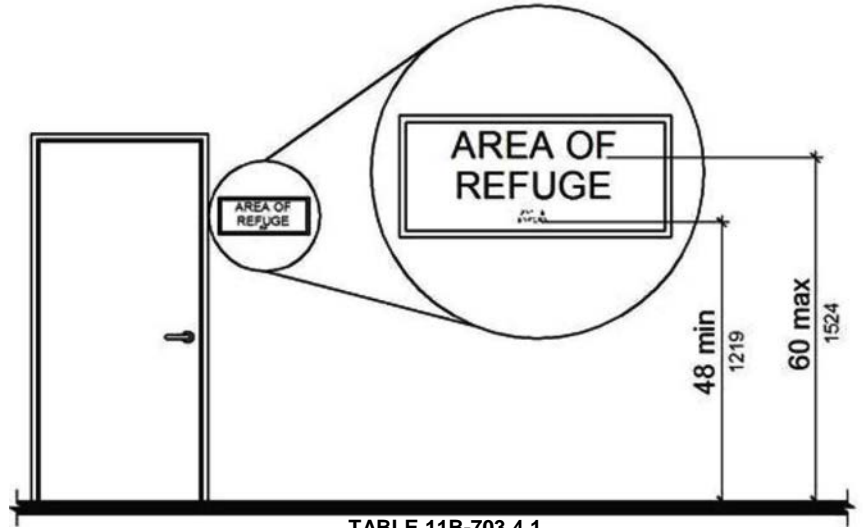


**FIGURE 11B-703.3.1**  
**BRAILLE MEASUREMENT**

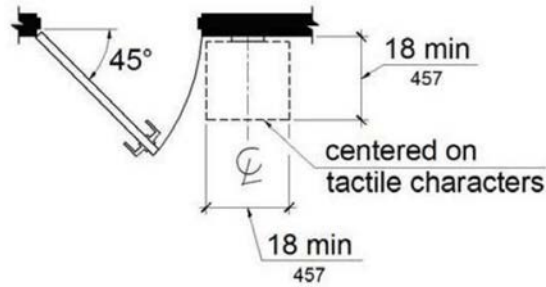
THESE DIAGRAMS ILLUSTRATES THE SPECIFIC REQUIREMENTS OF THESE REGULATIONS AND ARE INTENDED ONLY AS AN AID FOR BUILDING DESIGN AND CONSTRUCTION.



**FIGURE 11B-703.3.2**  
 POSITION OF BRAILLE



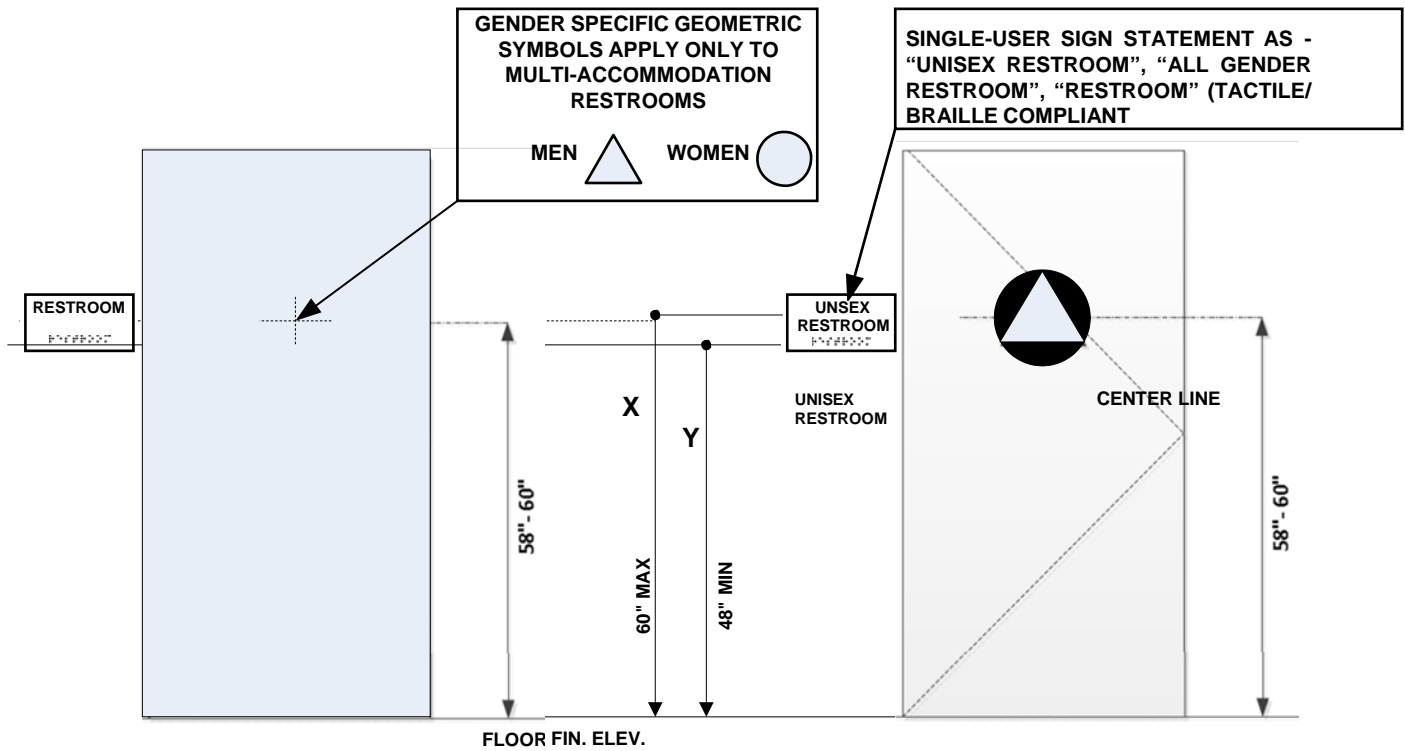
**TABLE 11B-703.4.1**  
 HEIGHT OF TACTILE CHARACTERS  
 ABOVE FINISH FLOOR OR GROUND



**FIGURE 11B-703.4.2**  
 LOCATION OF TACTILE SIGNS AT DOORS

THESE DIAGRAMS ILLUSTRATES THE SPECIFIC REQUIREMENTS OF THESE REGULATIONS AND ARE INTENDED ONLY AS AN AID FOR BUILDING DESIGN AND CONSTRUCTION.

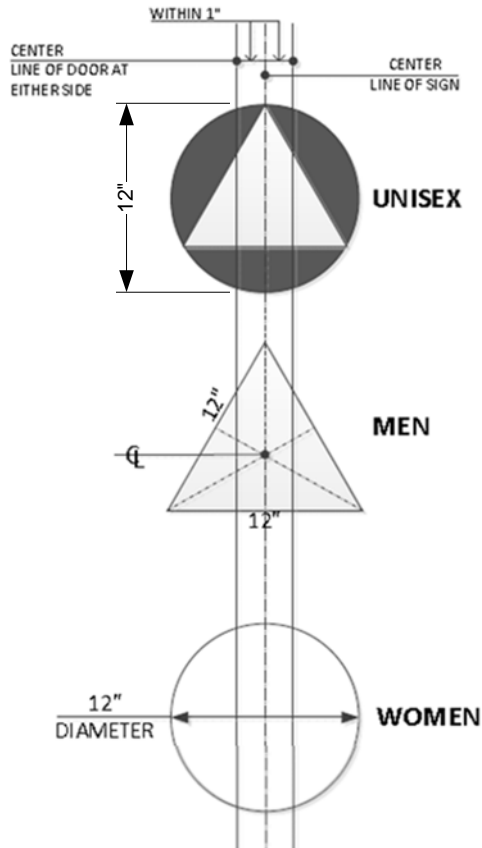
**TOILETS AND BATHING FACILITIES GEOMETRIC SYMBOLS**



FLOOR FIN. ELEV.

**NOTE: PICTOGRAMS NOT REQUIRED**

The provisions of CBC Chapter 11B require that a sanitary facility that is not specifically identified as for "men" or "women" (referred to in Chapter 11B as a "unisex" facility) have a geometric symbol on the door that is an equilateral triangle superimposed onto a circle. The "unisex" symbol is the only specific indicator required to be provided by Chapter 11B for a toilet facility that is available for use by all individuals. No pictogram, text, or braille is required on the symbol. (See attachment, Exhibit A.)



**TACTILE / RAISED CHARACTER & GD-II BRAILLE SIGN**

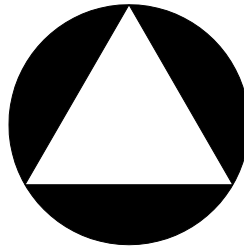
**11B-703.4.1 Height above finish floor or ground.**

Tactile characters on signs shall be located 48 inches (1219 mm) minimum above the finish floor or ground surface, measured from the baseline of the lowest Braille cells and 60 inches (1524 mm) maximum above the finish floor or ground surface, measured from the baseline of the highest line of raised characters. Exception: Tactile characters for elevator car controls shall not be required to comply with Section 11B-703.4.1. 1

## IDENTIFICATION OF ALL GENDER SINGLE-USER TOILET FACILITIES Compliant with the California Building Code (CBC) Chapter 11B

### EXHIBIT A - Door Symbol (required by the CBC)

This image represents the door symbol that is required by CBC 11B-216.8 to identify an all-gender/unisex single-user toilet facility. The symbol must comply with the requirements of CBC 11B-703.7.2.6.3. No pictogram, text, or braille is required on the symbol.



### EXHIBIT B - Designation sign on wall

Designation signs are not required to be provided by the CBC or the 2010 ADAS. If provided, a designation sign adjacent to the door must comply with the scoping requirements of CBC 11B-216.2, and the technical requirements for raised characters (CBC 11B-703.2), braille (CBC 11B-703.3), visual characters (CBC 11B-703.5), and requirements for installation height and location (CBC 11B-703.4). No pictogram is required. The following signs illustrate acceptable examples for designation sign text:

