



ORGANIZATIONAL CHART & TELEPHONE DIRECTORY

This directory is designed to:

1. Give users direct access to the Department's top-level management and supervisory personnel, and
2. To see where the managers and supervisors fit into the Department's chain-of-command structure.

FOR AUTOMATED INSPECTION REQUESTS ONLY,
YOU MAY CALL TOLL FREE FROM ANYWHERE
IN LOS ANGELES COUNTY:

1-888-LA-4-BUILD

OR

OUTSIDE LOS ANGELES COUNTY

213-482-0000

TDD Line 888-833-8389

FOR ALL OTHER SERVICES OR INFORMATION WITHIN
THE CITY OF LOS ANGELES

3-1-1

OR

OUTSIDE LOS ANGELES CITY

1-213-473-3231

For more information regarding the Los Angeles Department of Building and Safety, please visit www.ladbs.org.



LADBS ADMINISTRATIVE/HEADQUARTER OFFICES
 201 NORTH FIGUEROA STREET, SUITE 1000
 LOS ANGELES, CALIFORNIA 90012

PERMIT/DEVELOPMENT SERVICES OFFICES

- DEVELOPMENT SERVICES CASE MANAGEMENT DIVISION
 201 N. Figueroa Street, Suite 1030
 Los Angeles, CA 90012

- METRO DEVELOPMENT SERVICES CENTER
 201 N. Figueroa Street, 4th Floor Los Angeles, CA 90012
 Permit and Engineering Bureau Administration – 10th Floor
 Records Research and Express Permits – 1st Floor
 Plan Check – 4th Floor (Electrical and Mechanical)
 Electrical and Mechanical Engineering – 5th Floor
 Green Buildings – 5th Floor
 Disabled Access Appeals – 8th Floor
 Structural Engineering Research – 8th Floor
 Board of Building and Safety Commission Office – 10th Floor
 Engineering Plan Check – 10th Floor

- VAN NUYS DEVELOPMENT SERVICES CENTER
 6262 Van Nuys Boulevard, 2nd Floor, Room 251
 Van Nuys, CA 91401

- WEST LOS ANGELES DEVELOPMENT SERVICES CENTER
 1828 Sawtelle Boulevard, 2nd Floor
 Los Angeles, CA 90025

- SAN PEDRO DEVELOPMENT SERVICES CENTER
 638 S. Beacon Street, 2nd Floor, San Pedro, CA 90731

- SOUTH LOS ANGELES DEVELOPMENT SERVICES CENTER
 1968 W. Adams Blvd.
 Los Angeles, CA 90018

- TEST LAB
 Electrical Testing Lab
 201 N. Figueroa Street, Suite 500, Los Angeles, CA 90012

- Mechanical Testing Lab
 201 N. Figueroa Street, Suite 500, Los Angeles, CA 90012

INSPECTION OFFICES

- INSPECTION BUREAU
 221 N. Figueroa Street, 7th, 8th and 12th Floors
 Los Angeles, CA 90012
 Bureau Management – 8th Floor
 Commercial Inspection, Building Insp. Division - 7th Floor
 (Electrical, HVAC, Plumbing, Fire Sprinkler & Mechanical)
 Materials Control – 7th Floor
 Special Events – 7th Floor
 Investigations/Earthquake Safety/Hi-Rise Retrofit – 7th Floor
 Certified Licensing Contractor – 7th Floor
 Trade Licensing – 7th Floor
 Residential Inspection – 8th Floor
 Elevator and Pressure Vessels – 8th Floor
 Inspection Case Management – 8th Floor
 Restaurant and Small Business Express Program (RSBEP)
 – 8th Floor
 Inspections and Investigations – 8th Floor
 Training and Emergency Management Division – 8th Floor
 Grading and Engineering Inspection – 12th Floor

- VAN NUYS INSPECTION DIVISION
 6262 Van Nuys Boulevard, Ste. 200
 Van Nuys, CA 91401

- 19040 Vanowen Street
 Reseda, CA 91335
 Residential Inspection

- WEST LOS ANGELES INSPECTION DIVISION
 11620 Wilshire Boulevard, Suite 1100
 Los Angeles, CA 90025

- SAN PEDRO COMMERCIAL & RESIDENTIAL
 INSPECTION DIVISIONS
 638 S. Beacon Street, 2nd Floor
 San Pedro, CA 90731

CODE ENFORCEMENT OFFICES

- CODE ENFORCEMENT BUREAU
 221 N. Figueroa Street, 11th and 12th Floors
 Los Angeles, CA 90012

- CENTRAL REGION
 Centralized Specialty Division – 11th Floor
 Administration and Liens – 11th Floor
 Pro Active Code Enforcement – 11th Floor
 Vacant Building Abatement – 11th Floor
 Signs-Enforcement & New – 11th Floor
 Off-Site Signs Program – 11th Floor
 General Code Enforcement – 11th Floor
 Annual Inspection Monitoring – 11th Floor
 Local Enforcement Agency – 12th Floor

- 2130 E. 1st Street – 4th Floor, Suite 2101
 Los Angeles, CA 90033

- CEIS Development Team
 201 N. Figueroa Street, 9th Floor
 Los Angeles, CA 90012

- NORTH REGION
 Van Nuys City Hall
 14410 Sylvan Street, Suite 105
 Los Angeles, CA 91401

- SOUTH REGION
 1968 W. Adams Boulevard, Suite G-16
 Los Angeles, CA 90018

- 4301 S. Central Avenue
 Los Angeles, CA 90011

- 221 N Figueroa Street, 11th Floor
 Los Angeles, CA 90012

- 7166 Manchester Avenue, Suite 10A
 Los Angeles, CA 90045

- 638 Beacon Street, Suite 276
 San Pedro, CA 90731

TELEPHONE DIRECTORY INDEX

DEPARTMENT OF BUILDING AND SAFETY

Executive and Bureau Management Chart 1
 Government and Community Relations Division..... Chart 2
 Personnel Services Chart 3

PERMIT AND ENGINEERING BUREAU

Permit and Engineering Bureau Management Chart 4
 Development Services Case Management Division
 Case Management Chart 5
 Preliminary Review..... Chart 5
 LAX Chart 5
 Structural Plan Check Division
 Metro Plan Check Chart 6
 Van Nuys District Office Chart 6
 West LA District Office Chart 6
 High-Rise and Seismic Retrofit Division
 Soft-Story Retrofit Program Chart 7
 High-Rise and Non-Ductile Concrete Buildings Chart 7
 Building Research Chart 7
 Structural Plan Check Counter Division
 Metro Plan Check Chart 8
 South LA District Office Chart 8
 Van Nuys District Office Chart 8
 West LA District Office Chart 8
 San Pedro District Office Chart 8
 Concierge Services Chart 8
 Green/Electrical/Mechanical (GEM) Plan Check Division
 Green Building Plan Check / Inspection Chart 9
 Mechanical Plan Check and Test Lab Chart 9
 Electrical Plan Check and Test Lab..... Chart 9

INSPECTION BUREAU

Commercial Building Inspection Chart 10
 Elevator and Pressure Vessel Chart 10
 Commercial Inspection Chart 11
 Plumbing, Heating and Fire Sprinkler / Electrical
 Residential Inspection Chart 12
 Metro / Van Nuys / West LA / San Pedro
 Grading Engineering and Inspection Chart 12
 Training and Emergency Management Division Chart 12

CODE ENFORCEMENT BUREAU

Citywide Signs Code Enforcement Chart 13
 General Enforcement and Annual Inspection Monitoring Chart 13
 Citywide Pro-Active Code Enforcement..... Chart 13
 Citywide Vacant Building Abatement and Foreclosure Registry Program Chart 13
 Environmental Affairs Division, Local Enforcement Agency Chart 14

RESOURCE MANAGEMENT BUREAU

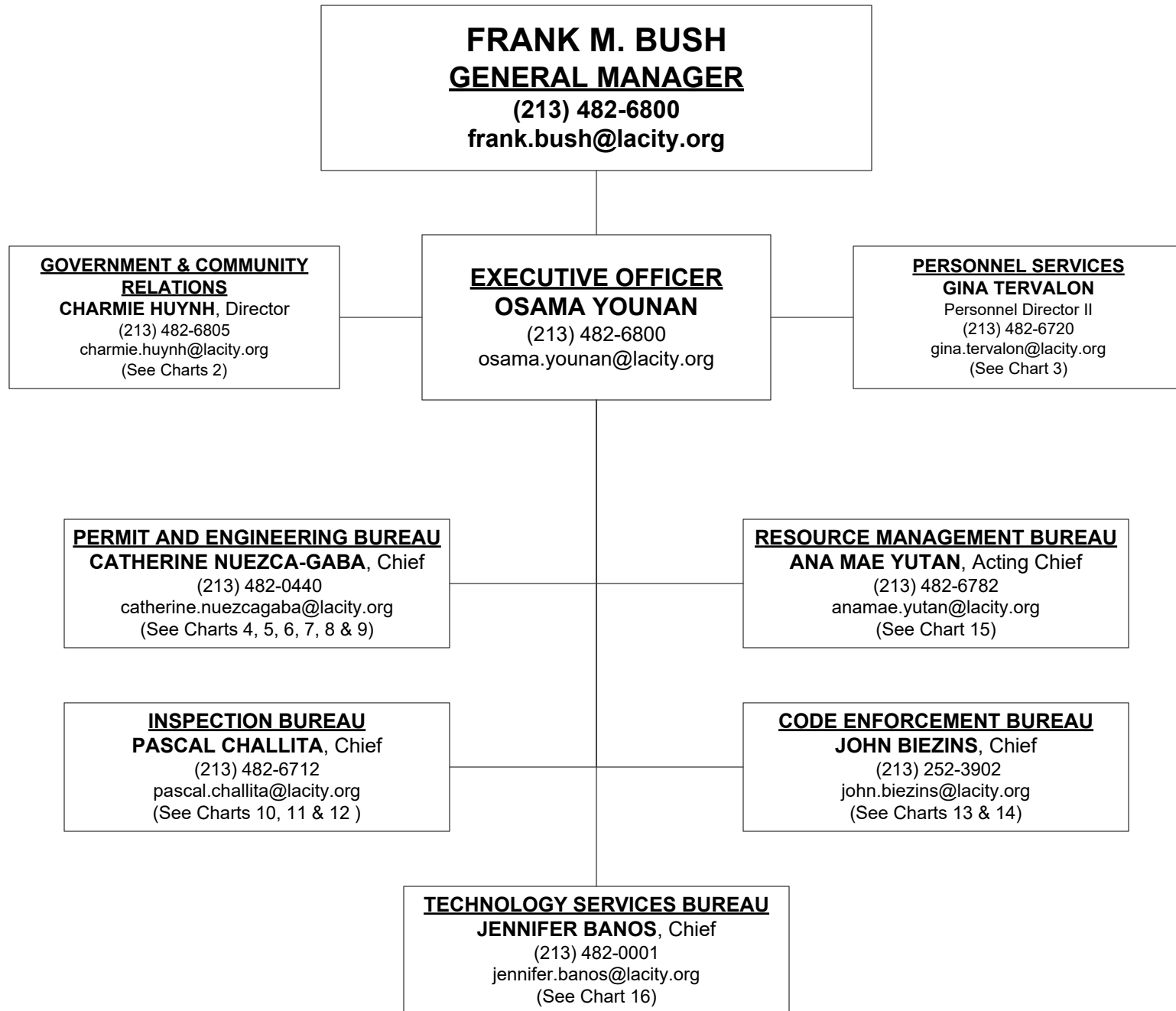
Administrative Services Division Chart 15
 Financial Services Division Chart 15
 Risk and Records Management Division Chart 15

TECHNOLOGY SERVICES BUREAU

Customer Engagement Division Chart 16
 Application Services Division..... Chart 16
 Operations and Infrastructure Division Chart 16
 Administration Division Chart 16

DEPARTMENT OF BUILDING AND SAFETY

Chart 1



**GOVERNMENT & COMMUNITY RELATIONS
DIVISION**
CHARMIE HUYNH, Director
(213) 482-6805
charmie.huynh@lacity.org

**SPECIAL ASSISTANCE TO
EXECUTIVE OFFICE**
MICHAEL PEREZ
Struc Engr Assc III
(213) 482-6520
michael.x.perez@lacity.org

BUILDLA
KAREN PENERA
Project Manager
(213) 482-6749
karen.penera@lacity.org

CAROLYNN JUACALLA
Struc Engr Assc III
(213) 482-0096
carolynn.nepomuceno@lacity.org

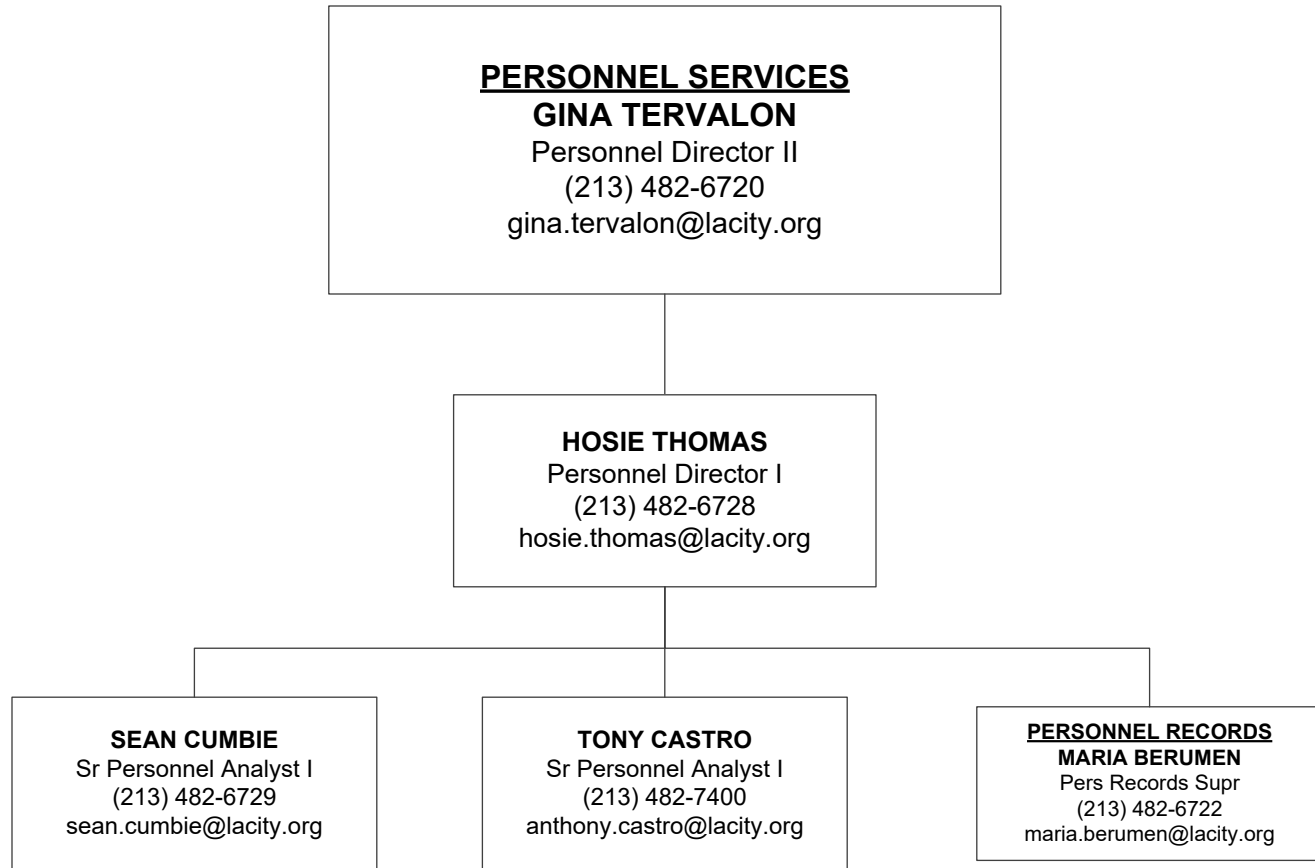


Chart 4

PERMIT AND ENGINEERING BUREAU
CATHERINE NUEZCA-GABA, Chief
(213) 482-0440
catherine.nuezcagaba@lacity.org

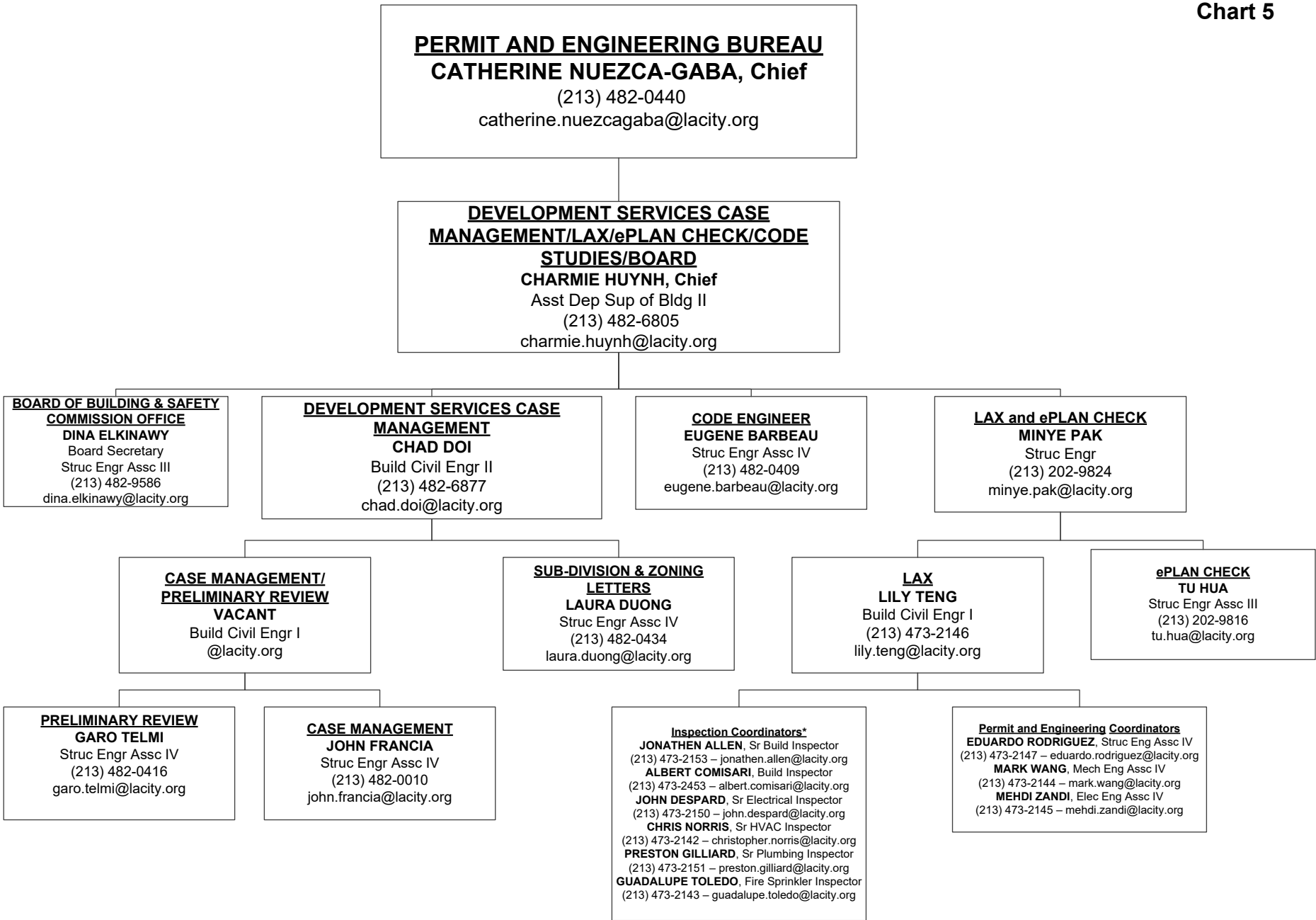
STRUCTURAL PLAN CHECK DIVISION
VICTOR CUEVAS, Chief
Asst Dep Sup of Bldg II
(213) 482-0440
victor.cuevas@lacity.org
See Chart 6

HIGH-RISE AND SEISMIC RETROFIT DIVISION
SHAHEN AKELYAN, Chief
Asst Dep Sup of Bldg II
(213) 482-0440
shahen.akelyan@lacity.org
See Chart 7

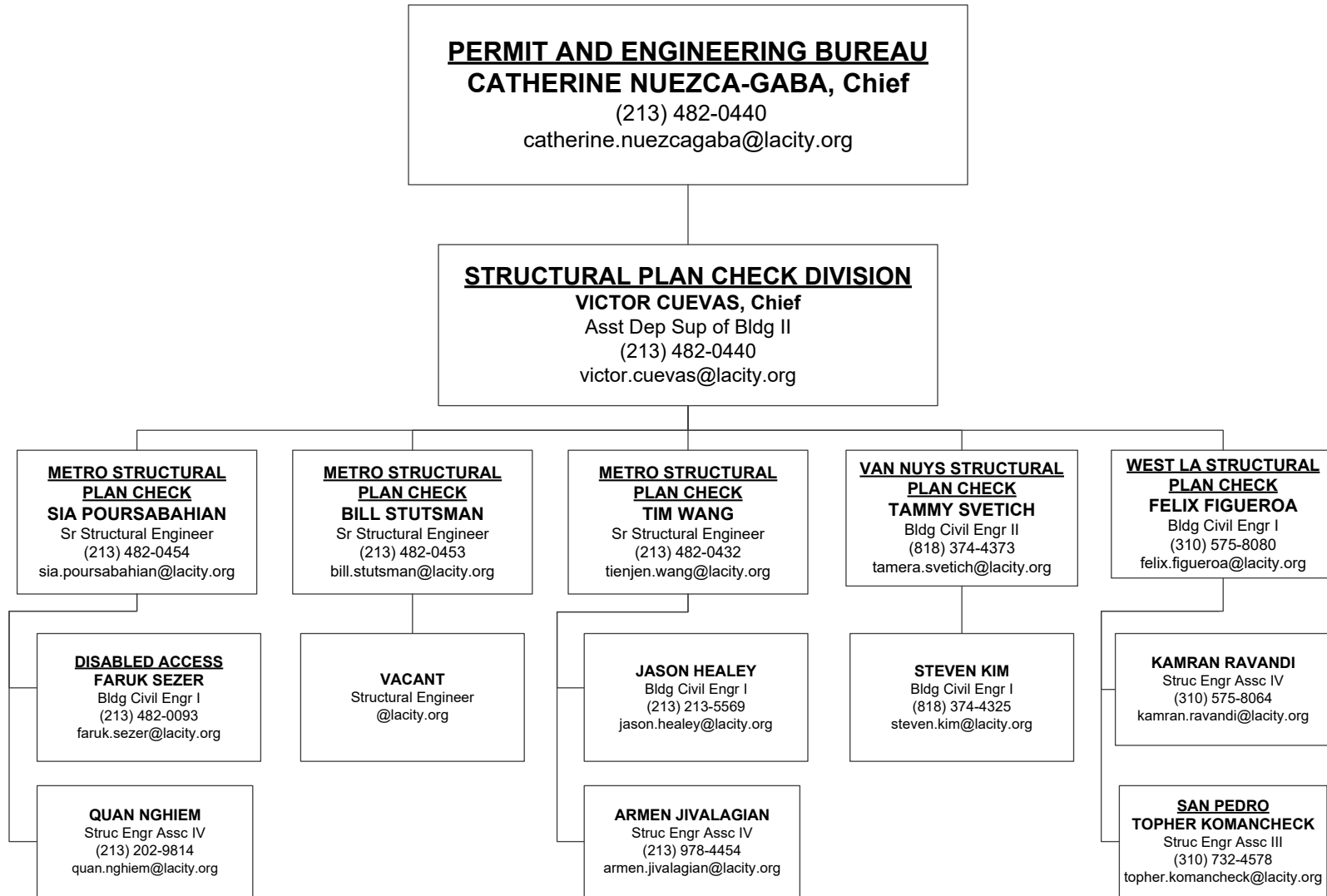
STRUCTURAL PLAN CHECK COUNTER DIVISION
ARA SARGSYAN, Chief
Asst Dep Sup of Bldg II
(213) 482-0440
ara.sargsyan@lacity.org
See Chart 8

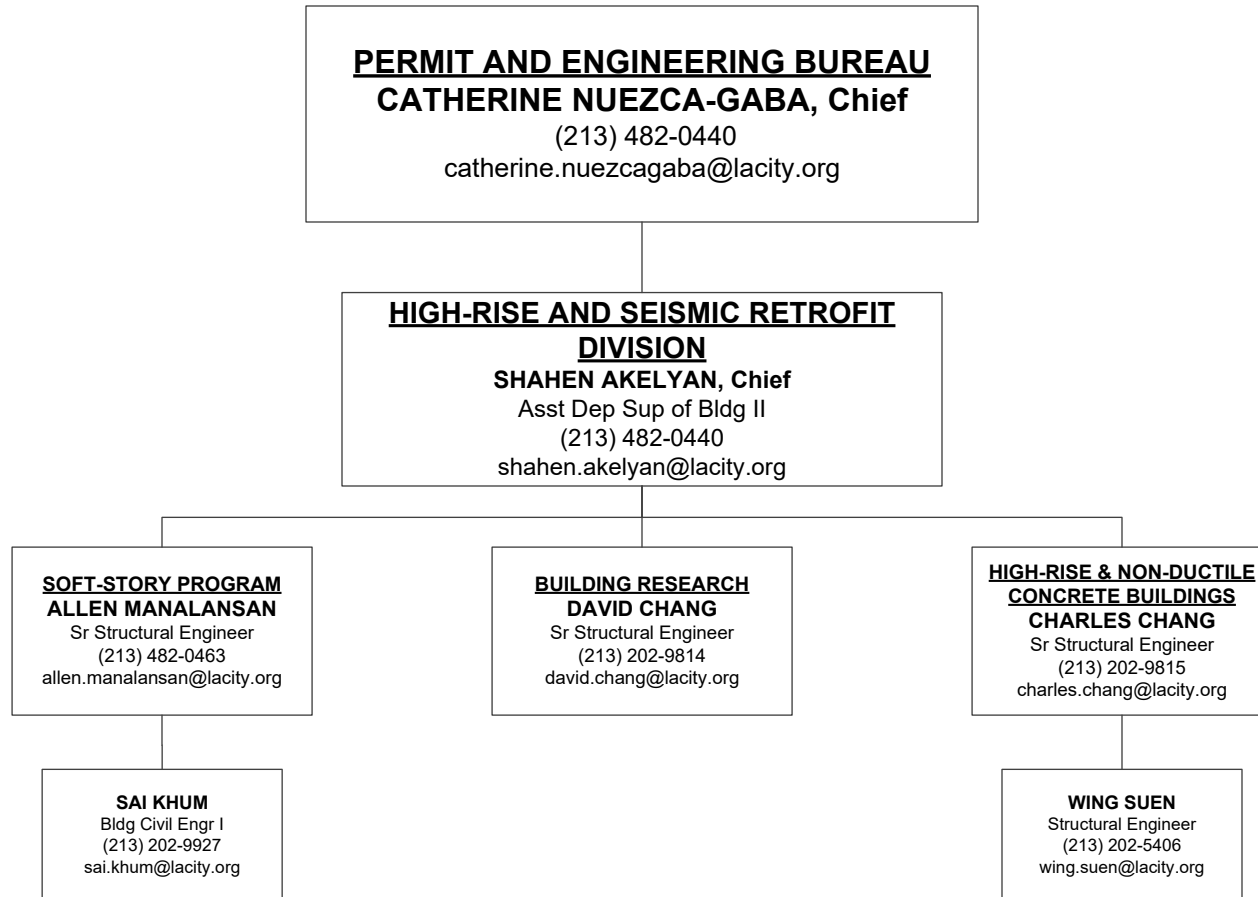
GREEN/ELECTRICAL/ MECHANICAL DIVISION
ADEL SALAH EDDINE, Chief
Asst Dep Sup of Bldg II
(213) 482-0053
adel.salah-eddine@lacity.org
See Chart 9

DEVELOPMENT SERVICES CASE MANAGEMENT/LAX/ ePLAN CHECK DIVISION
CHARMIE HUYNH, Chief
Asst Dep Sup of Bldg II
(213) 482-6875
charmie.huynh@lacity.org
See Chart 5



*Reporting to Inspection Bureau





PERMIT AND ENGINEERING BUREAU
CATHERINE NUEZCA-GABA, Chief
 (213) 482-0440
 catherine.nuezcagaba@lacity.org

STRUCTURAL PLAN CHECK COUNTER DIVISION
ARA SARGSYAN, Chief
 Asst Dep Sup of Bldg II
 (213) 482-0440
 ara.sargsyan@lacity.org

METRO COUNTER PLAN CHECK
CORA JOHNSON
 Bldg Civil Engr II
 (213) 482-0092
 cora.johnson@lacity.org

VAN NUYS COUNTER PLAN CHECK
BINH PHAN
 Bldg Civil Engr II
 (818) 374-4307
 binh.phan@lacity.org

WEST LA
FELIX FIGUEROA
 Bldg Civil Engr I
 (310) 575-8080
 felix.figueroa@lacity.org

EXPRESS PERMITS, RECORDS & PLAN CHECK SUPPORT
KATHLEEN RAYGOZA
 Chief Clerk
 (213) 482-6847
 kathleen.raygoza@lacity.org

METRO COUNTER
CHIHARU SUZUKI
 Bldg Civil Engr I
 (213) 482-0082
 chiharu.suzuki@lacity.org

ALDO UBAU
 Bldg Civil Engr I
 (818) 374-4386
 aldo.ubau@lacity.org

COUNTER PLAN CHECK
TARIK SAOUD
 Struc Engr Assc III
 (310) 575-8097
 tarik.saoud@lacity.org

SAN PEDRO EXPRESS PERMITS
IDA MIRANDA
 Sr Admin Clerk
 (310) 732-4545
 ida.miranda@lacity.org

VAN NUYS RECORDS/ EXPRESS PERMITS COUNTER
JON BLAINE
 Principal Clerk
 (818) 374-7538
 jon.blaine@lacity.org

METRO EXPRESS PERMITS/ RECORDS COUNTER
JENNY AYALA
 Principal Clerk
 (213) 482-6851
 jenny.ayala@lacity.org

METRO STRUCTURAL PLAN CHECK, COUNTER, AND RESEARCH
JEANNETTE MONTGOMERY
 Principal Clerk
 (213) 482-0461
 jeannette.montgomery@lacity.org

WLA EXPRESS PERMITS
YVONNE TREMBLE
 Sr Admin Clerk
 (310) 575-8181
 yvonne.tremble@lacity.org

SOUTH LA OFFICE
TEO DIAZ
 Struc Engr Assc III
 (323) 789-2782
 teo.diaz@lacity.org

VAN NUYS CONCIERGE SERVICES
YAQUB MIRZA
 Struc Engr Assc II
 (818) 374-9938
 yaqub.mirza@lacity.org

SAN PEDRO OFFICE
TOPHER KOMANCHECK
 Struc Engr Assc III
 (310) 732-4578
 topher.komanchek@lacity.org

RECORDS COUNTER
MICHELLE CORTEZ
 Sr Admin Clerk
 (818) 374-4390
 michelle.cortez@lacity.org

METRO RECORDS COUNTER
TERRY RAZO
 Sr Admin Clerk
 (213) 482-6853
 terry.razo@lacity.org

EXPRESS COUNTER
RENEE MARTIN
 Sr Admin Clerk
 (818) 374-4345
 renee.martin@lacity.org

SLA EXPRESS PERMITS
OSCAR GOMEZ
 Sr Admin Clerk
 (323) 789-2782
 oscar.gomez@lacity.org

METRO CONCIERGE SERVICES
TSE MING HUANG
 Struc Engr Assc II
 (213) 482-7432
 tse-ming.huang@lacity.org

METRO EXPRESS PERMITS
SAMUEL CRUZ
 Sr Admin Clerk
 (213) 482-6840
 samuel.cruz@lacity.org

PERMIT AND ENGINEERING BUREAU
CATHERINE NUEZCA-GABA, Chief
 (213) 482-0440
 catherine.nuezcagaba@lacity.org

GREEN, ELECTRICAL & MECHANICAL DIVISION
ADEL SALAH EDDINE, Chief
 Asst Dep Sup of Bldg II
 (213) 482-0053
 adel.salah-eddine@lacity.org

GREEN BUILDING
VACANT
 Bldg Civil Engr II
 (213) 202-3450
 @lacity.org

GREEN BLDG PLAN CHECK
SEAN DANG
 Bldg Civil Engr I
 (213) 202-3427
 sean.dang@lacity.org

VAN NUYS
MICHAEL SCOTT AYERS
 Struc Engr Assc IV
 (818) 374-4308
 michaelsscott.ayers@lacity.org

METRO & WLA PLAN CHECK
DONALD CRICLOW
 Sr Bldg Mech Insp
 (213) 202-3410
 donald.crichlow@lacity.org

WEST LA
RICHARD GARCIA
 Struc Engr Assc II
 (310) 575-8095
 richard.garcia@lacity.org

METRO PLAN CHECK
NEGAR NEJAD
 Struc Engr Assc II
 (213) 482-0436
 negar.nejad@lacity.org

VN PLAN CHECK
DAVE MATSON
 Sr Bldg Mech Insp
 (818) 374-9989
 dave.matson@lacity.org

MECHANICAL PLAN CHECK
VACANT
 (213) 482-0410
 @lacity.org

MIKE SHAHRESTANI
 Mech Engr Assc IV
 (213) 482-6940
 mike.shahrestani@lacity.org

VAN NUYS MECHANICAL PLAN CHECK & COUNTER
MANUEL HERNANDEZ
 Mech Engr Assc III
 (818) 374-4372
 manuel.hernandez@lacity.org

METRO MECHANICAL PLAN CHECK COUNTER
GREG ARBUCKLE
 Mech Engr Assc III
 (213) 202-2791
 gregory.arbuckle@lacity.org

METRO MECHANICAL PLAN CHECK (LAX)
MARK WANG
 Mech Engr Assc III
 (213) 482-0439
 mark.wang@lacity.org

MECHANICAL TEST LAB
IRENE POOL TAMAYO
 Mech Engr Assc III
 (213) 482-0065
 irene.pool.tamayo@lacity.org

METRO MECHANICAL PLAN CHECK
RAWAND ARYAN
 Mech Engr Assc III
 (213) 482-0406
 rawand.aryan@lacity.org

ELECTRICAL PLAN CHECK
NABIL MAALOUF
 Bldg Elec Engr II
 (213) 482-0052
 nabil.maalouf@lacity.org

METRO ELECTRICAL PLAN CHECK
FRANCIS YSAGUIRRE
 Elec Engr Assc IV
 (213) 482-0064
 francis.ysaguirre@lacity.org

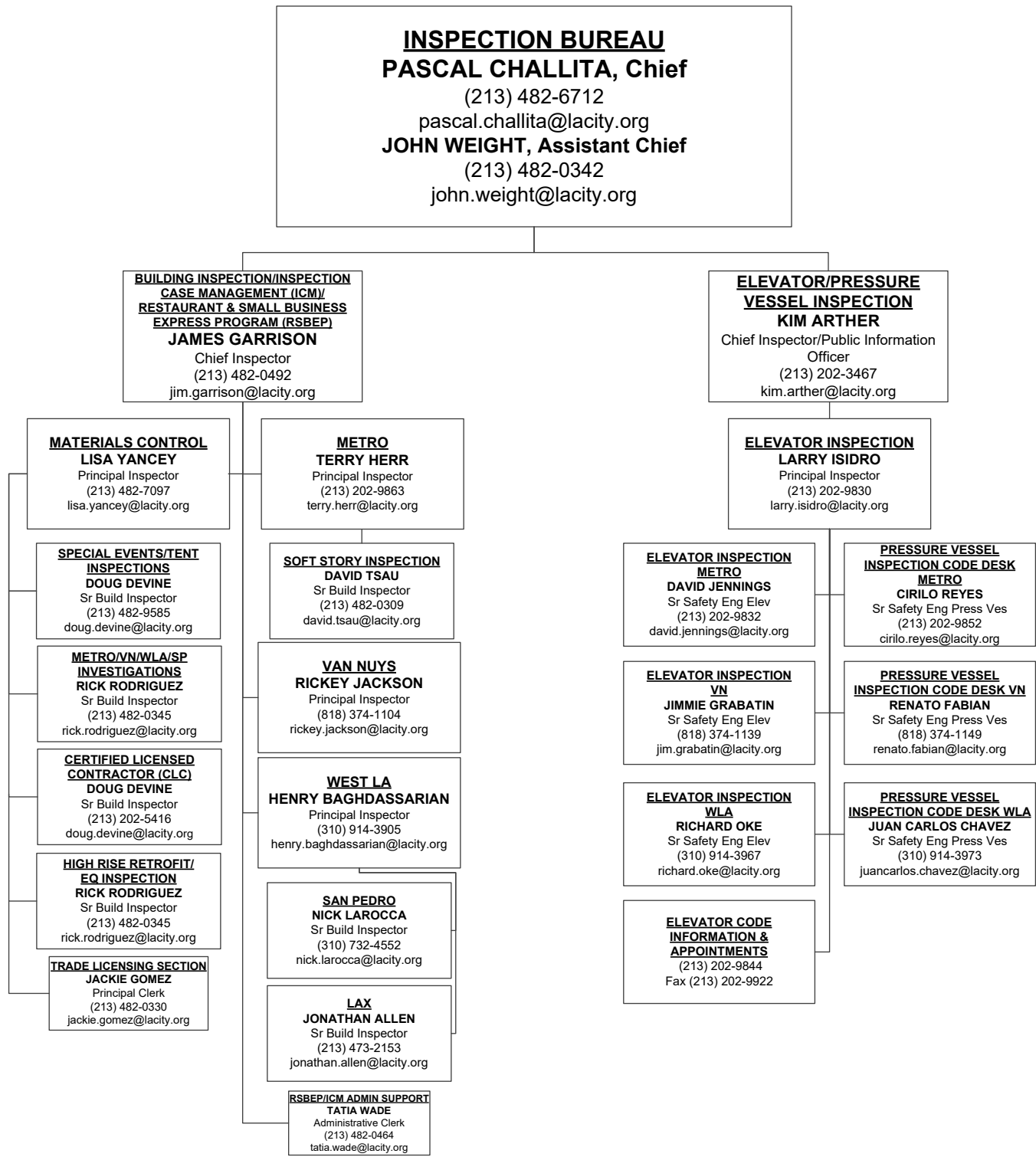
VAN NUYS ELECTRICAL PLAN CHECK & COUNTER
ERIC GOSS
 Elec Engr Assc III
 (818) 374-4343
 eric.goss@lacity.org

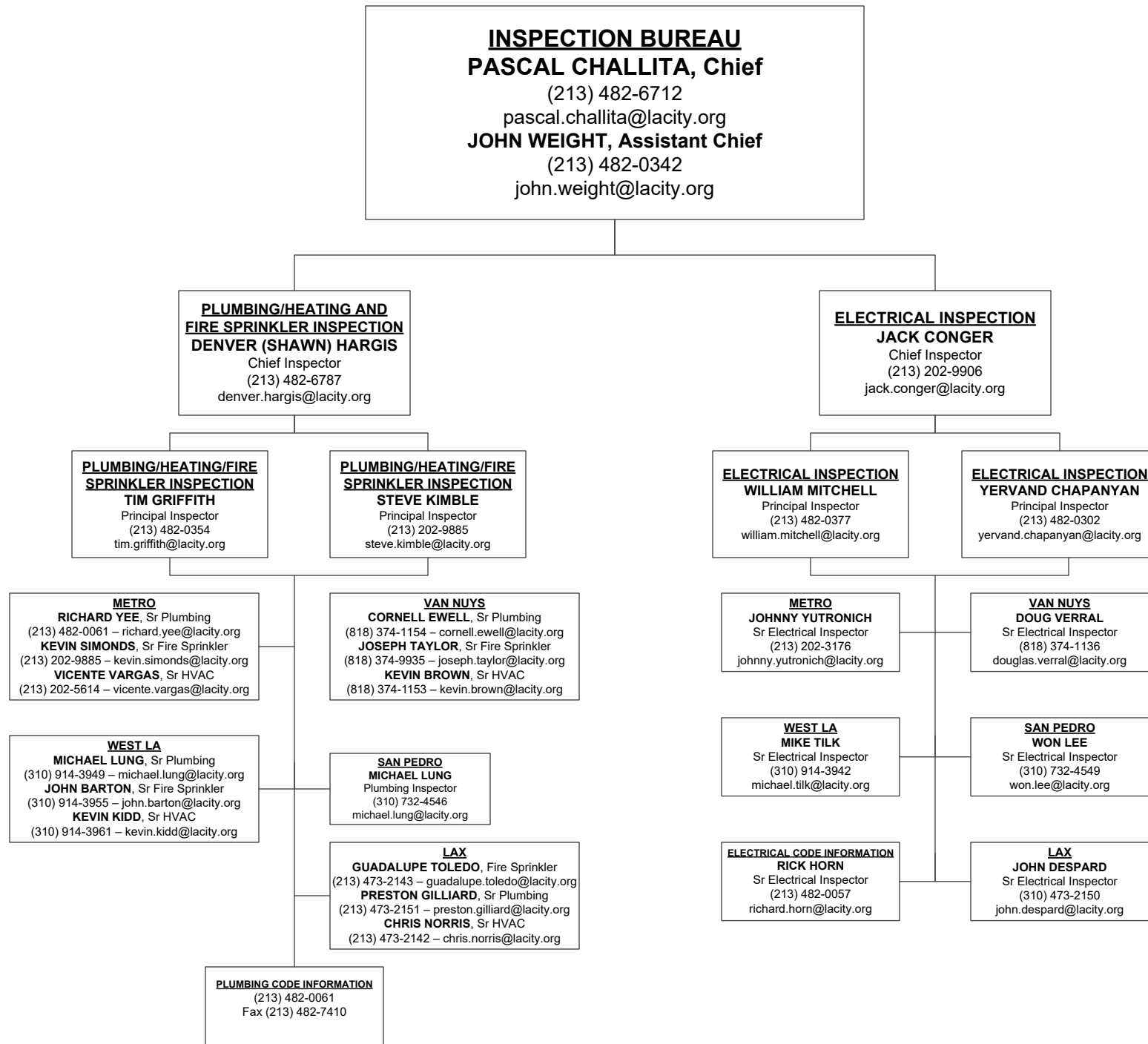
METRO ELECTRICAL PC CNTR/TESTLAB/EBEWE/LAX
NABIL MAALOUF
 Bldg Elec Engr II
 (213) 482-0052
 nabil.maalouf@lacity.org

ELECTRICAL TEST LAB
BEHROOZ HOORIANI
 Elec Engr Assc IV
 (213) 482-0045
 behrooz.hooriani@lacity.org

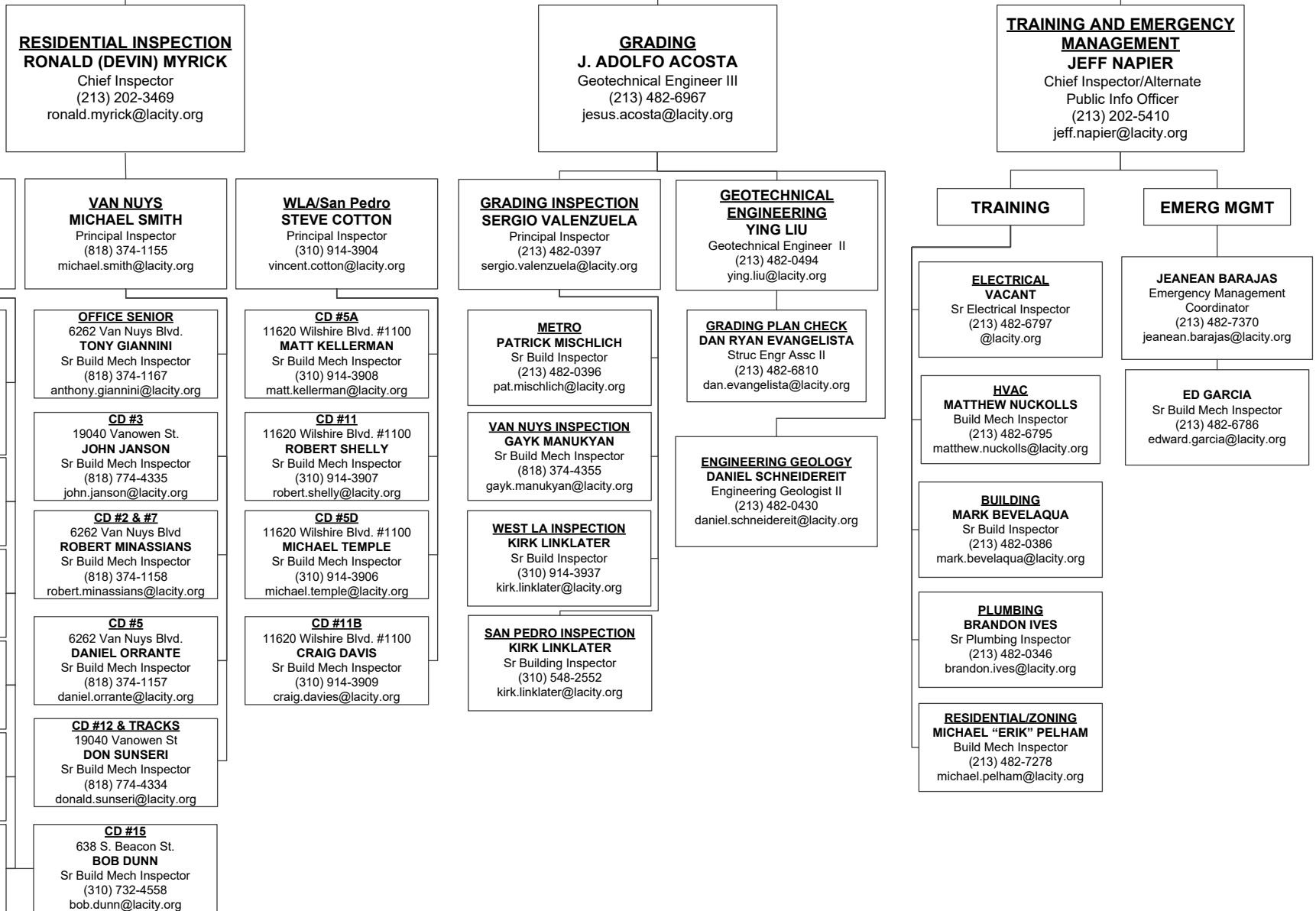
METRO ELECTRICAL PLAN CHECK COUNTER
FRANCIS YSAGUIRRE
 Elec Engr Assc IV
 (213) 482-0064
 francis.ysaguirre@lacity.org

METRO ELECTRICAL PLAN CHECK (LAX)
MEHDI ZANDI
 Elec Engr Assc IV
 (213) 482-7114
 mehdi.zandi@lacity.org





INSPECTION BUREAU
PASCAL CHALLITA, Chief
 (213) 482-6712
 pascal.challita@lacity.org
ERIC JAKEMAN, Assistant Chief
 (213) 202-9869
 eric.jakeman@lacity.org



CODE ENFORCEMENT BUREAU

JOHN BIEZINS, Chief

(213) 252-3902

john.biezins@lacity.org

FRANK LARA, Assistant Chief

(213) 252-3310

frank.lara@lacity.org

FAITH MAULUPE
Principal Clerk
(213) 252-3376
faith.maulupe@lacity.org

GENERAL ENFORCEMENT & SPECIALTY/SIGNS INSPECTION

JOHN WHIPPLE

Chief Inspector
(213) 252-3040

john.whipple@lacity.org

GENERAL ENFORCEMENT, ANNUAL INSPECTION MONITORING, PROACTIVE CODE ENFORCEMENT, & VACANT BUILDING ABATEMENT

ANDREW LONGORIA

Chief Inspector
(213) 252-3931

andrew.longoria@lacity.org

CITYWIDE SIGNS
ARMOND GREGORYONA
Principal Inspector
(213) 252-3082
armond.gregoryona@lacity.org

CENTRAL REGION GENERAL ENFORCEMENT
DANIEL SANCHEZ
Principal Inspector
(213) 252-3926
daniel.sanchez@lacity.org

SOUTH REGION GENERAL ENFORCEMENT
BRUCE TODD
Principal Inspector
(213) 978-4502
bruce.todd@lacity.org

CITYWIDE ANNUAL INSPECTION MONITORING
MIKE BEVERIDGE
Principal Inspector
(818) 374-9806
michael.beveridge@lacity.org

NORTH REGION GENERAL ENFORCEMENT
MIKE BEVERIDGE
Principal Inspector
(818) 374-9806
michael.beveridge@lacity.org

CITYWIDE PAGE 2 & 3
ARMOND GREGORYONA
Principal Inspector
(213) 252-3082
armond.gregoryona@lacity.org

CITYWIDE VBA & FORECLOSURE REGISTRY PROGRAM
ARMOND GREGORYONA
Principal Inspector
(213) 252-3082
armond.gregoryona@lacity.org

SIGN ENFORCEMENT
VACANT
Sr Build Mech Inspector
(213) 252-3082
@lacity.org

NEW CONSTRUCTION
VACANT
Sr Build Mech Inspector
(213) 252-3082
@lacity.org

OFF-SITE SIGNS PERIODIC INSPECTION PROGRAM
VACANT
Sr Build Mech Inspector
(213) 252-3082
@lacity.org

CD #1
AUGUSTUS ALBAS
Sr Build Mech Inspector
(213) 252-3038
augustus.albas@lacity.org

CD #4
SHAWN ESHBACH
Sr Build Mech Inspector
(213) 482-0469
shawn.eshbach@lacity.org

CD #5
DAVID HICKMAN
Sr Build Mech Inspector
(213) 252-3049
david.hickman@lacity.org

CD #13
PAUL CHOPP
Sr Build Mech Inspector
(213) 252-3960
paul.chopp@lacity.org

CD #14
MARK VAN SLOOTEN
Sr Build Mech Inspector
(323) 526-9348
mark.vanslooten@lacity.org

LEGAL LIAISON
BRYAN EPSTEIN
Sr. Fire Sprinkler Inspector
(213) 252-3393
bryan.epstein@lacity.org

CD #8
HAL FULTZ
Sr Build Mech Inspector
(213) 978-4504
hal.fultz@lacity.org

CD #9
SAM PORTILLO
Sr Build Mech Inspector
(213) 978-4495
sam.portillo@lacity.org

CD #10
JOHN JAEGER
Sr Build Mech Inspector
(213) 252-3964
john.jaegers@lacity.org

CD #11
JOHN MATTILLO
Sr Build Mech Inspector
(213) 978-4498
john.mattillo@lacity.org

CD #15
JOHN JONES
Sr Build Mech Inspector
(310) 732-4530
john.w.jones@lacity.org

LEGAL LIAISON
CLAUDIO MORENO
Sr Build Mech Inspector
(213) 978-4503
claudio.moreno@lacity.org

NORTH REGION
WILLIE ROSS
Sr Build Mech Inspector
(818) 374-9837
willie.ross@lacity.org

METRO REGION
JASON SUMMERS
Sr Build Mech Inspector
(213) 252-3041
jason.summers@lacity.org

CD #2
DAVID JAMES
Sr Build Mech Inspector
(818) 374-9858
dave.james@lacity.org

CD #3
ROBERT SUNSERI
Sr Build Mech Inspector
(818) 374-9857
robert.sunseri@lacity.org

CD #6
DAVID JAMES
Sr Build Mech Inspector
(818) 374-9858
dave.james@lacity.org

CD #7
MARSHAL RUMPF
Sr Build Mech Inspector
(818) 374-9820
marshall.rumpf@lacity.org

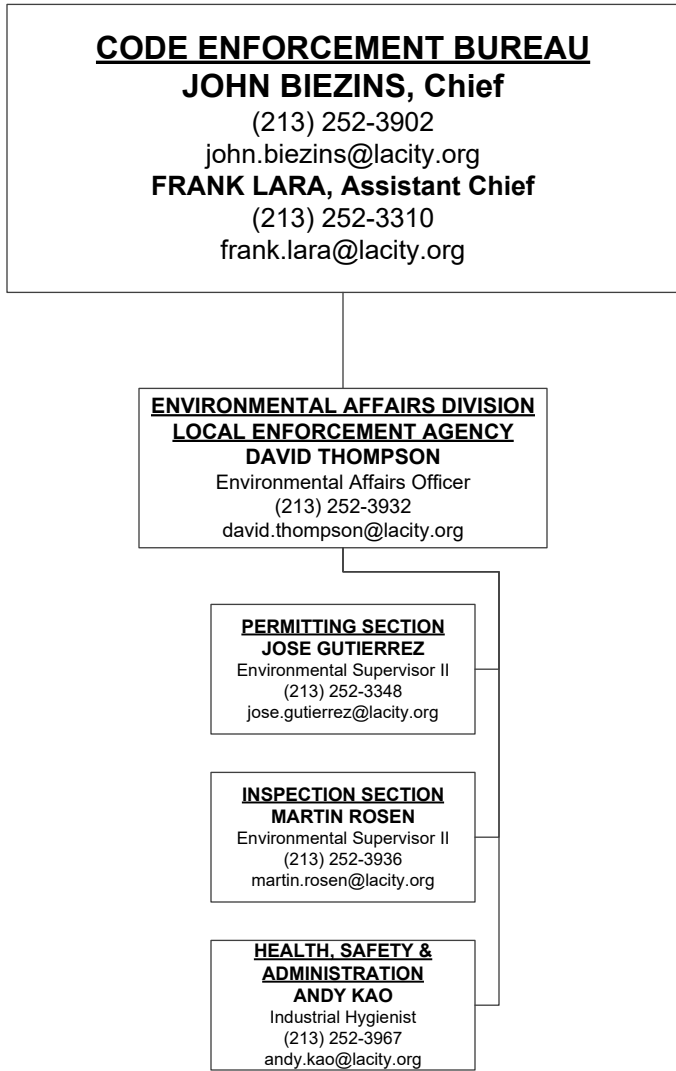
CD #12
ROBERT GOLD
Sr Build Mech Inspector
(818) 374-9853
robert.gold@lacity.org

LEGAL LIAISON
JASON SIBLEY
Sr Build Mech Inspector
(818) 374-9859
jason.sibley@lacity.org

PRO-ACTIVE CODE ENFORCEMENT 2
VACANT
Sr Build Mech Inspector
(213) 252-3352
@lacity.org

PRO-ACTIVE CODE ENFORCEMENT 3
JOE VELASQUEZ
Sr Build Inspector
(213) 252-3349
joe.velasquez@lacity.org

VACANT BUILDING ABATEMENT
MICHAEL SCHULZINGER
Sr Build Mech Inspector
(213) 252-3962
michael.schulzinger@lacity.org



RESOURCE MANAGEMENT BUREAU
ANA MAE YUTAN, Acting Chief
 (213) 482-6782
 anamae.yutan@lacity.org

VACANT, Assistant Chief
 Chief Mgmt Analyst
 (213) 482-6782
 @lacity.org

CYNTHIA KHO, Assistant Chief
 Dept Chief Accountant IV
 (213) 482-6815
 cynthia.kho@lacity.org

