

DETACHED CARPORT

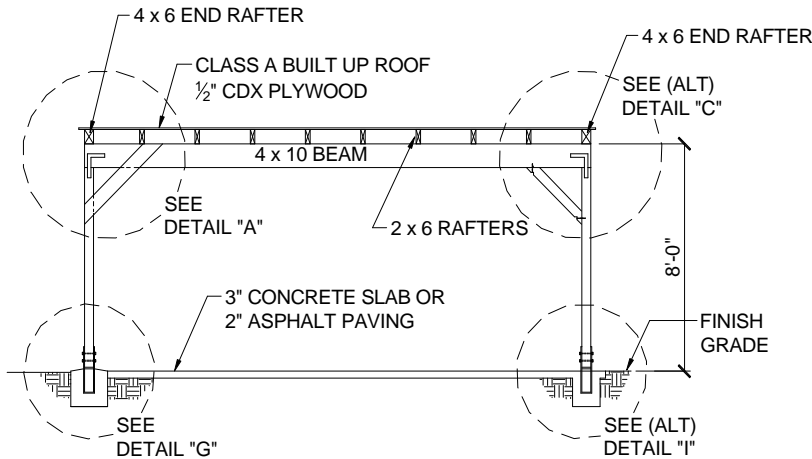
Minimum construction requirements
 when located outside of a fire district

NOTE:

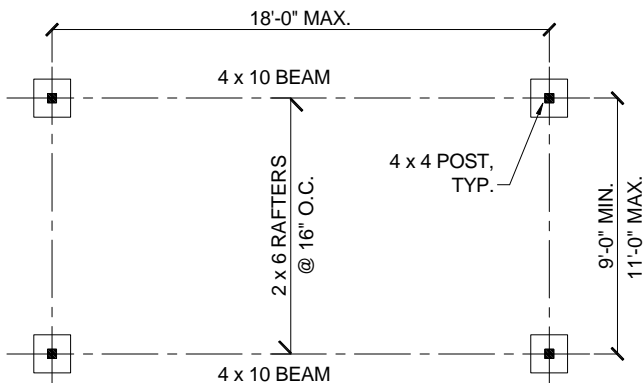
Refer to Type V sheet for specifications of concrete, lumber grade, and rafter spacing.

Provide plot plan showing the location of all existing buildings on lot with dimensions to lot lines and between buildings.

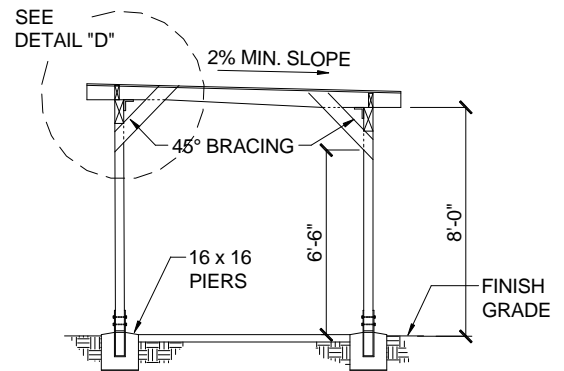
This structure is not permitted within 3' of a property line unless an exterior wall without openings is provided. This wall shall be protected on the exterior surface with material approved for 1-hr fire resistive construction.



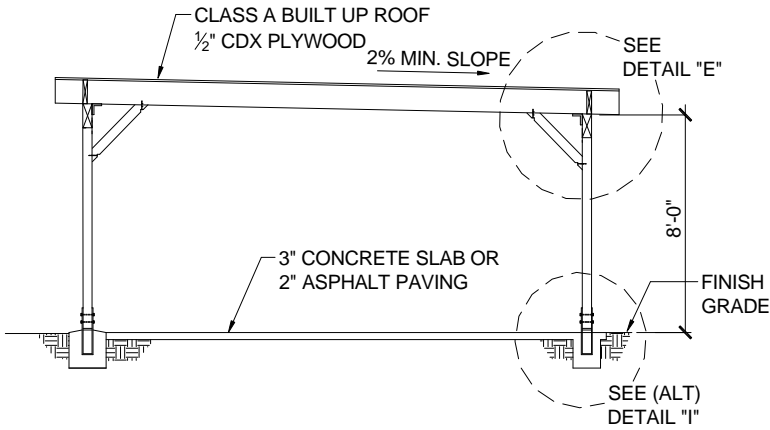
SIDE VIEW



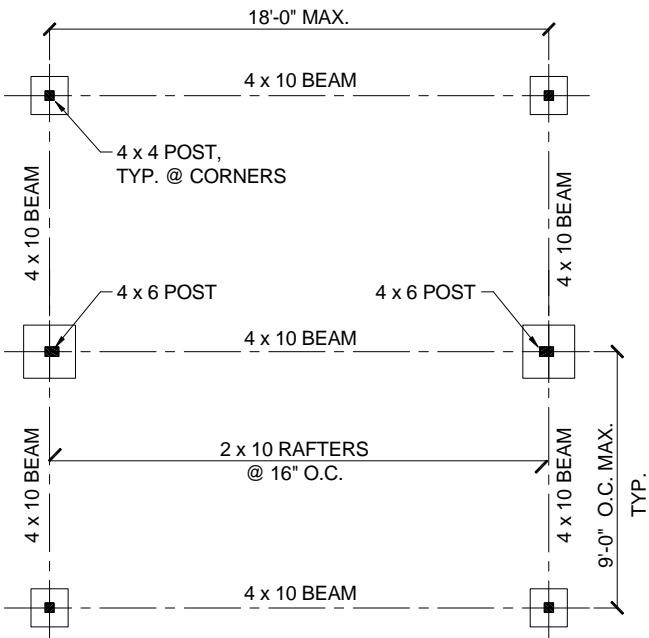
FOOTING PLAN
 (1-CAR CARPORT)



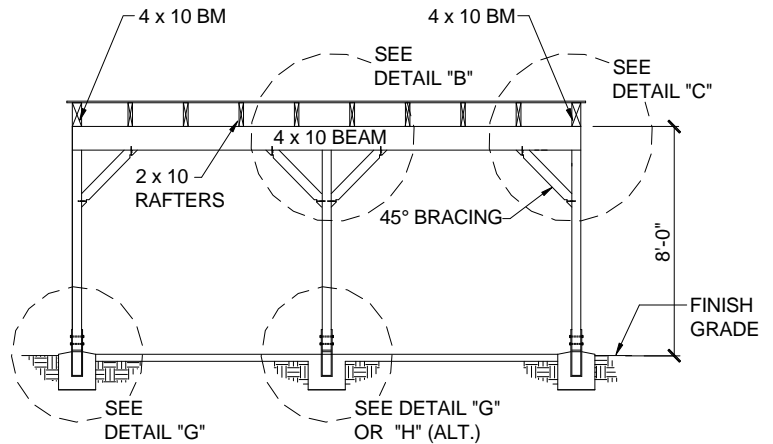
END VIEW



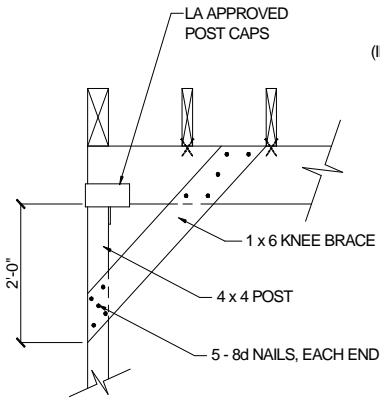
EXTERIOR SIDE VIEW



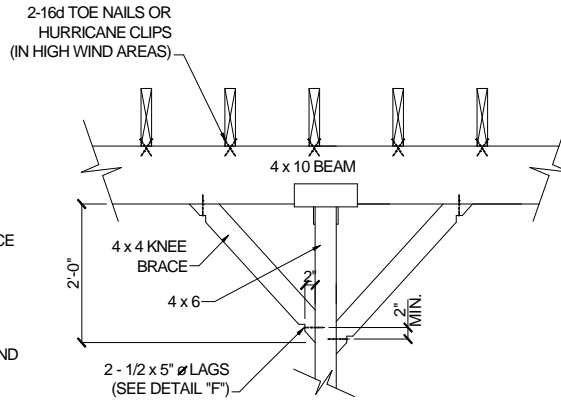
FOOTING PLAN
(2-CAR CARPORT)



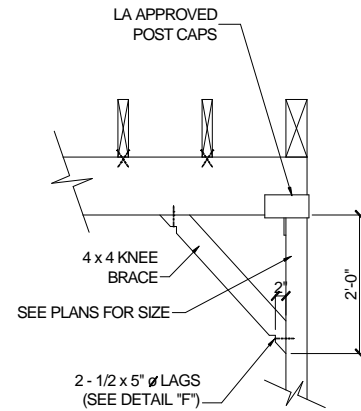
END VIEW



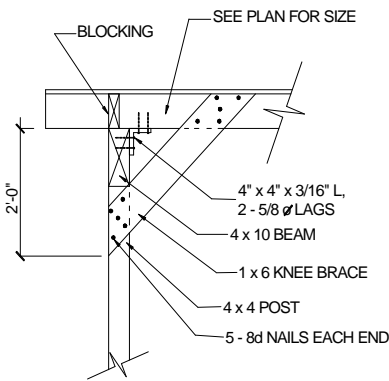
DETAIL "A"



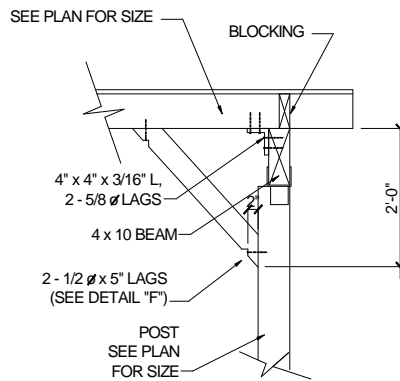
DETAIL "B"



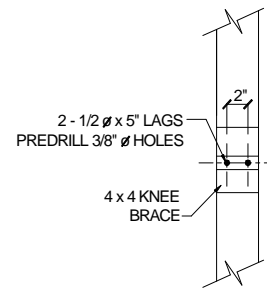
DETAIL "C"



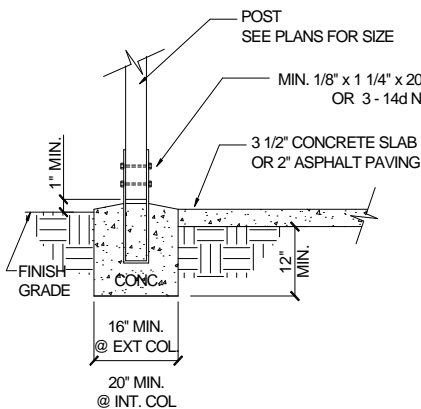
DETAIL "D"



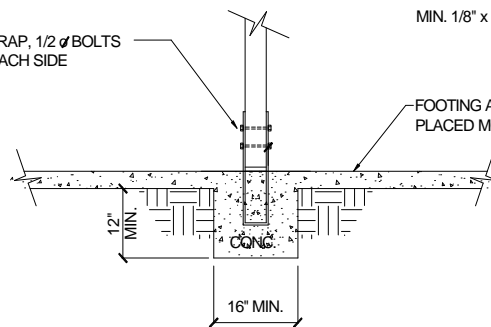
DETAIL "E"



DETAIL "F"

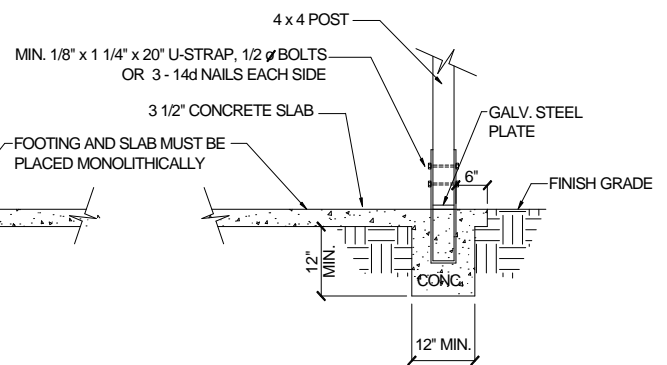


DETAIL "G"



DETAIL "H"

(ONLY ALTERNATIVE FOR HIGH WIND AREAS)



DETAIL "I"

(ONLY ALTERNATIVE FOR HIGH WIND AREAS)