



# **SUBMITTAL REQUIREMENTS FOR ONE-STORY ADDITION TO RESIDENTIAL BUILDINGS FOR OVER-THE-COUNTER PLAN CHECK**

## **REQUIRED:**

Fill out the building permit application 'B' and provide 2 sets of plans, drawn to scale, which includes the following:

### **1. Plot Plan**

- street(s).
- dimensions of property (lot size) and proposed addition.
- locations and uses of existing buildings and proposed addition.
- distances from proposed addition to existing buildings and property lines.

### **2. Floor Plan**

- dimensions of the new addition.
- dimensions of existing adjoining rooms and window sizes.
- locations and sizes of new windows, doors, and plumbing fixtures.

### **3. Framing Plan**

- types of material, locations, sizes, spans, and spacings of all new structural members (ridge, sheathing, roof, and ceilings joists, post, .. etc.).
- structural connections between addition and existing construction.

### **4. Foundation Plan**

- dimensions and width of new continuous footings.
- locations of new piers and crawl space openings.
- sizes, spans, and spacings of new sheathing, girders, and floor joists\* (\*for raised floors only).

### **5. Elevations**

- two exterior views of addition.
- roofing material specifications and pitch.
- locations of new windows, doors, and attic ventilation openings.

### **6. Construction Detail**

- ceiling height of addition.
- insulation materials for wall, floor, and attic.

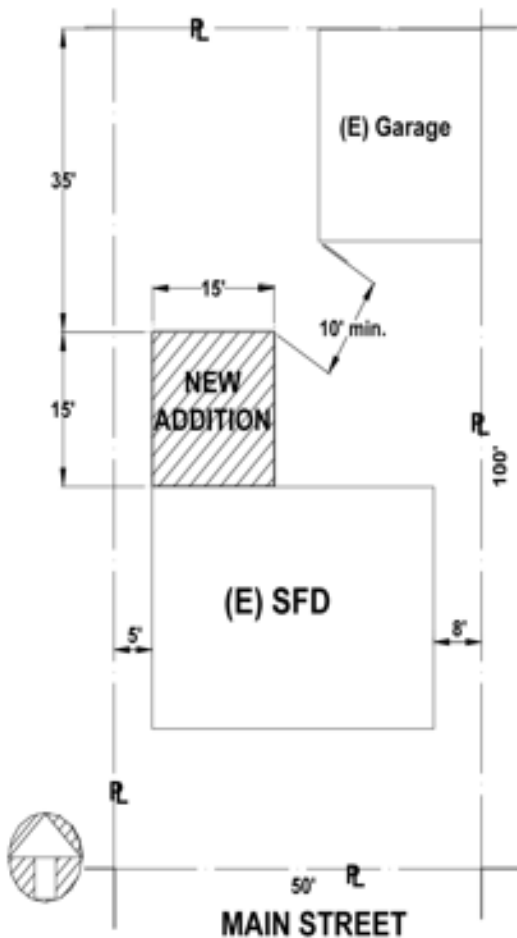
- interior and exterior finish.
- sizes, spans, and spacing of new structural members for roof, floor, and foundation assemblies.

**7. Energy Conservation**

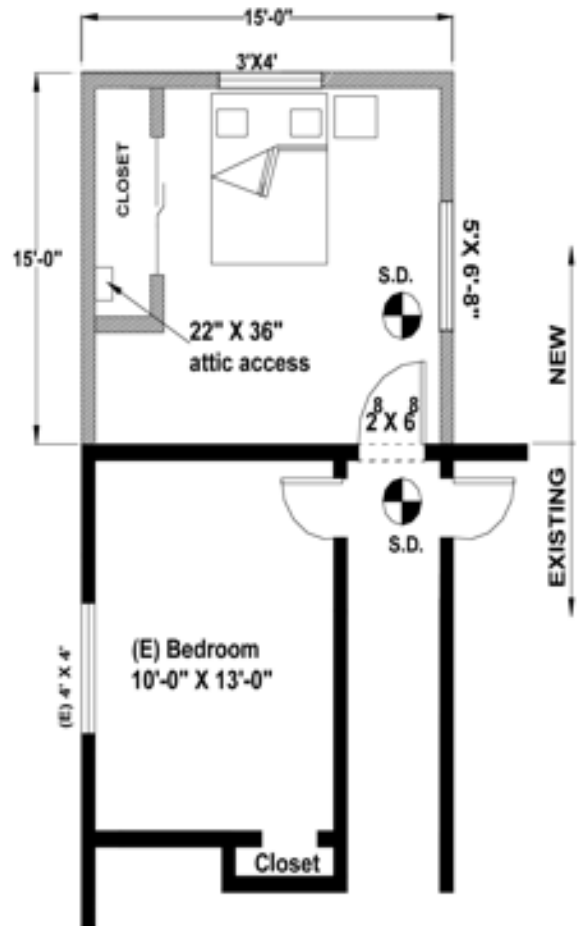
- size of water heater, AC unit/heater, CF-1R and MF-1R Energy Compliance Forms.

**8. Attach Information Bulletin P/BC 2023-004 (Wood Frame Prescriptive Provisions) To Plans.**

**EXAMPLE OF REQUIRED PLANS:**



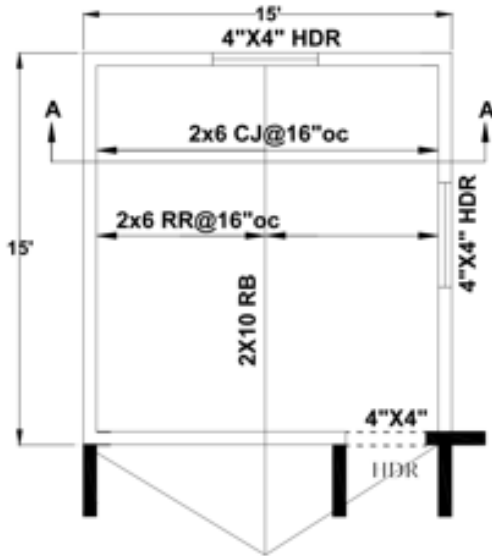
**Plot Plan**



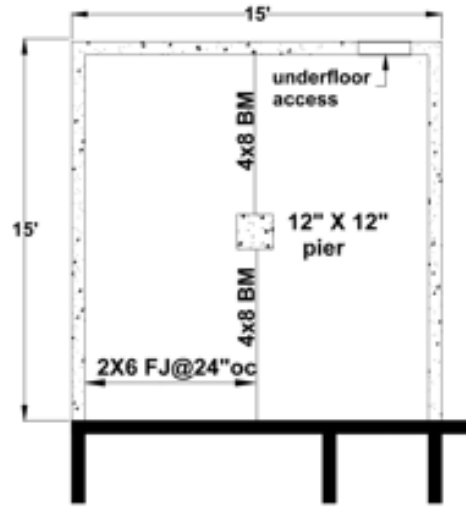
**Floor Plan**

 S.D. = SMOKE DETECTOR

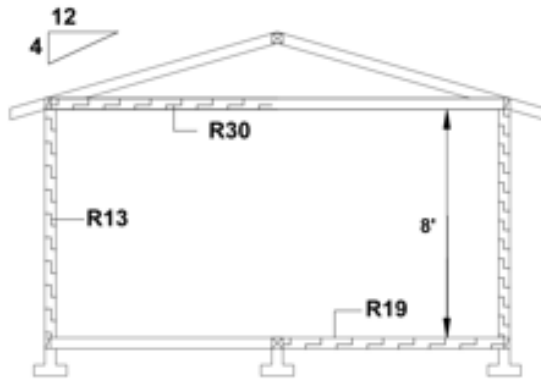
As a covered entity under Title II of the Americans with Disabilities Act, the City of Los Angeles does not discriminate on the basis of disability and, upon request, will provide reasonable accommodation to ensure equal access to its programs, services and activities. For efficient handling of information internally and in the internet, conversion to this new format of code related and administrative information bulletins including MGD and RGA that were previously issued will allow flexibility and timely distribution of information to the public.



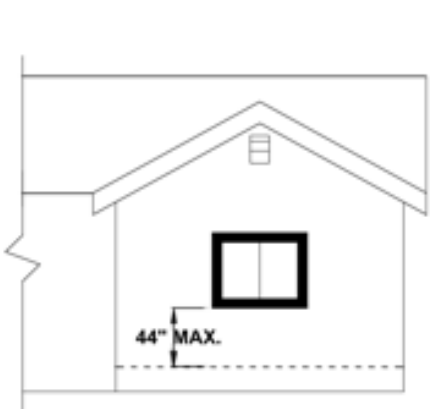
**Roof Framing**



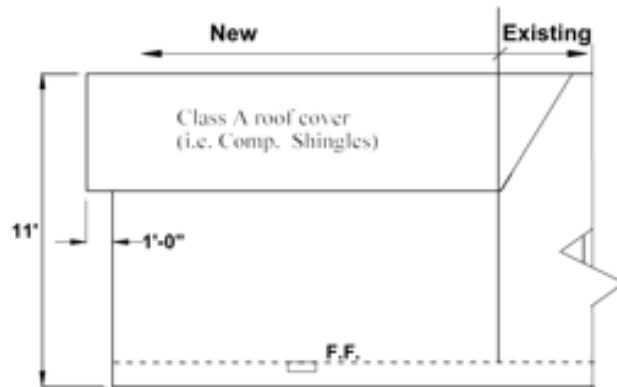
**Foundation/Floor Framing Plan**



**Section A-A**



**NORTH Elev.**



**WEST Elev.**

As a covered entity under Title II of the Americans with Disabilities Act, the City of Los Angeles does not discriminate on the basis of disability and, upon request, will provide reasonable accommodation to ensure equal access to its programs, services and activities. For efficient handling of information internally and in the internet, conversion to this new format of code related and administrative information bulletins including MGD and RGA that were previously issued will allow flexibility and timely distribution of information to the public.