



ORGANIZATIONAL CHART & TELEPHONE DIRECTORY

This directory is designed to:

1. Give users direct access to the Department's top-level management and supervisory personnel, and
2. To see where the managers and supervisors fit into the Department's chain-of-command structure.

FOR AUTOMATED INSPECTION REQUESTS ONLY,
YOU MAY CALL TOLL FREE FROM ANYWHERE
IN LOS ANGELES COUNTY:

1-888-524-2845

OR

OUTSIDE LOS ANGELES COUNTY

213-482-0000

TDD Line 888-833-8389

FOR ALL OTHER SERVICES OR INFORMATION WITHIN
THE CITY OF LOS ANGELES

3-1-1

OR

OUTSIDE LOS ANGELES CITY

1-213-473-3231

For more information regarding the Los Angeles Department of Building and Safety, please visit www.ladbs.org.

TELEPHONE DIRECTORY INDEX

DEPARTMENT OF BUILDING AND SAFETY

Executive and Bureau Management	Chart 1
Government and Community Relations Division.....	Chart 2
Development Services Case Management Division	
Case Management.....	Chart 3
Preliminary Review.....	Chart 3
Building Research	Chart 3
Personnel Services.....	Chart 4

PERMIT AND ENGINEERING BUREAU

Permit and Engineering Bureau Management	Chart 5
Structural Plan Check Division	
Metro and ePlan Check	Chart 6
Van Nuys District Office	Chart 6
West LA District Office	Chart 6
High-Rise, Seismic Retrofit and LAX Projects Division	
Soft-Story Retrofit Program	Chart 7
High-Rise and Non-Ductile Concrete Buildings	Chart 7
LAX	Chart 7
Structural Plan Check Counter Division	
Metro Plan Check	Chart 8
South LA District Office	Chart 8
Van Nuys District Office	Chart 8
West LA District Office	Chart 8
San Pedro District Office	Chart 8
Concierge Services	Chart 8
Green/Electrical/Mechanical (GEM) Plan Check Division	
Green Building Plan Check / Inspection.....	Chart 9
Mechanical Plan Check and Test Lab	Chart 9
Electrical Plan Check and Test Lab	Chart 9

INSPECTION BUREAU

Commercial Building Inspection	Chart 10
Elevator and Pressure Vessel.....	Chart 10
Commercial Inspection	Chart 11
Plumbing, Heating and Fire Sprinkler / Electrical	
Residential Inspection.....	Chart 12
Metro / Van Nuys / West LA / San Pedro	
Grading Engineering and Inspection.....	Chart 12
Training and Emergency Management Division	Chart 12

CODE ENFORCEMENT BUREAU

Citywide Signs Code Enforcement	Chart 13
General Enforcement and Annual Inspection Monitoring.....	Chart 13
Citywide Pro-Active Code Enforcement.....	Chart 13
Citywide Vacant Building Abatement and Foreclosure Registry Program	Chart 13
Environmental Affairs Division, Local Enforcement Agency.....	Chart 14

RESOURCE MANAGEMENT BUREAU

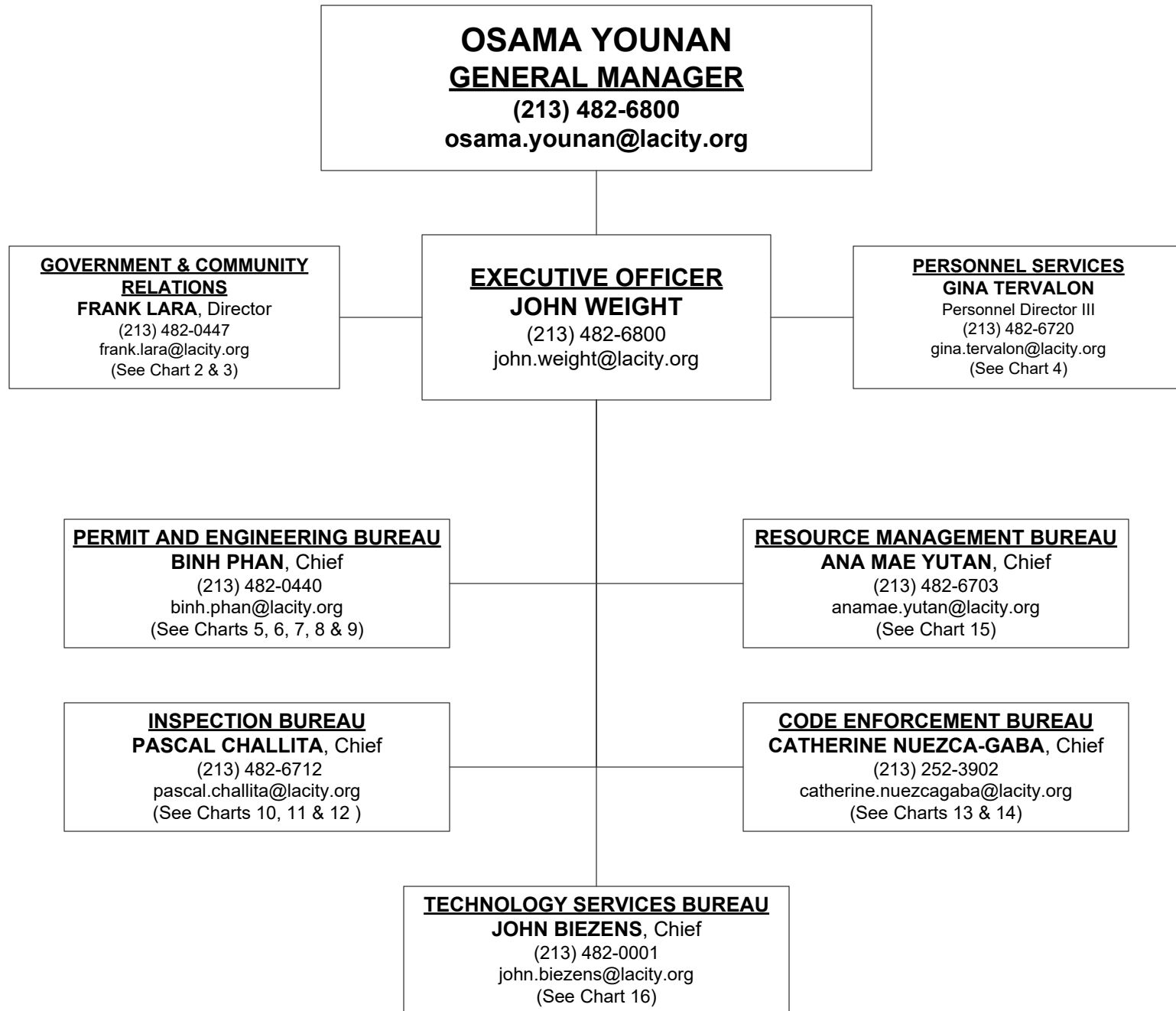
Administrative Services Division	Chart 15
Financial Services Division	Chart 15
Risk and Records Management Division	Chart 15

TECHNOLOGY SERVICES BUREAU

Customer Engagement Division	Chart 16
Application Services Division.....	Chart 16
Operations and Infrastructure Division.....	Chart 16
Administration Division	Chart 16

DEPARTMENT OF BUILDING AND SAFETY

Chart 1



GOVERNMENT & COMMUNITY RELATIONS
DIVISION
FRANK LARA, Director
(213) 482-0447
frank.lara@lacity.org

CAROLYNN JUACALLA
Struc Engr Assc III
(213) 482-0096
carolynn.nepomuceno@lacity.org

CELESTE NGUYEN
Struc Engr Assc II
(213) 482-6855
celeste.nguyen@lacity.org

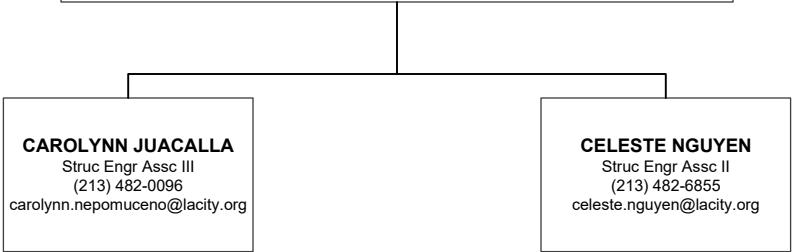
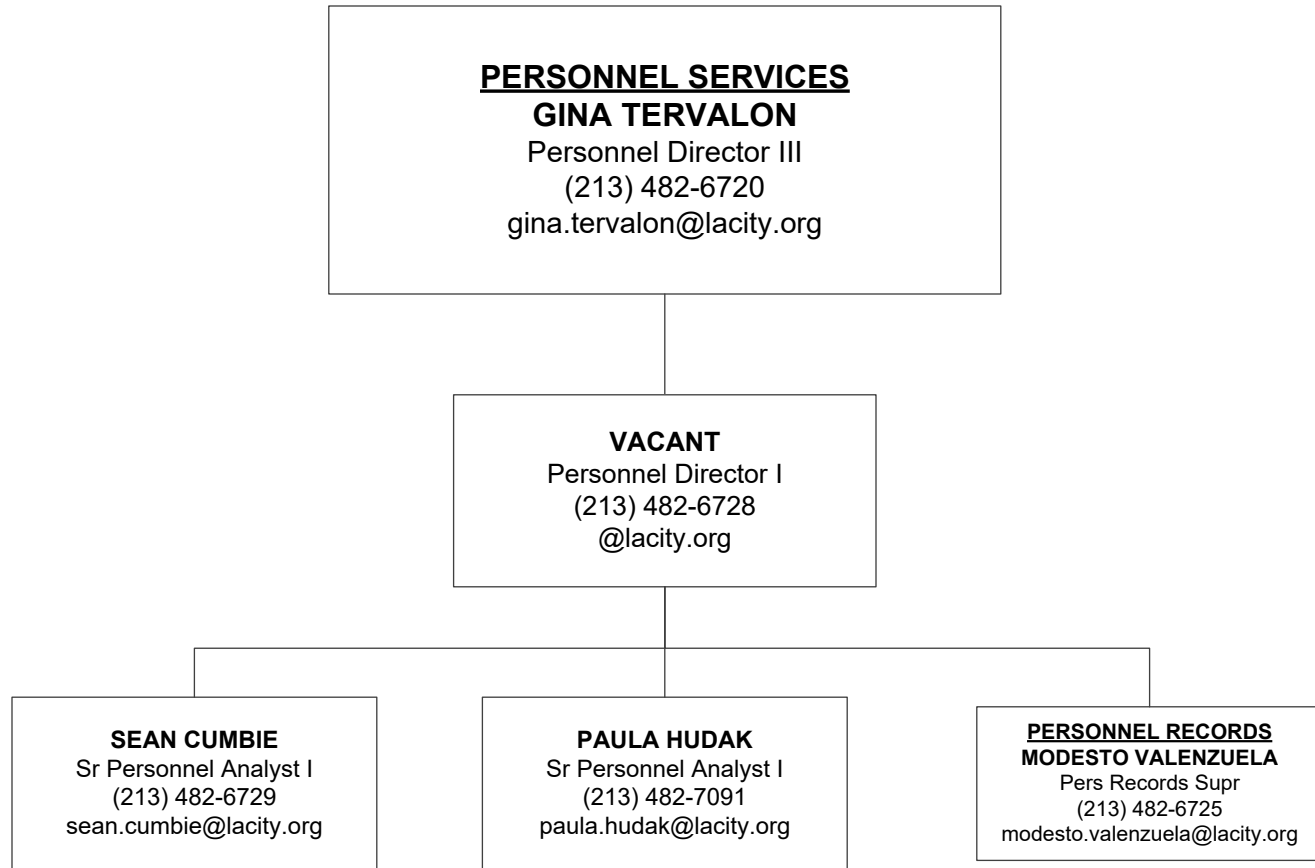


Chart 3



Chart 4



PERMIT AND ENGINEERING BUREAU
BINH PHAN, Chief
(213) 482-0440
binh.phan@lacity.org

**GREEN/ELECTRICAL/
MECHANICAL DIVISION**
ADEL SALAH EDDINE, Chief
Asst Dep Sup of Bldg II
(213) 482-0053
adel.salah-eddine@lacity.org
See Chart 9

**STRUCTURAL PLAN CHECK
DIVISION**
VACANT, Chief
Asst Dep Sup of Bldg II
(213) 482-0440
@lacity.org
See Chart 6

**HIGH-RISE, SEISMIC
RETROFIT AND LAX
PROJECTS DIVISION**
CHARMIE HUYNH, Chief
Asst Dep Sup of Bldg II
(213) 482-0440
charmie.hyunh@lacity.org
See Chart 7

**STRUCTURAL PLAN CHECK
COUNTER DIVISION**
SHAHEN AKELYAN, Chief
Asst Dep Sup of Bldg II
(213) 482-0440
shahen.akelyan@lacity.org
See Chart 8

Chart 6

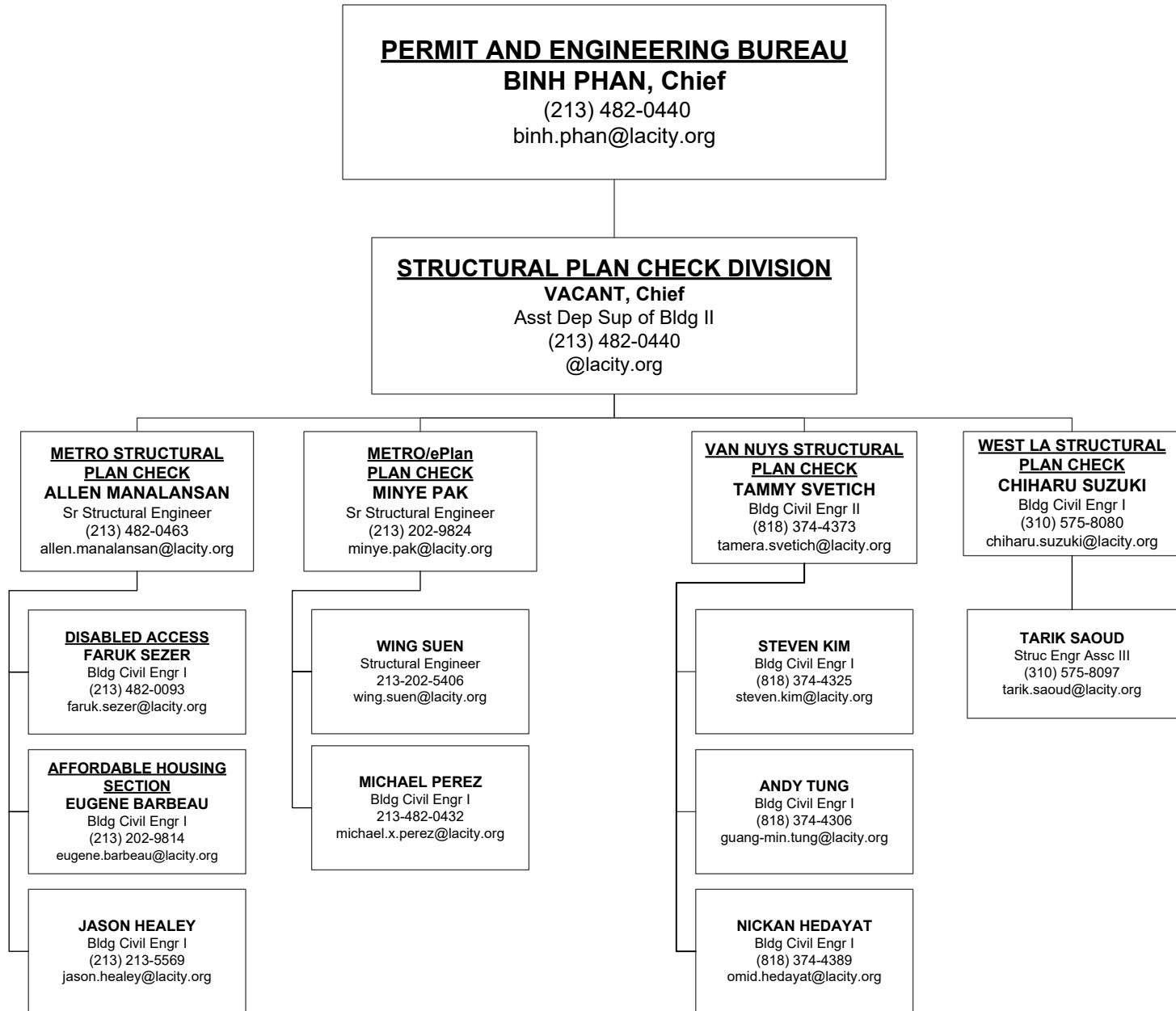
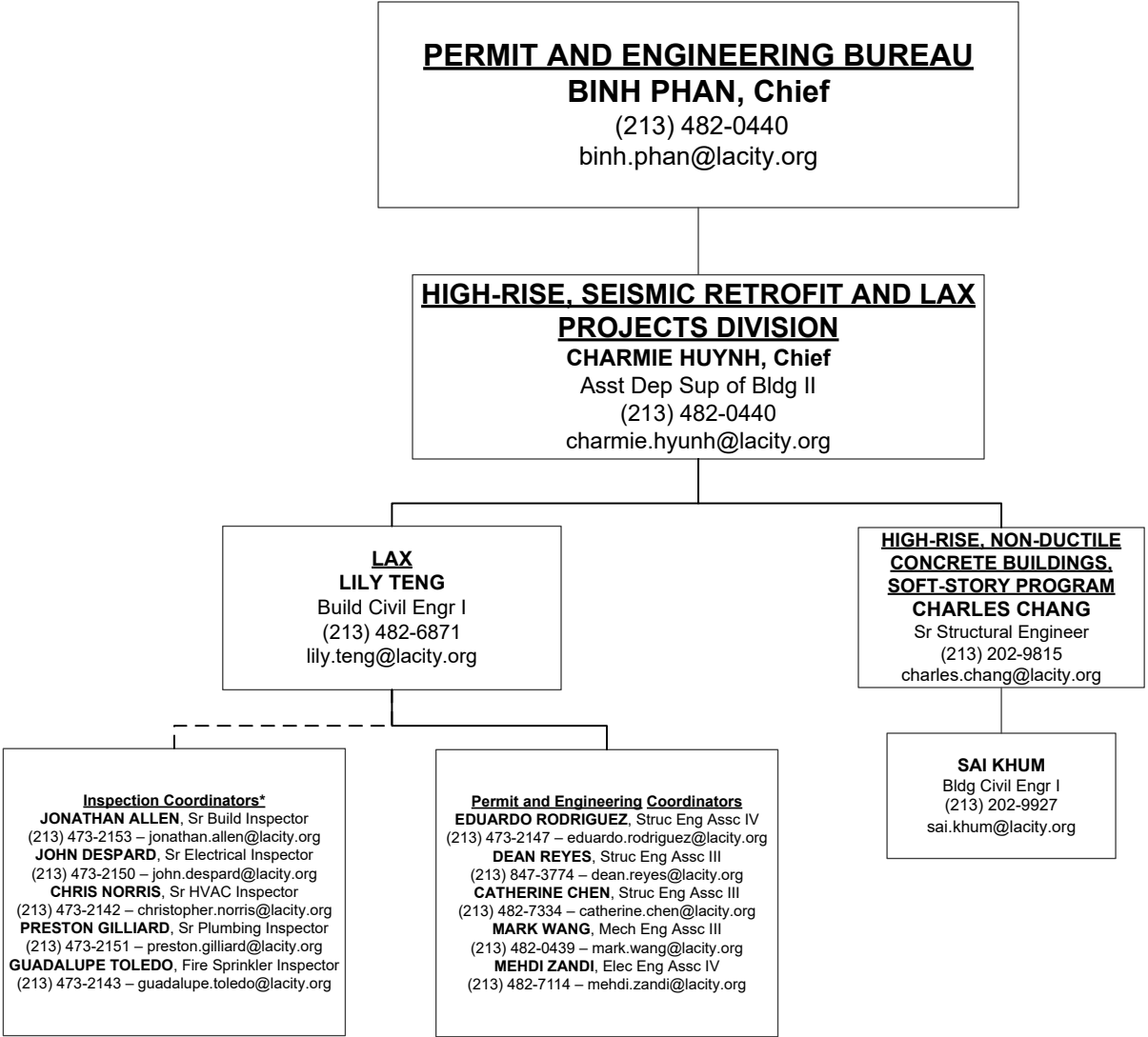
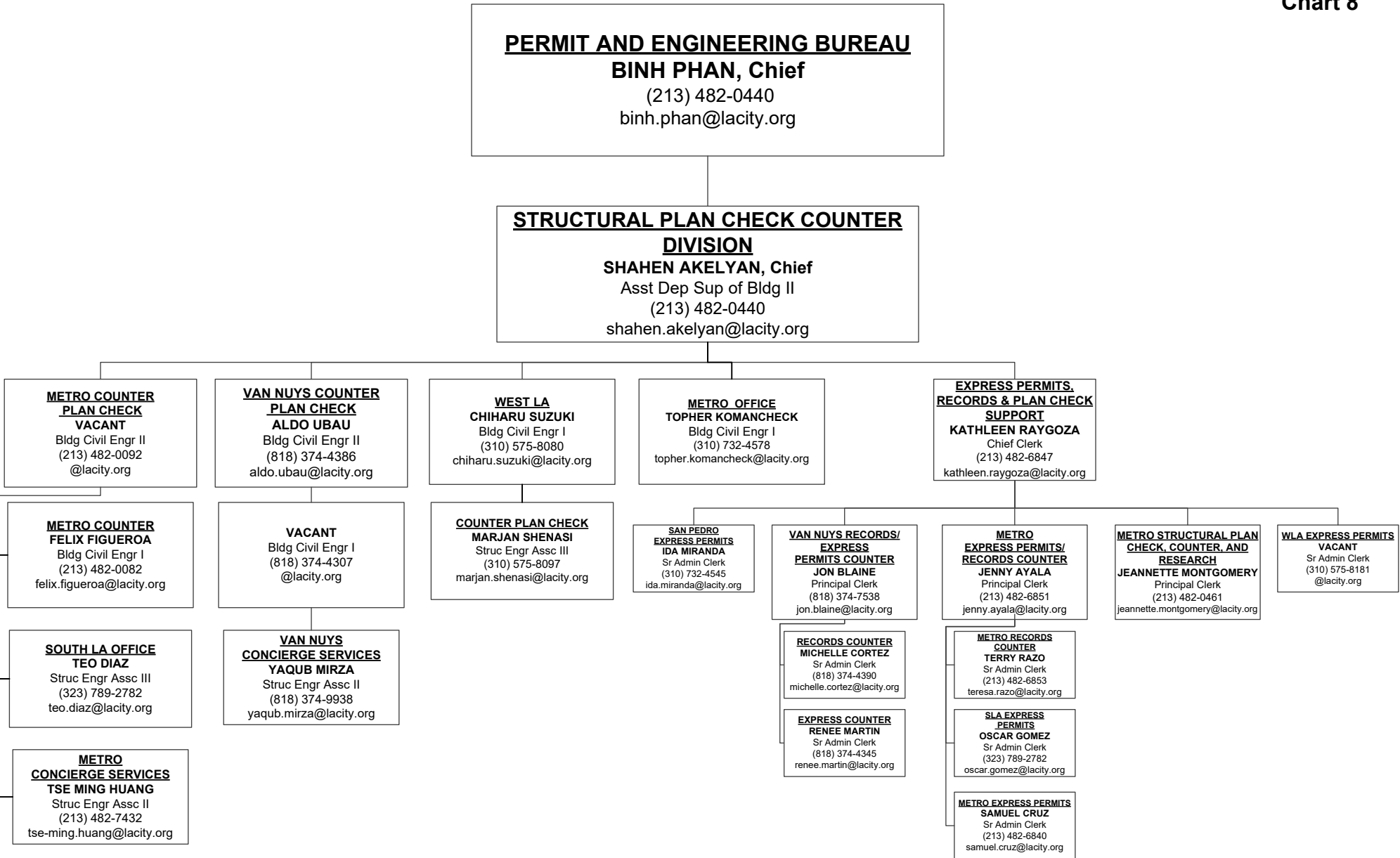


Chart 7



*Reporting to Inspection Bureau



PERMIT AND ENGINEERING BUREAU
BINH PHAN, Chief
 (213) 482-0440
 binh.phan@lacity.org

GREEN, ELECTRICAL & MECHANICAL DIVISION
ADEL SALAH EDDINE, Chief
 Asst Dep Sup of Bldg II
 (213) 482-0053
 adel.salah-eddine@lacity.org

GREEN BUILDING
VACANT
 Bldg Civil Engr II
 (213) 202-3450
 @lacity.org

VAN NUYS
MICHAEL SCOTT AYERS
 Struc Engr Assc IV
 (818) 374-4308
 michael.scott.ayers@lacity.org

WEST LA
RICHARD GARCIA
 Struc Engr Assc II
 (310) 575-8095
 richard.garcia@lacity.org

METRO PLAN CHECK
NEGAR NEJAD
 Struc Engr Assc II
 (213) 482-0436
 negar.nejad@lacity.org

MECHANICAL PLAN CHECK
VACANT
 Bldg Mech Engr II
 (213) 482-0410
 @lacity.org

MIKE SHAHRESTANI
 Mech Engr Assc IV
 (213) 482-6940
 mike.shahrestani@lacity.org

VAN NUYS MECHANICAL
PLAN CHECK & COUNTER
MANUEL HERNANDEZ
 Mech Engr Assc III
 (818) 374-4372
 manuel.hernandez@lacity.org

METRO MECHANICAL PLAN
CHECK COUNTER
GREG ARBUCKLE
 Mech Engr Assc III
 (213) 202-2791
 gregory.arbuckle@lacity.org

METRO MECHANICAL
PLAN CHECK (LAX)
MARK WANG
 Mech Engr Assc III
 (213) 482-0439
 mark.wang@lacity.org

MECHANICAL TEST LAB
IRENE POOL TAMAYO
 Mech Engr Assc III
 (213) 482-0065
 irene.pool.tamayo@lacity.org

METRO MECHANICAL
PLAN CHECK
RAWAND ARYAN
 Mech Engr Assc III
 (213) 482-0406
 rawand.aryan@lacity.org

ELECTRICAL PLAN CHECK
NABIL MAALOUF
 Bldg Elec Engr II
 (213) 482-0052
 nabil.maalouf@lacity.org

METRO ELECTRICAL
PLAN CHECK
FRANCIS YSAGUIRRE
 Elec Engr Assc IV
 (213) 482-0064
 francis.ysaguirre@lacity.org

VAN NUYS ELECTRICAL
PLAN CHECK & COUNTER
ERIC GOSS
 Elec Engr Assc III
 (818) 374-4343
 eric.goss@lacity.org

METRO ELECTRICAL
PC CNTR/TESTLAB/EBEWE/
LAX
NABIL MAALOUF
 Bldg Elec Engr II
 (213) 482-0052
 nabil.maalouf@lacity.org

ELECTRICAL TEST LAB
BEHROOZ HOORIANI
 Elec Engr Assc IV
 (213) 482-0045
 behrooz.hooriani@lacity.org

METRO ELECTRICAL
PLAN CHECK COUNTER
FRANCIS YSAGUIRRE
 Elec Engr Assc IV
 (213) 482-0064
 francis.ysaguirre@lacity.org

METRO ELECTRICAL
PLAN CHECK (LAX)
MEHDI ZANDI
 Elec Engr Assc IV
 (213) 482-7114
 mehdi.zandi@lacity.org

INSPECTION BUREAU
PASCAL CHALLITA, Chief
(213) 482-6712
pascal.challita@lacity.org
DENVER (SHAWN) HARGIS, Assistant Chief
(213) 482-0342
denver.hargis@lacity.org

**BUILDING INSPECTION/INSPECTION
CASE MANAGEMENT (ICM)/
RESTAURANT & SMALL BUSINESS
EXPRESS PROGRAM (RSBEP)**
JAMES GARRISON
Chief Inspector
(213) 482-0492
jim.garrison@lacity.org

**ELEVATOR/PRESSURE
VESSEL INSPECTION**
VACANT
Chief Inspector
(213) 202-3467
@lacity.org

MATERIALS CONTROL
ADAM BURGESS
Principal Inspector
(213) 202-9856
adam.burgess@lacity.org

METRO
TERRY HERR
Principal Inspector
(213) 202-9863
terry.herr@lacity.org

ELEVATOR INSPECTION
LARRY ISIDRO
Principal Inspector
(213) 202-9830
larry.isidro@lacity.org

**SPECIAL EVENTS/TENT
INSPECTIONS**
FELIX CEBALLOS
Build Inspector
(213) 482-7359
felix.cebillos@lacity.org

SOFT STORY INSPECTION
DAVID TSAU
Sr Build Inspector
(213) 482-0309
david.tsau@lacity.org

**ELEVATOR INSPECTION
METRO**
DAVID JENNINGS
Sr Safety Eng Elev
(213) 202-9832
david.jennings@lacity.org

**PRESSURE VESSEL
INSPECTION CODE DESK
METRO**
CIRILO REYES
Sr Safety Eng Press Ves
(213) 202-9852
cirilo.reyes@lacity.org

**CERTIFIED LICENSED
CONTRACTOR (CLC)/
CERTIFIED WELDERS**
DANIEL VARNUM
Build Inspector
(213) 202-9861
daniel.varnum@lacity.org

VAN NUYS
RICKEY JACKSON
Principal Inspector
(818) 374-1104
rickey.jackson@lacity.org

**ELEVATOR INSPECTION
VN**
JIMMIE GRABATIN
Sr Safety Eng Elev
(818) 374-1139
jim.grabatin@lacity.org

**PRESSURE VESSEL
INSPECTION CODE DESK VN**
RENATO FABIAN
Sr Safety Eng Press Ves
(818) 374-1149
renato.fabian@lacity.org

TRADE LICENSING SECTION
CRYSTAL HERNANDEZ
Sr Admin. Clerk
(213) 482-0315
crystal.hernandez@lacity.org

WEST LA
HENRY BAGHDASSARIAN
Principal Inspector
(310) 914-3905
henry.baghdassarian@lacity.org

**ELEVATOR INSPECTION
WLA**
RICHARD OKE
Sr Safety Eng Elev
(310) 914-3967
richard.oke@lacity.org

**PRESSURE VESSEL
INSPECTION CODE DESK WLA**
JUAN CARLOS CHAVEZ
Sr Safety Eng Press Ves
(310) 914-3973
juancarlos.chavez@lacity.org

SAN PEDRO
NICK LAROCCA
Sr Build Inspector
(310) 732-4552
nick.larocca@lacity.org

**ELEVATOR CODE
INFORMATION &
APPOINTMENTS**
(213) 202-9844
Fax (213) 202-9922

LAX
JONATHAN ALLEN
Sr Build Inspector
(213) 473-2153
jonathan.allen@lacity.org

RSBEP/ICM ADMIN SUPPORT
VACANT
Administrative Clerk
@lacity.org

INSPECTION BUREAU
PASCAL CHALLITA, Chief
 (213) 482-6712
 pascal.challita@lacity.org
DENVER (SHAWN) HARGIS, Assistant Chief
 (213) 482-0342
 denver.hargis@lacity.org

**PLUMBING/HEATING AND
 FIRE SPRINKLER INSPECTION**
STEVE KIMBLE
 Chief Inspector
 (213) 482-6787
 steven.kimble@lacity.org

ELECTRICAL INSPECTION
VACANT
 Chief Inspector
 (213) 202-9906
 @lacity.org

**PLUMBING/HEATING/FIRE
 SPRINKLER INSPECTION**
TIM GRIFFITH
 Principal Inspector
 (213) 482-0354
 tim.griffith@lacity.org

**PLUMBING/HEATING/FIRE
 SPRINKLER INSPECTION**
VACANT
 Principal Inspector
 (213) 202-9885
 @lacity.org

ELECTRICAL INSPECTION
WILLIAM MITCHELL
 Principal Inspector
 (213) 482-0377
 william.mitchell@lacity.org

ELECTRICAL INSPECTION
YERVAND CHAPANYAN
 Principal Inspector
 (213) 482-0302
 yervand.chapanyan@lacity.org

METRO
DEXTER JACKSON, Sr Plumbing
 (213) 482-0061 – dexter.jackson@lacity.org
KEVIN SIMONDS, Sr Fire Sprinkler
 (213) 482-7207 – kevin.simonds@lacity.org
VICENTE VARGAS, Sr HVAC
 (213) 202-5614 – vicente.vargas@lacity.org

VAN NUYS
CORNELL EWELL, Sr Plumbing
 (818) 374-1154 – cornell.ewell@lacity.org
JOSEPH TAYLOR, Sr Fire Sprinkler
 (818) 374-9935 – joseph.taylor@lacity.org
KEVIN BROWN, Sr HVAC
 (818) 374-1153 – kevin.brown@lacity.org

METRO
JOHNNY YUTRONICH
 Sr Electrical Inspector
 (213) 202-3176
 johnny.yutronich@lacity.org

VAN NUYS
DOUG VERRAL
 Sr Electrical Inspector
 (818) 374-1136
 douglas.verral@lacity.org

WEST LA
MICHAEL LUNG, Sr Plumbing
 (310) 914-3949 – michael.lung@lacity.org
JOHN BARTON, Sr Fire Sprinkler
 (310) 914-3955 – john.barton@lacity.org
KEVIN KIDD, Sr HVAC
 (310) 914-3961 – kevin.kidd@lacity.org

SAN PEDRO
MICHAEL LUNG
 Plumbing Inspector
 (310) 914-3949
 michael.lung@lacity.org

WEST LA
MIKE TILK
 Sr Electrical Inspector
 (310) 914-3942
 michael.tilk@lacity.org

SAN PEDRO
WON LEE
 Sr Electrical Inspector
 (310) 732-4549
 won.lee@lacity.org

LAX
GUADALUPE TOLEDO, Fire Sprinkler
 (213) 473-2143 – guadalupe.toledo@lacity.org
PRESTON GILLIARD, Sr Plumbing
 (213) 473-2151 – preston.gilliard@lacity.org
CHRIS NORRIS, Sr HVAC
 (213) 473-2142 – christopher.norris@lacity.org

ELECTRICAL CODE INFORMATION
RICK HORN
 Sr Electrical Inspector
 (213) 482-0057
 richard.horn@lacity.org

LAX
JOHN DESPARD
 Sr Electrical Inspector
 (310) 473-2150
 john.despard@lacity.org

PLUMBING CODE INFORMATION
 (213) 482-0061
 Fax (213) 482-7410

INSPECTION BUREAU
PASCAL CHALLITA, Chief
 (213) 482-6712
 pascal.challita@lacity.org
VICTOR CUEVAS, Assistant Chief
 (213) 202-9869
 victor.cuevas@lacity.org

RESIDENTIAL INSPECTION
RONALD (DEVIN) MYRICK
 Chief Inspector
 (213) 202-3469
 ronald.myrick@lacity.org

GRADING
J. ADOLFO ACOSTA
 Geotechnical Engineer III
 (213) 482-6967 Direct
 (213) 482-0480 General
 jesus.acosta@lacity.org

TRAINING AND EMERGENCY MANAGEMENT
LISA YANCEY
 Chief Inspector
 (213) 482-7097
 lisa.yancey@lacity.org

METRO
D. BRIAN HAUFF
 Principal Inspector
 (213) 482-0323
 derold.hauff@lacity.org

VAN NUYS
MICHAEL SMITH
 Principal Inspector
 (818) 374-1155
 michael.smith@lacity.org

WLA/San Pedro
VACANT
 Principal Inspector
 (310) 914-3904
 @lacity.org

GRADING INSPECTION
SERGIO VALENZUELA
 Principal Inspector
 (213) 482-0397
 sergio.valenzuela@lacity.org

GEOTECHNICAL ENGINEERING
YING LIU
 Geotechnical Engineer II
 (213) 482-0494
 ying.liu@lacity.org

TRAINING

EMERG MGMT

CD #10 & #13
RUBEN SALAS
 Sr Build Mech Inspector
 (213) 482-6962
 ruben.salas@lacity.org

CD #12
 19040 Vanowen St.
JOHN JANSON
 Sr Build Mech Inspector
 (818) 774-4335
 john.janson@lacity.org

CD #5A
 11620 Wilshire Blvd. #1100
MATT KELLERMAN
 Sr Build Mech Inspector
 (310) 914-3908
 matt.kellerman@lacity.org

METRO
PATRICK MISCHLICH
 Sr Build Inspector
 (213) 482-0396
 pat.mischlich@lacity.org

GRADING PLAN CHECK
DAN RYAN EVANGELISTA
 Struc Engr Assc III
 (213) 482-6810
 dan.evangelista@lacity.org

ELECTRICAL
VACANT
 Sr Electrical Inspector
 (213) 482-6797
 @lacity.org

JEANEAN BARAJAS
 Emergency Management Coordinator
 (213) 482-7370
 jeanean.barajas@lacity.org

VACANT
 (818) 374-1159
 Sr Build Mech Inspector
 @lacity.org

CD #7
 6262 Van Nuys Blvd
MICHAEL TEMPLE
 Sr Build Mech Inspector
 (818) 374-1158
 michael.temple@lacity.org

CD #11
 11620 Wilshire Blvd. #1100
DANIEL ORRANTE
 Sr Build Mech Inspector
 (310) 914-3906
 daniel.orrante@lacity.org

VAN NUYS INSPECTION
VACANT
 Sr Build Inspector
 (818) 374-4350
 @lacity.org

ENGINEERING GEOLOGY
DANIEL SCHNEIDERREIT
 Engineering Geologist II
 (213) 482-0430
 daniel.schneiderreit@lacity.org

HVAC
ARA HAGHAZARIAN
 Build Mech Inspector
 (213) 482-6795
 ara.haghnazarian@lacity.org

ED GARCIA
 Sr Build Mech Inspector
 (213) 482-6786
 edward.garcia@lacity.org

CD #5C
 221 N. Figueroa, 8th Fl.
BRAD BESCOS
 Sr Build Mech Inspector
 (213) 202-3431
 brad.bescos@lacity.org

CD #5B
 6262 Van Nuys Blvd.
VACANT
 Sr Build Mech Inspector
 (818) 374-1157
 @lacity.org

CD #5D
 11620 Wilshire Blvd. #1100
KENNETH NAGLE
 Sr Build Mech Inspector
 (310) 914-3907
 kenneth.nagle@lacity.org

WEST LA INSPECTION
VACANT
 Sr Build Inspector
 (310) 914-3900
 @lacity.org

BUILDING
JASON SUMMERS
 Sr Build Inspector
 (213) 482-0386
 jason.summers@lacity.org

METRO/VN/WLA/SP INVESTIGATIONS
RICK RODRIGUEZ
 Sr Build Inspector
 (213) 482-0345
 rick.rodriguez@lacity.org

CD #1 & #14
 221 N. Figueroa, 8th Fl.
VACANT
 Sr Build Mech Inspector
 (213) 202-3445
 @lacity.org

TRACTS
 19040 Vanowen St
VACANT
 Sr Build Mech Inspector
 (818) 774-4334
 @lacity.org

CD #6
 11620 Wilshire Blvd. #1100
VACANT
 Sr Build Mech Inspector
 (310) 914-3909
 @lacity.org

SAN PEDRO INSPECTION
VACANT
 Sr Building Inspector
 (310) 548-2552
 @lacity.org

PLUMBING
ARMANDO PULIDO
 Sr Plumbing Inspector
 (213) 482-0346
 armando.pulido@lacity.org

HIGH RISE RETROFIT/ EQ INSPECTION
RICK RODRIGUEZ
 Sr Build Inspector
 (213) 482-0345
 rick.rodriguez@lacity.org

CD #8 & #9
 221 N. Figueroa, 8th Fl.
HAL FULTZ
 Sr Build Mech Inspector
 (213) 202-3211
 hal.fultz@lacity.org

METRO TRACTS
VACANT
 Sr Build Mech Inspector
 (213) 202-3122
 @lacity.org

CD #2
 6262 Van Nuys Blvd
DAVE MATSON
 Sr Build Mech Inspector
 (818) 374-1159
 dave.matson@lacity.org

RESIDENTIAL/ZONING
ELMER "BOB" BLAND
 Sr. Build Mech Inspector
 (213) 482-7278
 elmer.bland@lacity.org

INVESTIGATIONS
LINN MELVIN
 Build Mech Inspector
 (213) 482-0371
 trey.melvin@lacity.org

DONALD CRICHLAW
 (213) 202-3211
 Sr Build Mech Inspector
 donald.crichlow@lacity.org

CD #15
 638 S. Beacon St.
CRAIG DAVIS
 Sr Build Mech Inspector
 (310) 732-4558
 craig.davis@lacity.org

CD #3
 19040 Vanowen St.
ROBERT GOLD
 Sr Build Mech Inspector
 (818) 774-4354
 robert.gold@lacity.org

TRAINING COORDINATOR
FRED EALEY
 Management Analyst
 (213) 482-7293
 fred.ealey@lacity.org

CODE ENFORCEMENT BUREAU
CATHERINE NUEZCA-GABA, Chief

(213) 252-3931

catherine.nuezcagaba@lacity.org

ERIC JAKEMAN, Assistant Chief

(213) 252-3976

eric.jakeman@lacity.org

FAITH MAULUPE
 Principal Clerk
 (213) 252-3376
 faith.maulupe@lacity.org

GENERAL ENFORCEMENT & SPECIALTY/SIGNS INSPECTION

JEFF NAPIER

Chief Inspector/Public Information Officer

(213) 263-6846

jeff.napier@lacity.org

GENERAL ENFORCEMENT, ANNUAL INSPECTION MONITORING, PROACTIVE CODE ENFORCEMENT, & VACANT BUILDING ABATEMENT

JACK CONGER

Chief Inspector

(213) 252-3310

jack.conger@lacity.org

CITYWIDE SIGNS
DANIEL SANCHEZ
 Principal Inspector
 (213) 252-3926
 daniel.sanchez@lacity.org

CENTRAL REGION GENERAL ENFORCEMENT
DANIEL SANCHEZ
 Principal Inspector
 (213) 252-3926
 daniel.sanchez@lacity.org

SOUTH REGION GENERAL ENFORCEMENT
BRUCE TODD
 Principal Inspector
 (213) 978-4502
 bruce.todd@lacity.org

CITYWIDE ANNUAL INSPECTION MONITORING
VACANT
 Principal Inspector
 (818) 374-9806
 @lacity.org

NORTH REGION GENERAL ENFORCEMENT
VACANT
 Principal Inspector
 (818) 374-9806
 @lacity.org

CITYWIDE PACE 2 & 3
ARMOND GREGORYONA
 Principal Inspector
 (213) 252-3082
 armond.gregoryona@lacity.org

CITYWIDE VBA & FORECLOSURE REGISTRY PROGRAM
ARMOND GREGORYONA
 Principal Inspector
 (213) 252-3082
 armond.gregoryona@lacity.org

SIGN ENFORCEMENT
SHAWN ESHBACH
 Sr Build Mech Inspector
 (213) 252-3909
 shawn.eshbach@lacity.org

CD #1
AUGUSTUS ALBAS
 Sr Build Mech Inspector
 (213) 252-3038
 augustus.albas@lacity.org

CD #8
DANIEL GONZALEZ
 Sr Build Mech Inspector
 (213) 978-4504
 daniel.a.gonzalez@lacity.org

NORTH REGION
WILLIE ROSS
 Sr Build Mech Inspector
 (818) 374-9837
 willie.ross@lacity.org

CD #2
DAVID HICKMAN
 Sr Build Mech Inspector
 (818) 230-0288
 david.hickman@lacity.org

PRO-ACTIVE CODE ENFORCEMENT 2
BRYAN EPSTEIN
 Sr Build Mech Inspector
 (213) 252-3352
 bryan.epstein@lacity.org

VACANT BUILDING ABATEMENT
MICHAEL SCHULZINGER
 Sr Build Mech Inspector
 (213) 252-3962
 michael.schulzinger@lacity.org

NEW CONSTRUCTION
SHAWN ESHBACH
 Sr Build Mech Inspector
 (213) 252-3909
 shawn.eshbach@lacity.org

CD #4
JOEL WILLIAMS
 Sr Build Mech Inspector
 (213) 482-0469
 joel.n.williams@lacity.org

CD #9
SAM PORTILLO
 Sr Build Mech Inspector
 (213) 978-4495
 sam.portillo@lacity.org

METRO REGION
CHRISTOPHER LEKO
 Sr Build Inspector
 (213) 252-3041
 christopher.leko@lacity.org

CD #3
ROBERT SUNSERI
 Sr Build Mech Inspector
 (818) 374-9857
 robert.sunseri@lacity.org

PRO-ACTIVE CODE ENFORCEMENT 3
RICK CARPENTER
 Sr Build Mech Inspector
 (213) 252-3349
 ulric.carpenter@lacity.org

OFF-SITE SIGNS PERIODIC INSPECTION PROGRAM
SHAWN ESHBACH
 Sr Build Mech Inspector
 (213) 252-3909
 shawn.eshbach@lacity.org

CD #5
ROBERT MINASSIANS
 Sr Build Mech Inspector
 (213) 252-3049
 robert.minassians@lacity.org

CD #10
JOHN JAEGER
 Sr Build Mech Inspector
 (213) 252-3964
 john.jaegers@lacity.org

CD #6
DAVID JAMES
 Sr Build Mech Inspector
 (818) 374-9858
 dave.james@lacity.org

CD #7
MARK BEVELAQUA
 Sr Build Inspector
 (213) 978-8820
 mark.bevelaqua@lacity.org

CD #13
PIERRE VEGA
 Sr Build Mech Inspector
 (213) 252-3977
 pierre.vega@lacity.org

CD #11
JOHN MATTILLO
 Sr Build Mech Inspector
 (213) 978-4498
 john.mattillo@lacity.org

CD #12
VACANT
 Sr Build Mech Inspector
 (818) 374-9853
 @lacity.org

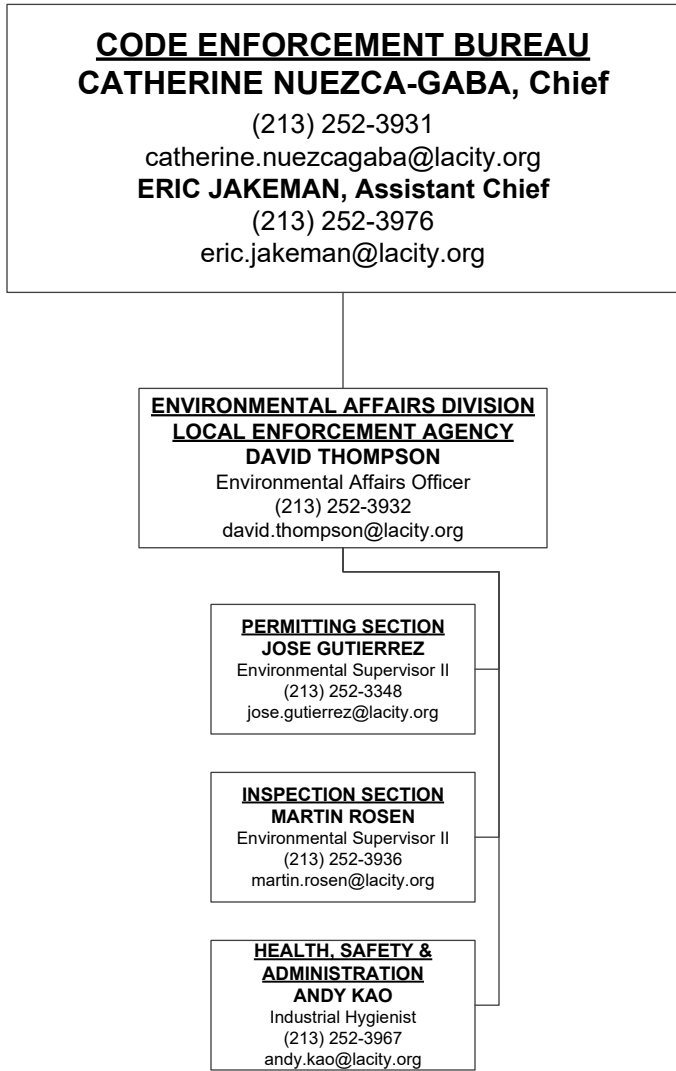
CD #14
MARK VAN SLOOTEN
 Sr Build Mech Inspector
 (323) 526-9348
 mark.vanslooten@lacity.org

CD #15
PAUL BECKER
 Sr Build Mech Inspector
 (310) 732-4530
 paul.becker@lacity.org

LEGAL LIAISON
VACANT
 (818) 374-9859
 @lacity.org

LEGAL LIAISON
MARK RUDE
 Sr Build Mech Inspector
 (213) 252-3393
 mark.rude@lacity.org

LEGAL LIAISON
CLAUDIO MORENO
 Sr Build Mech Inspector
 (213) 978-4503
 claudio.moreno@lacity.org



RESOURCE MANAGEMENT BUREAU
ANA MAE YUTAN, Chief
 (213) 482-6703
 anamae.yutan@lacity.org

VERONICA E. SALUMBIDES,
Assistant Chief
 Chief Mgmt Analyst
 (213) 482-6782
 veronica.salumbides@lacity.org

VACANT, Assistant Chief
 Dept Chief Accountant IV
 (213) 482-6815
 @lacity.org

ADMINISTRATIVE SERVICES DIVISION

RISK & RECORDS MANAGEMENT DIVISION

FINANCIAL SERVICES DIVISION

ZACHARY DE CORSE
 Sr Mgmt Analyst II
 (213) 482-6746
 zachary.decorse@lacity.org

TONY PELAEZ
 Sr Mgmt Analyst II
 (213) 482-6766
 tony.pelaez@lacity.org

CHRISTINE ISIDRO
 Principal Accountant I
 (213) 482-6892
 christine.isidro@lacity.org

CASHIERING SERVICES
VICTORIA VASQUEZ
 Chief Cashier
 (213) 482-6953
 mariavictoria.vasquez@lacity.org

FACILITIES MANAGEMENT, COMM SERVICES, AND FORMS CONTROL
SOMAPUN PONGQUAN
 Sr Mgmt Analyst I
 (213) 482-6748
 somapun.pongquan@lacity.org

CUSTODIAN OF RECORDS
MICHAEL BOUVET
 Management Analyst
 (213) 482-6704
 michael.bouvet@lacity.org

ACCOUNTS PAYABLE
EMILY HU
 Sr Accountant I
 (213) 482-6534
 emily.hu@lacity.org

PO PROCESSING AND PURCHASING ISSUES
RYAN SOLIS
 Management Analyst
 (213) 482-7318
 ryan.solis@lacity.org

DATA AND RECORDS MANAGEMENT
CHAUNTEL MARTIN
 Chief Clerk
 (213) 482-6560
 chauntel.martin@lacity.org

SUPPLIES
JOHN BOROUGH
 Store Keeper II
 (213) 482-6813
 john.borough@lacity.org

LIENS
CHARLES KALIBBALA
 Sr Accountant I
 (213) 202-9829
 charles.kalibbala@lacity.org

CONTRACTS AND GRANTS ADMINISTRATOR, NEWSLETTERS
CHRISTINE WAI
 Sr Mgmt Analyst I
 (213) 482-6740
 christine.wai@lacity.org

IDIS & SUBJECT SPECIALTY CALL GROUP
VACANT
 Principal Clerk
 @lacity.org

PAYROLL AND FUND ADMIN
EMMA PANGILINAN
 Sr Accountant I
 (213) 482-7347
 emma.pangilinan@lacity.org

S1B PROCESSING AND MAJOR TENANT IMPROVEMENTS
PATRICK EVERDING
 Management Analyst
 (213) 482-6741
 patrick.everding@lacity.org

SUBJECT SPECIALTY CALL GROUP
LORENA ESPINOZA
 Sr Admin Clerk
 (213) 482-6549
 lorena.espinoza@lacity.org

ADMINISTRATIVE SERVICES DIVISION MAIN LINE
 (213) 482-6776
 LADBS.ASD@lacity.org

RESIDENTIAL PROPERTY REPORTS
SUNEETA ATYAM
 Sr Admin Clerk
 (213) 482-6772
 suneeta.atyam@lacity.org

TECHNOLOGY SERVICES BUREAU
JOHN BIEZENS, Chief
(213) 482-0001
john.biezens@lacity.org
GREG WILCOX, Director of Systems
(213) 482-0031
greg.wilcox@lacity.org

ADMINISTRATIVE DIVISION
CINDY OHARA
Systems Programmer II
(213) 482-0002
cindy.ohara@lacity.org

CUSTOMER ENGAGEMENT DIVISION
MINH ONG
Build Civil Engr I
(213) 482-0029
minh.ong@lacity.org

APPLICATION SERVICES DIVISION
JEANNE LY
Systems Programmer III
(213) 482-0046
jeanne.ly@lacity.org

OPERATIONS AND INFRASTRUCTURE DIVISION
KENNETH SMITH
Sr Sys Analyst II
(213) 202-3101
kenneth.smith@lacity.org

APPLICATION DEVELOPMENT DIVISION
SHANNON HAAS
Sr Sys Analyst II
(213) 482-0050
shannon.haas@lacity.org

BUSINESS ANALYSIS SERVICES
REBECCA ARIOSIA
Sr Sys Analyst I
(213) 482-0041
rebecca.ariosa@lacity.org

SUBJECT MATTER EXPERT SERVICES
VACANT
(213) 482-0031
@lacity.org

WEBSITE SUPPORT
VACANT
(213) 482-0031
@lacity.org

DATA AND SYSTEM SUPPORT
VACANT
Database Architect
(213) 482-0051
@lacity.org

DATA AND SYSTEMS SUPPORT
TUNG PHAN
Database Architect
(213) 482-0031
tung.phan@lacity.org

PERMITTING SYSTEM
WEI BIN HE
Programmer Analyst V
(213) 482-0037
wei.he@lacity.org

INFRASTRUCTURE AND DEVOPS SUPPORT
LING KE
Systems Programmer III
(213) 482-0026
ling.ke@lacity.org

NETWORK AND SECURITY SUPPORT
KEN LAM
Systems Programmer III
(213) 202-9962
ken.lam@lacity.org

OPERATIONS
VACANT
Sr Sys Analyst I
(213) 482-0031
@lacity.org