



ORGANIZATIONAL CHART & TELEPHONE DIRECTORY

This directory is designed to:

1. Give users direct access to the Department's top-level management and supervisory personnel, and
2. To see where the managers and supervisors fit into the Department's chain-of-command structure.

FOR AUTOMATED INSPECTION REQUESTS ONLY,
YOU MAY CALL TOLL FREE FROM ANYWHERE
IN LOS ANGELES COUNTY:

1-888-524-2845

OR

OUTSIDE LOS ANGELES COUNTY

213-482-0000

TDD Line 888-833-8389

FOR ALL OTHER SERVICES OR INFORMATION WITHIN
THE CITY OF LOS ANGELES

3-1-1

OR

OUTSIDE LOS ANGELES CITY

1-213-473-3231

For more information regarding the Los Angeles Department of Building and Safety, please visit www.ladbs.org.



**LADBS ADMINISTRATIVE/HEADQUARTER OFFICES
201 NORTH FIGUEROA STREET, SUITE 1000
LOS ANGELES, CALIFORNIA 90012**

PERMIT/DEVELOPMENT SERVICES OFFICES

INSPECTION OFFICES

CODE ENFORCEMENT OFFICES

- **DEVELOPMENT SERVICES CASE MANAGEMENT DIVISION**
201 N. Figueroa Street, Suite 1030
Los Angeles, CA 90012
- **METRO DEVELOPMENT SERVICES CENTER**
201 N. Figueroa Street, 4th Floor Los Angeles, CA 90012
Permit and Engineering Bureau Administration – 10th Floor
Records Research and Express Permits – 1st Floor
Counter Plan Check – 4th Floor (Electrical and Mechanical)
Electrical and Mechanical Engineering – 5th Floor
Green Buildings – 5th Floor
Disabled Access Appeals – 8th Floor
Structural Engineering Research – 8th Floor
Board of Building and Safety Commission Office – 10th Floor
Structural Plan Check – 8th Floor
- **VAN NUYS DEVELOPMENT SERVICES CENTER**
6262 Van Nuys Boulevard, 2nd Floor, Room 251
Van Nuys, CA 91401
- **WEST LOS ANGELES DEVELOPMENT SERVICES CENTER**
1828 Sawtelle Boulevard, 2nd Floor
Los Angeles, CA 90025
- **SAN PEDRO DEVELOPMENT SERVICES CENTER**
638 S. Beacon Street, 2nd Floor, San Pedro, CA 90731
- **SOUTH LOS ANGELES DEVELOPMENT SERVICES CENTER**
1968 W. Adams Blvd.
Los Angeles, CA 90018
- **TEST LAB**
Electrical Testing Lab
201 N. Figueroa Street, Suite 500, Los Angeles, CA 90012

Mechanical Testing Lab
201 N. Figueroa Street, Suite 500, Los Angeles, CA 90012

- **INSPECTION BUREAU**
221 N. Figueroa Street, 7th, 8th and 12th Floors
Los Angeles, CA 90012
Bureau Management – 8th Floor
Commercial Inspection, Building Insp. Division - 7th Floor
(Electrical, HVAC, Plumbing, Fire Sprinkler & Mechanical)
Materials Control – 7th Floor
Special Events – 7th Floor
Investigations/Earthquake Safety/Hi-Rise Retrofit – 7th Floor
Certified Licensing Contractor – 7th Floor
Trade Licensing – 7th Floor
Residential Inspection – 8th Floor
Elevator and Pressure Vessels – 8th Floor
Inspection Case Management – 8th Floor
Restaurant and Small Business Express Program (RSBEP)
– 8th Floor
Inspections and Investigations – 8th Floor
Training and Emergency Management Division – 8th Floor
Grading and Engineering Inspection – 12th Floor
- **VAN NUYS INSPECTION DIVISION**
6262 Van Nuys Boulevard, Ste. 200
Van Nuys, CA 91401

19040 Vanowen Street
Reseda, CA 91335
Residential Inspection
- **WEST LOS ANGELES INSPECTION DIVISION**
11620 Wilshire Boulevard, Suite 1100
Los Angeles, CA 90025
- **SAN PEDRO COMMERCIAL & RESIDENTIAL INSPECTION DIVISIONS**
638 S. Beacon Street, 2nd Floor
San Pedro, CA 90731

- **CODE ENFORCEMENT BUREAU**
221 N. Figueroa Street, 11th and 12th Floors
Los Angeles, CA 90012

CENTRAL REGION
Centralized Specialty Division – 11th Floor
Administration and Liens – 11th Floor
Pro Active Code Enforcement – 11th Floor
Vacant Building Abatement – 11th Floor
Signs-Enforcement & New – 11th Floor
Off-Site Signs Program – 11th Floor
General Code Enforcement – 11th Floor
Annual Inspection Monitoring – 11th Floor
Local Enforcement Agency – 12th Floor

2130 E. 1st Street – 4th Floor, Suite 2101
Los Angeles, CA 90033

CEIS Development Team
201 N. Figueroa Street, 9th Floor
Los Angeles, CA 90012
- **NORTH REGION**
Van Nuys City Hall
14410 Sylvan Street, Suite 105
Los Angeles, CA 91401
- **SOUTH REGION**
1968 W. Adams Boulevard, Suite G-16
Los Angeles, CA 90018

4301 S. Central Avenue
Los Angeles, CA 90011

221 N Figueroa Street, 11th Floor
Los Angeles, CA 90012

7166 Manchester Avenue, Suite 10A
Los Angeles, CA 90045

638 Beacon Street, Suite 276
San Pedro, CA 90731

TELEPHONE DIRECTORY INDEX

DEPARTMENT OF BUILDING AND SAFETY

Executive and Bureau Management	Chart 1
Government and Community Relations Division.....	Chart 2
Personnel Services.....	Chart 3

PERMIT AND ENGINEERING BUREAU

Permit and Engineering Bureau Management	Chart 4
Development Services Case Management Division	
Case Management.....	Chart 5
Preliminary Review.....	Chart 5
LAX	Chart 5
Structural Plan Check Division	
Metro and ePlan Check	Chart 6
Van Nuys District Office	Chart 6
West LA District Office	Chart 6
High-Rise and Seismic Retrofit Division	
Soft-Story Retrofit Program	Chart 7
High-Rise and Non-Ductile Concrete Buildings.....	Chart 7
Building Research	Chart 7
Structural Plan Check Counter Division	
Metro Plan Check	Chart 8
South LA District Office	Chart 8
Van Nuys District Office	Chart 8
West LA District Office	Chart 8
San Pedro District Office.....	Chart 8
Concierge Services	Chart 8
Green/Electrical/Mechanical (GEM) Plan Check Division	
Green Building Plan Check / Inspection	Chart 9
Mechanical Plan Check and Test Lab.....	Chart 9
Electrical Plan Check and Test Lab	Chart 9

INSPECTION BUREAU

Commercial Building Inspection	Chart 10
Elevator and Pressure Vessel.....	Chart 10
Commercial Inspection	Chart 11
Plumbing, Heating and Fire Sprinkler / Electrical	
Residential Inspection.....	Chart 12
Metro / Van Nuys / West LA / San Pedro	
Grading Engineering and Inspection.....	Chart 12
Training and Emergency Management Division	Chart 12

CODE ENFORCEMENT BUREAU

Citywide Signs Code Enforcement	Chart 13
General Enforcement and Annual Inspection Monitoring.....	Chart 13
Citywide Pro-Active Code Enforcement.....	Chart 13
Citywide Vacant Building Abatement and Foreclosure Registry Program.....	Chart 13
Environmental Affairs Division, Local Enforcement Agency.....	Chart 14

RESOURCE MANAGEMENT BUREAU

Administrative Services Division	Chart 15
Financial Services Division	Chart 15
Risk and Records Management Division	Chart 15

TECHNOLOGY SERVICES BUREAU

Customer Engagement Division	Chart 16
Application Services Division	Chart 16
Operations and Infrastructure Division.....	Chart 16
Administration Division	Chart 16

DEPARTMENT OF BUILDING AND SAFETY

Chart 1

OSAMA YOUNAN
GENERAL MANAGER
(213) 482-6800
osama.younan@lacity.org

**GOVERNMENT & COMMUNITY
RELATIONS**

CHARMIE HUYNH, Director
(213) 482-0440
charmie.huynh@lacity.org
(See Chart 2)

EXECUTIVE OFFICER

JOHN WEIGHT
(213) 482-6800
john.weight@lacity.org

PERSONNEL SERVICES

GINA TERVALON
Personnel Director III
(213) 482-6720
gina.tervalon@lacity.org
(See Chart 3)

PERMIT AND ENGINEERING BUREAU

CATHERINE NUEZCA-GABA, Chief
(213) 482-0440
catherine.nuezcagaba@lacity.org
(See Charts 4, 5, 6, 7, 8 & 9)

RESOURCE MANAGEMENT BUREAU

ANA MAE YUTAN, Chief
(213) 482-6703
anamae.yutan@lacity.org
(See Chart 15)

INSPECTION BUREAU

PASCAL CHALLITA, Chief
(213) 482-6712
pascal.challita@lacity.org
(See Charts 10, 11 & 12)

CODE ENFORCEMENT BUREAU

JOHN BIEZINS, Chief
(213) 252-3902
john.biezins@lacity.org
(See Charts 13 & 14)

TECHNOLOGY SERVICES BUREAU

JENNIFER BANOS, Chief
(213) 482-0001
jennifer.banos@lacity.org
(See Chart 16)

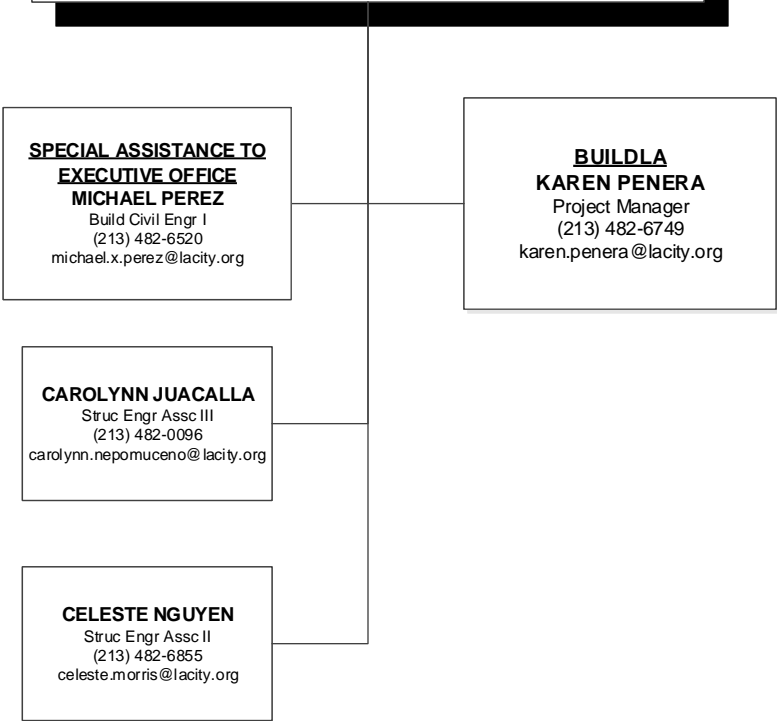
**GOVERNMENT & COMMUNITY RELATIONS
DIVISION**
CHARMIE HUYNH, Director
(213) 482-0440
charmie.huynh@lacity.org

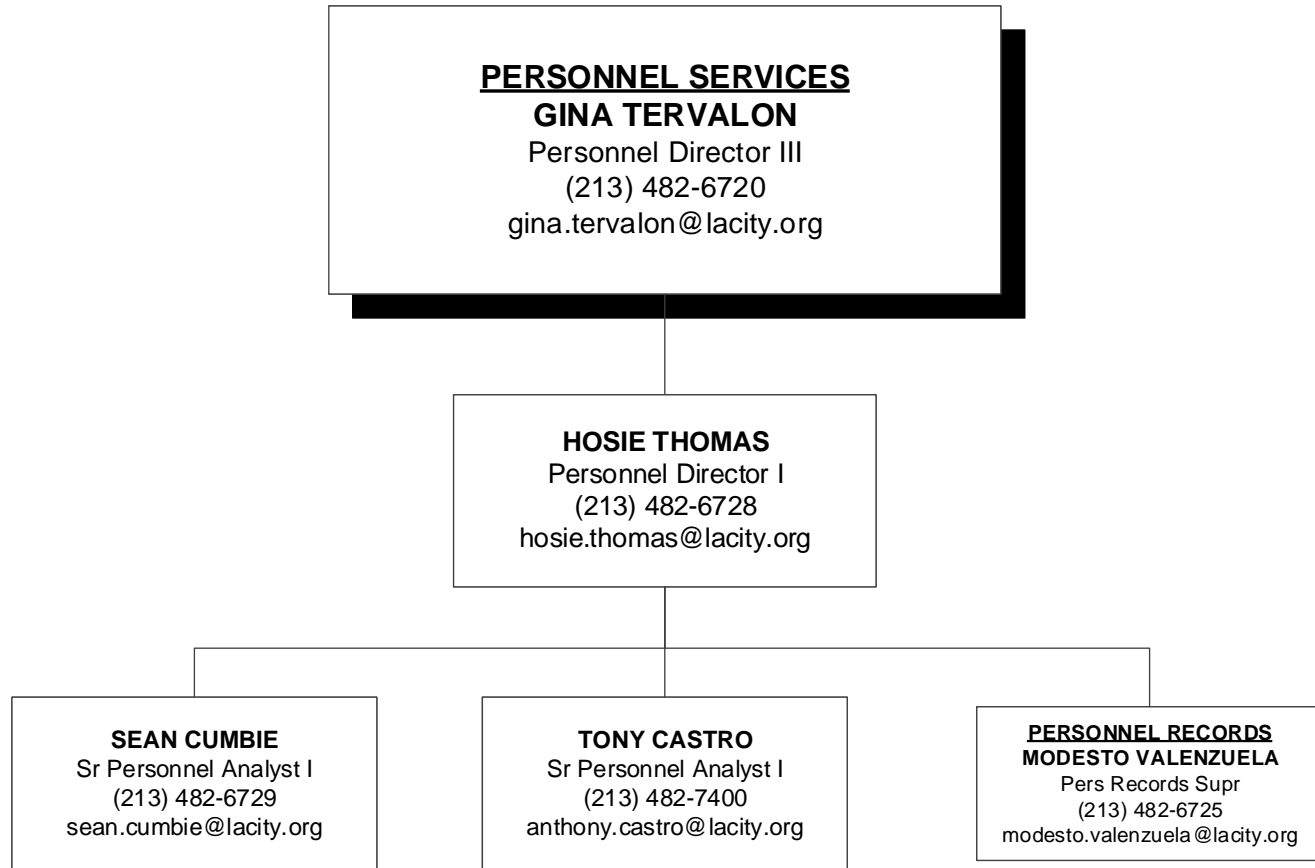
**SPECIAL ASSISTANCE TO
EXECUTIVE OFFICE**
MICHAEL PEREZ
Build Civil Engr I
(213) 482-6520
michael.x.perez@lacity.org

BUILDLA
KAREN PENERA
Project Manager
(213) 482-6749
karen.penera@lacity.org

CAROLYNN JUACALLA
Struc Engr Assc III
(213) 482-0096
carolynn.nepomuceno@lacity.org

CELESTE NGUYEN
Struc Engr Assc II
(213) 482-6855
celeste.morris@lacity.org





PERMIT AND ENGINEERING BUREAU
CATHERINE NUEZCA-GABA, Chief
(213) 482-0440
catherine.nuezcagaba@lacity.org

**DEVELOPMENT SERVICES
CASE MANAGEMENT/LAX/
ePLAN CHECK DIVISION**
CHARMIE HUYNH, Chief
Asst Dep Sup of Bldg II
(213) 482-0440
charmie.huynh@lacity.org
See Chart 5

**STRUCTURAL PLAN CHECK
DIVISION**
VICTOR CUEVAS, Chief
Asst Dep Sup of Bldg II
(213) 482-0440
victor.cuevas@lacity.org
See Chart 6

**HIGH-RISE AND SEISMIC
RETROFIT DIVISION**
SHAHEN AKELYAN, Chief
Asst Dep Sup of Bldg II
(213) 482-0440
shahen.akelyan@lacity.org
See Chart 7

**STRUCTURAL PLAN CHECK
COUNTER DIVISION**
BINH PHAN, Chief
Asst Dep Sup of Bldg II
(213) 482-0440
binh.phan@lacity.org
See Chart 8

**GREEN/ELECTRICAL/
MECHANICAL DIVISION**
ADEL SALAH EDDINE, Chief
Asst Dep Sup of Bldg II
(213) 482-0053
adel.salah-eddine@lacity.org
See Chart 9

PERMIT AND ENGINEERING BUREAU
CATHERINE NUEZCA-GABA, Chief
 (213) 482-0440
 catherine.nuezcagaba@lacity.org

DEVELOPMENT SERVICES CASE MANAGEMENT/LAX/ePLAN CHECK/CODE STUDIES/BOARD
CHARMIE HUYNH, Chief
 Asst Dep Sup of Bldg II
 (213) 482-0440
 charmie.huynh@lacity.org

BOARD OF BUILDING & SAFETY COMMISSION OFFICE
DINA ELKINAWY
 Board Secretary
 Struc Engr Assc III
 (213) 482-9586
 dina.elkinawy@lacity.org

DEVELOPMENT SERVICES CASE MANAGEMENT
CHAD DOI
 Build Civil Engr II
 (213) 482-6877
 chad.doi@lacity.org

CODE ENGINEER / BUILDING RESEARCH
QUAN NGHIEM
 Struc Engr Assc IV
 (213) 482-0409
 quan.nghiem@lacity.org

LAX
LILY TENG
 Build Civil Engr I
 (213) 482-6871
 lily.teng@lacity.org

CASE MANAGEMENT/ PRELIMINARY REVIEW
VACANT
 Build Civil Engr I
 @lacity.org

SUB-DIVISION & ZONING LETTERS
LAURA DUONG
 Struc Engr Assc IV
 (213) 482-0434
 laura.duong@lacity.org

Inspection Coordinators*
JONATHAN ALLEN, Sr Build Inspector
 (213) 473-2153 – jonathan.allen@lacity.org
JOHN DESPARD, Sr Electrical Inspector
 (213) 473-2150 – john.despard@lacity.org
CHRIS NORRIS, Sr HVAC Inspector
 (213) 473-2142 – christopher.norris@lacity.org
PRESTON GILLIARD, Sr Plumbing Inspector
 (213) 473-2151 – preston.gilliard@lacity.org
GUADALUPE TOLEDO, Fire Sprinkler Inspector
 (213) 473-2143 – guadalupe.toledo@lacity.org

Permit and Engineering Coordinators
EDUARDO RODRIGUEZ, Struc Eng Assc IV
 (213) 473-2147 – eduardo.rodriguez@lacity.org
DEAN REYES, Struc Eng Assc III
 (213) 847-3774 – dean.reyes@lacity.org
CATHERINE CHEN, Struc Eng Assc III
 (213) 482-7334 – catherine.chen@lacity.org
MARK WANG, Mech Eng Assc III
 (213) 482-0439 – mark.wang@lacity.org
MEHDI ZANDI, Elec Eng Assc IV
 (213) 482-7114 – mehdi.zandi@lacity.org

PRELIMINARY REVIEW
GARO TELMI
 Struc Engr Assc IV
 (213) 482-0416
 garo.telmi@lacity.org

CASE MANAGEMENT
JOHN FRANCIA
 Struc Engr Assc IV
 (213) 482-0010
 john.franca@lacity.org

RUDOLF KINAR MELIKOFF
 Struc Engr Assc IV
 (818) 374-4332
 rudolf.melikoff@lacity.org

*Reporting to Inspection Bureau

PERMIT AND ENGINEERING BUREAU
CATHERINE NUEZCA-GABA, Chief
 (213) 482-0440
 catherine.nuezcagaba@lacity.org

STRUCTURAL PLAN CHECK DIVISION
VICTOR CUEVAS, Chief
 Asst Dep Sup of Bldg II
 (213) 482-0440
 victor.cuevas@lacity.org

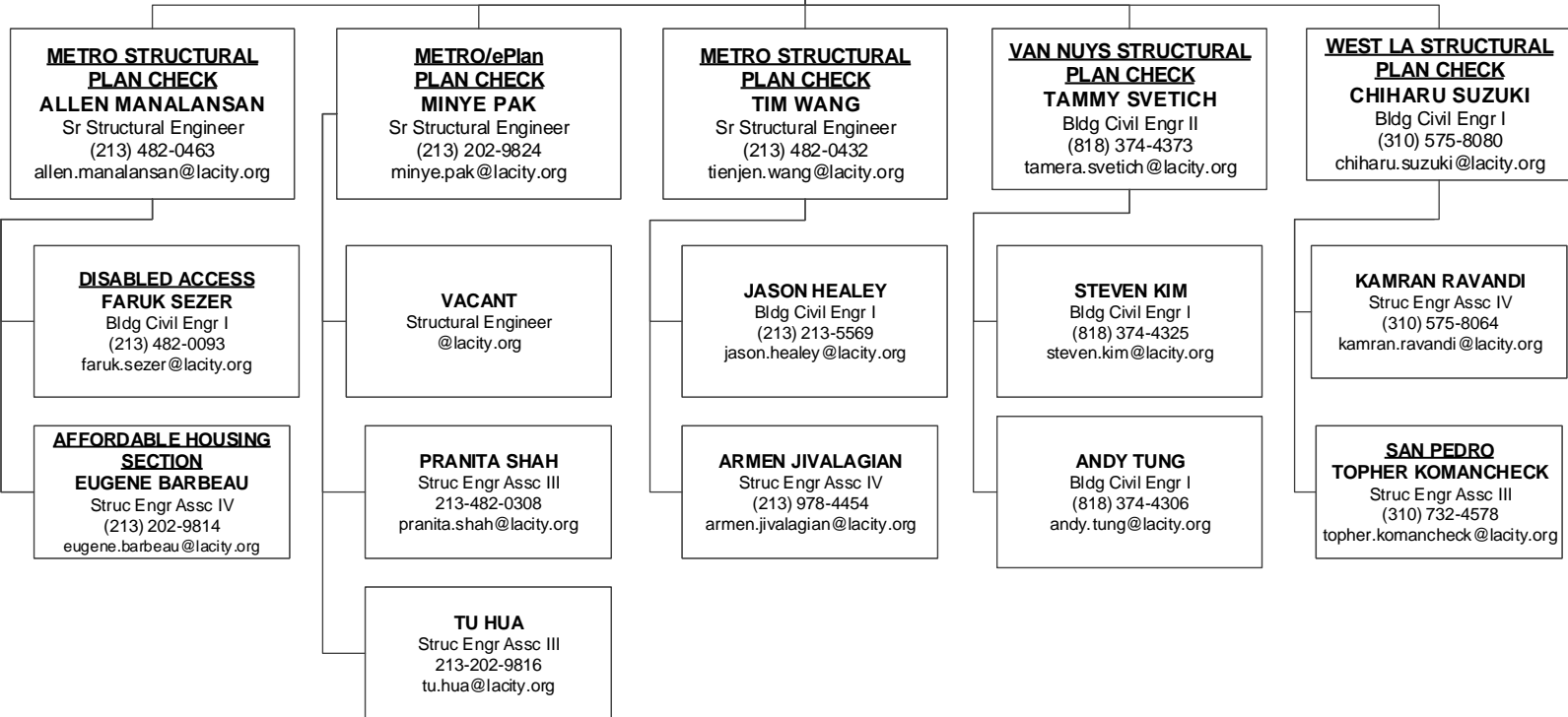
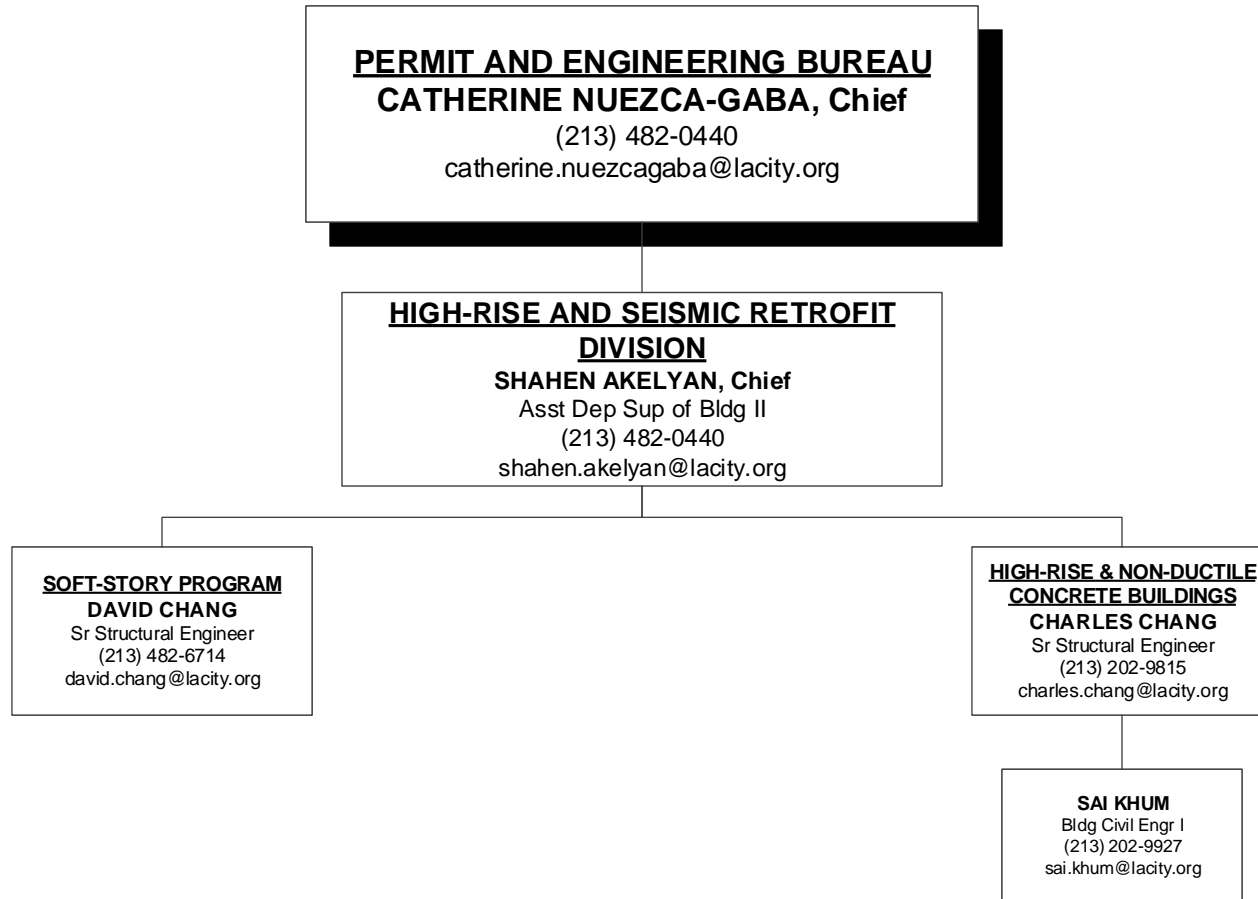


Chart 7



PERMIT AND ENGINEERING BUREAU
CATHERINE NUEZCA-GABA, Chief
 (213) 482-0440
 catherine.nuezcagaba@lacity.org

STRUCTURAL PLAN CHECK COUNTER
DIVISION
BINH PHAN, Chief
 Asst Dep Sup of Bldg II
 (213) 482-0440
 binh.phan@lacity.org

METRO COUNTER
PLAN CHECK
VACANT
 Bldg Civil Engr II
 (213) 482-0092
 @lacity.org

VAN NUYS COUNTER
PLAN CHECK
ALDO UBAU
 Bldg Civil Engr II
 (818) 374-4386
 aldo.ubau@lacity.org

WEST LA
CHI HARU SUZUKI
 Bldg Civil Engr I
 (310) 575-8080
 chiharu.suzuki@lacity.org

EXPRESS PERMITS,
RECORDS & PLAN CHECK
SUPPORT
KATHLEEN RAYGOZA
 Chief Clerk
 (213) 482-6847
 kathleen.raygoza@lacity.org

METRO COUNTER
FELIX FIGUEROA
 Bldg Civil Engr I
 (213) 482-0082
 felix.figueroa@lacity.org

VACANT
 Bldg Civil Engr I
 (818) 374-4307
 @lacity.org

COUNTER PLAN CHECK
MARJAN SHENASI
 Struc Engr Assc III
 (310) 575-8097
 marjan.shenasi@lacity.org

SAN PEDRO
EXPRESS PERMITS
IDA MIRANDA
 Sr Admin Clerk
 (310) 732-4545
 ida.miranda@lacity.org

VAN NUYS RECORDS/
EXPRESS
PERMITS COUNTER
JON BLAINE
 Principal Clerk
 (818) 374-7538
 jon.blaine@lacity.org

METRO
EXPRESS PERMITS/
RECORDS COUNTER
JENNY AYALA
 Principal Clerk
 (213) 482-6851
 jenny.ayala@lacity.org

METRO STRUCTURAL PLAN
CHECK, COUNTER, AND
RESEARCH
JEANNETTE MONTGOMERY
 Principal Clerk
 (213) 482-0461
 jeannette.montgomery@lacity.org

WLA EXPRESS PERMITS
YVONNE TREMBLE
 Sr Admin Clerk
 (310) 575-8181
 yvonne.tremble@lacity.org

SOUTH LA OFFICE
TEO DIAZ
 Struc Engr Assc III
 (323) 789-2782
 teo.diaz@lacity.org

VAN NUYS
CONCIERGE SERVICES
YAQUB MIRZA
 Struc Engr Assc II
 (818) 374-9938
 yaqub.mirza@lacity.org

SAN PEDRO OFFICE
TOPHER KOMANCHECK
 Struc Engr Assc III
 (310) 732-4578
 topher.komanchek@lacity.org

RECORDS COUNTER
MICHELLE CORTEZ
 Sr Admin Clerk
 (818) 374-4390
 michelle.cortez@lacity.org

METRO RECORDS
COUNTER
TERRY RAZO
 Sr Admin Clerk
 (213) 482-6853
 terry.razo@lacity.org

EXPRESS COUNTER
RENEE MARTIN
 Sr Admin Clerk
 (818) 374-4345
 renee.martin@lacity.org

SLA EXPRESS
PERMITS
OSCAR GOMEZ
 Sr Admin Clerk
 (323) 789-2782
 oscar.gomez@lacity.org

METRO
CONCIERGE SERVICES
TSE MING HUANG
 Struc Engr Assc II
 (213) 482-7432
 tse-ming.huang@lacity.org

METRO EXPRESS PERMITS
SAMUEL CRUZ
 Sr Admin Clerk
 (213) 482-6840
 samuel.cruz@lacity.org

PERMIT AND ENGINEERING BUREAU
CATHERINE NUEZCA-GABA, Chief
 (213) 482-0440
 catherine.nuezcagaba@lacity.org

GREEN, ELECTRICAL & MECHANICAL DIVISION
ADEL SALAH EDDINE, Chief
 Asst Dep Sup of Bldg II
 (213) 482-0053
 adel.salah-eddine@lacity.org

GREEN BUILDING
VACANT
 Bldg Civil Engr II
 (213) 202-3450
 @lacity.org

MECHANICAL PLAN CHECK
VACANT
 Bldg Mech Engr II
 (213) 482-0410
 @lacity.org

ELECTRICAL PLAN CHECK
NABIL MAALOUF
 Bldg Elec Engr II
 (213) 482-0052
 nabil.maalouf@lacity.org

METRO ELECTRICAL
PC CNTR/TESTLAB/EBEWE/ LAX
NABIL MAALOUF
 Bldg Elec Engr II
 (213) 482-0052
 nabil.maalouf@lacity.org

VAN NUYS
MICHAEL SCOTT AYERS
 Struc Engr Assc IV
 (818) 374-4308
 michaelscott.ayers@lacity.org

MIKE SHAHRESTANI
 Mech Engr Assc IV
 (213) 482-6940
 mike.shahrestani@lacity.org

VAN NUYS MECHANICAL
PLAN CHECK & COUNTER
MANUEL HERNANDEZ
 Mech Engr Assc III
 (818) 374-4372
 manuel.hernandez@lacity.org

METRO ELECTRICAL
PLAN CHECK
FRANCIS YSAGUIRRE
 Elec Engr Assc IV
 (213) 482-0064
 francis.ysaguirre@lacity.org

ELECTRICAL TEST LAB
BEHROOZ HOORIANI
 Elec Engr Assc IV
 (213) 482-0045
 behrooz.hooriani@lacity.org

WEST LA
RICHARD GARCIA
 Struc Engr Assc II
 (310) 575-8095
 richard.garcia@lacity.org

METRO PLAN CHECK
NEGAR NEJAD
 Struc Engr Assc II
 (213) 482-0436
 negar.nejad@lacity.org

METRO MECHANICAL PLAN
CHECK COUNTER
GREG ARBUCKLE
 Mech Engr Assc III
 (213) 202-2791
 gregory.arbuckle@lacity.org

VAN NUYS ELECTRICAL
PLAN CHECK & COUNTER
ERIC GOSS
 Elec Engr Assc III
 (818) 374-4343
 eric.goss@lacity.org

METRO ELECTRICAL
PLAN CHECK COUNTER
FRANCIS YSAGUIRRE
 Elec Engr Assc IV
 (213) 482-0064
 francis.ysaguirre@lacity.org

METRO MECHANICAL
PLAN CHECK (LAX)
MARK WANG
 Mech Engr Assc III
 (213) 482-0439
 mark.wang@lacity.org

METRO ELECTRICAL
PLAN CHECK (LAX)
MEHDI ZANDI
 Elec Engr Assc IV
 (213) 482-7114
 mehdi.zandi@lacity.org

MECHANICAL TEST LAB
IRENE POOL TAMAYO
 Mech Engr Assc III
 (213) 482-0065
 irene.pool.tamayo@lacity.org

METRO MECHANICAL
PLAN CHECK
RAWAND ARYAN
 Mech Engr Assc III
 (213) 482-0406
 rawand.aryan@lacity.org

INSPECTION BUREAU
PASCAL CHALLITA, Chief
 (213) 482-6712
 pascal.challita@lacity.org
VACANT, Assistant Chief
 (213) 482-0342
 @lacity.org

BUILDING INSPECTION/INSPECTION CASE MANAGEMENT (ICM)/ RESTAURANT & SMALL BUSINESS EXPRESS PROGRAM (RSBEP)
JAMES GARRISON
 Chief Inspector
 (213) 482-0492
 jim.garrison@lacity.org

ELEVATOR/PRESSURE VESSEL INSPECTION
ANDREW LONGORIA
 Chief Inspector
 (213) 202-3467
 andrew.longoria@lacity.org

MATERIALS CONTROL
ADAM BURGESS
 Principal Inspector
 (213) 202-9856
 adam.burgess@lacity.org

METRO
TERRY HERR
 Principal Inspector
 (213) 202-9863
 terry.herr@lacity.org

ELEVATOR INSPECTION
LARRY ISIDRO
 Principal Inspector
 (213) 202-9830
 larry.isidro@lacity.org

SPECIAL EVENTS/TENT INSPECTIONS
DANIEL VARNUM
 Build Inspector
 (213) 202-9861
 daniel.varnum@lacity.org

SOFT STORY INSPECTION
DAVID TSAU
 Sr Build Inspector
 (213) 482-0309
 david.tsau@lacity.org

ELEVATOR INSPECTION METRO
DAVID JENNINGS
 Sr Safety Eng Elev
 (213) 202-9832
 david.jennings@lacity.org

PRESSURE VESSEL INSPECTION CODE DESK METRO
CIRILO REYES
 Sr Safety Eng Press Ves
 (213) 202-9852
 cirilo.reyes@lacity.org

CERTIFIED LICENSED CONTRACTOR (CLC)/ CERTIFIED WELDERS
FELIX CEBALLOS
 Build Inspector
 (213) 482-7359
 felix.ceballos@lacity.org

VAN NUYS
RICKEY JACKSON
 Principal Inspector
 (818) 374-1104
 rickey.jackson@lacity.org

ELEVATOR INSPECTION VN
JIMMIE GRABATIN
 Sr Safety Eng Elev
 (818) 374-1139
 jim.grabatin@lacity.org

PRESSURE VESSEL INSPECTION CODE DESK VN
RENATO FABIAN
 Sr Safety Eng Press Ves
 (818) 374-1149
 renato.fabian@lacity.org

TRADE LICENSING SECTION
CRYSTAL HERNANDEZ
 Sr Admin. Clerk
 (213) 482-0315
 crystal.hernandez@lacity.org

WEST LA
HENRY BAGHDASSARIAN
 Principal Inspector
 (310) 914-3905
 henry.baghdassarian@lacity.org

ELEVATOR INSPECTION WLA
RICHARD OKE
 Sr Safety Eng Elev
 (310) 914-3967
 richard.oke@lacity.org

PRESSURE VESSEL INSPECTION CODE DESK WLA
JUAN CARLOS CHAVEZ
 Sr Safety Eng Press Ves
 (310) 914-3973
 juan.carlos.chavez@lacity.org

SAN PEDRO
NICK LAROCCA
 Sr Build Inspector
 (310) 732-4552
 nick.larocca@lacity.org

ELEVATOR CODE INFORMATION & APPOINTMENTS
 (213) 202-9844
 Fax (213) 202-9922

LAX
JONATHAN ALLEN
 Sr Build Inspector
 (213) 473-2153
 jonathan.allen@lacity.org

RSBEP/ICM ADMIN SUPPORT
TATIA WADE
 Administrative Clerk
 (213) 482-0464
 tatia.wade@lacity.org

INSPECTION BUREAU
PASCAL CHALLITA, Chief
 (213) 482-6712
 pascal.challita@lacity.org
VACANT, Assistant Chief
 (213) 482-0342
 @lacity.org

**PLUMBING/HEATING AND
 FIRE SPRINKLER INSPECTION**
DENVER (SHAWN) HARGIS
 Chief Inspector
 (213) 482-6787
 denver.hargis@lacity.org

ELECTRICAL INSPECTION
JACK CONGER
 Chief Inspector
 (213) 202-9906
 jack.conger@lacity.org

**PLUMBING/HEATING/FIRE
 SPRINKLER INSPECTION**
TIM GRIFFITH
 Principal Inspector
 (213) 482-0354
 tim.griffith@lacity.org

**PLUMBING/HEATING/FIRE
 SPRINKLER INSPECTION**
STEVE KIMBLE
 Principal Inspector
 (213) 202-9885
 steven.kimble@lacity.org

ELECTRICAL INSPECTION
WILLIAM MITCHELL
 Principal Inspector
 (213) 482-0377
 william.mitchell@lacity.org

ELECTRICAL INSPECTION
YERVAND CHAPANYAN
 Principal Inspector
 (213) 482-0302
 yervand.chapanyan@lacity.org

METRO
DEXTER JACKSON, Sr Plumbing
 (213) 482-0061 – dexter.jackson@lacity.org
KEVIN SIMONDS, Sr Fire Sprinkler
 (213) 482-7207 – kevin.simonds@lacity.org
VICENTE VARGAS, Sr HVAC
 (213) 202-5614 – vicente.vargas@lacity.org

VAN NUYS
CORNELL EWELL, Sr Plumbing
 (818) 374-1154 – comell.ewell@lacity.org
JOSEPH TAYLOR, Sr Fire Sprinkler
 (818) 374-9935 – joseph.taylor@lacity.org
KEVIN BROWN, Sr HVAC
 (818) 374-1153 – kevin.brown@lacity.org

METRO
JOHNNY YUTRONICH
 Sr Electrical Inspector
 (213) 202-3176
 johnny.yutronich@lacity.org

VAN NUYS
DOUG VERRAL
 Sr Electrical Inspector
 (818) 374-1136
 douglas.verral@lacity.org

WEST LA
MICHAEL LUNG, Sr Plumbing
 (310) 914-3949 – michael.lung@lacity.org
JOHN BARTON, Sr Fire Sprinkler
 (310) 914-3955 – john.barton@lacity.org
KEVIN KIDD, Sr HVAC
 (310) 914-3961 – kevin.kidd@lacity.org

SAN PEDRO
MICHAEL LUNG
 Plumbing Inspector
 (310) 914-3949
 michael.lung@lacity.org

WEST LA
MIKE TILK
 Sr Electrical Inspector
 (310) 914-3942
 michael.tilk@lacity.org

SAN PEDRO
WON LEE
 Sr Electrical Inspector
 (310) 732-4549
 won.lee@lacity.org

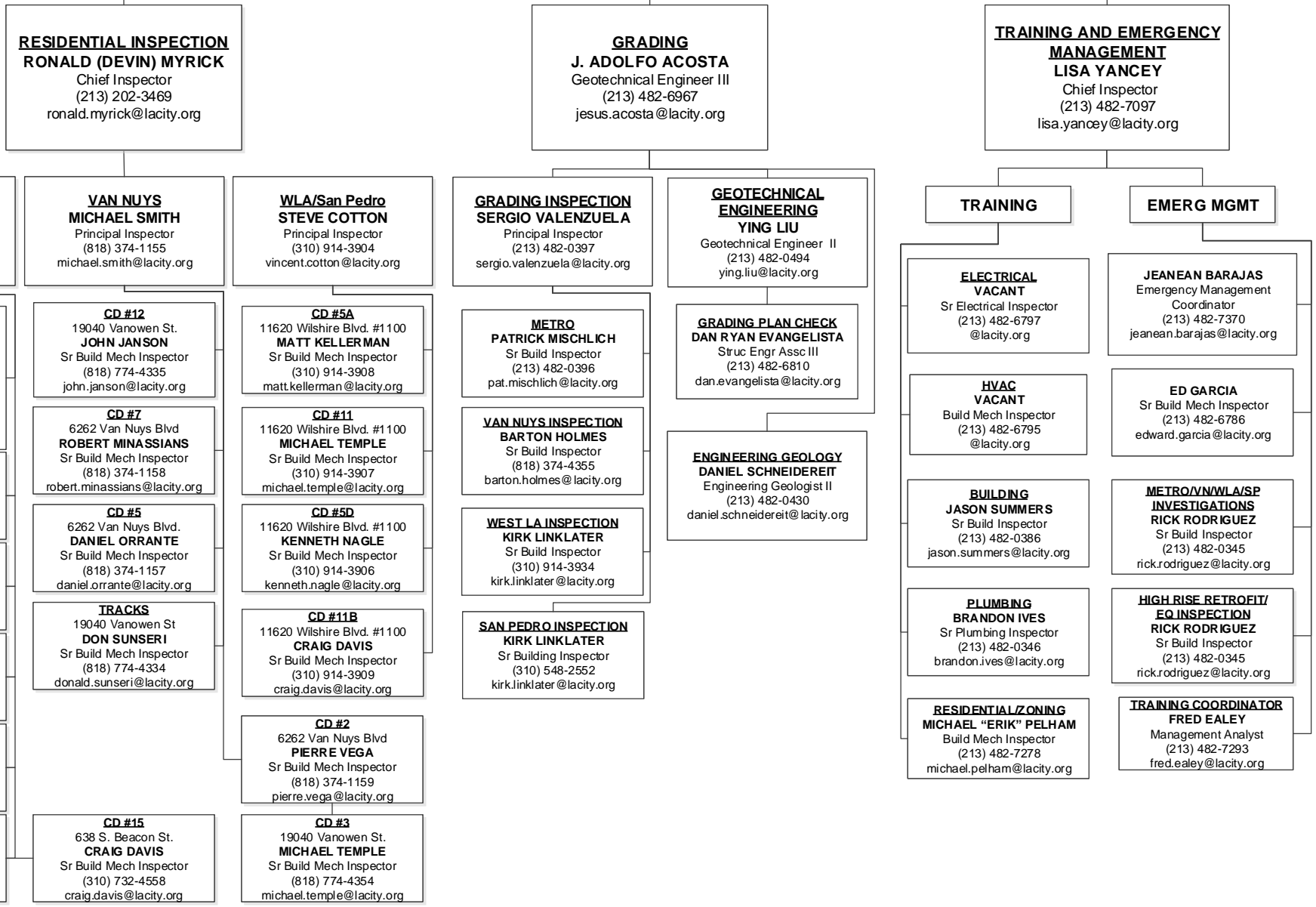
LAX
GUADALUPE TOLEDO, Fire Sprinkler
 (213) 473-2143 – guadalupe.toledo@lacity.org
PRESTON GILLIARD, Sr Plumbing
 (213) 473-2151 – preston.gilliard@lacity.org
CHRIS NORRIS, Sr HVAC
 (213) 473-2142 – christopher.norris@lacity.org

ELECTRICAL CODE INFORMATION
RICK HORN
 Sr Electrical Inspector
 (213) 482-0057
 richard.horn@lacity.org

LAX
JOHN DESPARD
 Sr Electrical Inspector
 (310) 473-2150
 john.despard@lacity.org

PLUMBING CODE INFORMATION
 (213) 482-0061
 Fax (213) 482-7410

INSPECTION BUREAU
PASCAL CHALLITA, Chief
 (213) 482-6712
 pascal.challita@lacity.org
ERIC JAKEMAN, Assistant Chief
 (213) 202-9869
 eric.jakeman@lacity.org



CODE ENFORCEMENT BUREAU

JOHN BIEZINS, Chief

(213) 252-3902

john.biezins@lacity.org

FRANK LARA, Assistant Chief

(213) 252-3310

frank.lara@lacity.org

FAITH MAULUPE
Principal Clerk
(213) 252-3376
faith.maulupe@lacity.org

GENERAL ENFORCEMENT & SPECIALTY/SIGNS INSPECTION

JEFF NAPIER

Chief Inspector/Public Information Officer
(213) 263-6846
jeff.napier@lacity.org

GENERAL ENFORCEMENT, ANNUAL INSPECTION MONITORING, PROACTIVE CODE ENFORCEMENT, & VACANT BUILDING ABATEMENT

VACANT

Chief Inspector/Alternate Public Information Officer
(213) 252-3931
@lacity.org

CITYWIDE SIGNS
ARMOND GREGORYONA
Principal Inspector
(213) 252-3082
armond.gregoryona@lacity.org

CENTRAL REGION GENERAL ENFORCEMENT
DANIEL SANCHEZ
Principal Inspector
(213) 252-3926
daniel.sanchez@lacity.org

SOUTH REGION GENERAL ENFORCEMENT
BRUCE TODD
Principal Inspector
(213) 978-4502
bruce.todd@lacity.org

CITYWIDE ANNUAL INSPECTION MONITORING
MIKE BEVERIDGE
Principal Inspector
(818) 374-9806
michael.beveridge@lacity.org

NORTH REGION GENERAL ENFORCEMENT
MIKE BEVERIDGE
Principal Inspector
(818) 374-9806
michael.beveridge@lacity.org

CITYWIDE PACE 2 & 3
ARMOND GREGORYONA
Principal Inspector
(213) 252-3082
armond.gregoryona@lacity.org

CITYWIDE VBA & FORECLOSURE REGISTRY PROGRAM
ARMOND GREGORYONA
Principal Inspector
(213) 252-3082
armond.gregoryona@lacity.org

SIGN ENFORCEMENT
SHAWN ESHBACH
Sr Build Mech Inspector
(213) 252-3909
shawn.eshbach@lacity.org

CD #1
AUGUSTUS ALBAS
Sr Build Mech Inspector
(213) 252-3038
augustus.albas@lacity.org

CD #8
DANIEL GONZALEZ
Sr Build Mech Inspector
(213) 978-4504
daniel.a.gonzalez@lacity.org

NORTH REGION WILLIE ROSS
Sr Build Mech Inspector
(818) 374-9837
willie.ross@lacity.org

CD #2
MARK RUDE
Sr Build Mech Inspector
(818) 374-9858
mark.rude@lacity.org

PRO-ACTIVE CODE ENFORCEMENT 2
MARK BEVELAQUA
Sr Build Mech Inspector
(213) 252-3352
mark.bevelaqua@lacity.org

VACANT BUILDING ABATEMENT
MICHAEL SCHULZINGER
Sr Build Mech Inspector
(213) 252-3962
michael.schulzinger@lacity.org

NEW CONSTRUCTION
SHAWN ESHBACH
Sr Build Mech Inspector
(213) 252-3909
shawn.eshbach@lacity.org

CD #4
JOEL WILLIAMS
Sr Build Mech Inspector
(213) 482-0469
joel.n.williams@lacity.org

CD #9
SAM PORTILLO
Sr Build Mech Inspector
(213) 978-4495
sam.portillo@lacity.org

METRO REGION CHRISTOPHER LEKO
Sr Build Mech Inspector
(213) 252-3041
christopher.leko@lacity.org

CD #3
ROBERT SUNSERI
Sr Build Mech Inspector
(818) 374-9857
robert.sunseri@lacity.org

PRO-ACTIVE CODE ENFORCEMENT 3
RICK CARPENTER
Sr Build Mech Inspector
(213) 252-3349
ulric.carpenter@lacity.org

OFF-SITE SIGNS PERIODIC INSPECTION PROGRAM
SHAWN ESHBACH
Sr Build Mech Inspector
(213) 252-3909
shawn.eshbach@lacity.org

CD #5
DAVID HICKMAN
Sr Build Mech Inspector
(213) 252-3049
david.hickman@lacity.org

CD #10
JOHN JAEGER S
Sr Build Mech Inspector
(213) 252-3964
john.jaegers@lacity.org

CD #6
DAVID JAMES
Sr Build Mech Inspector
(818) 374-9858
dave.james@lacity.org

CD #13
ROBERT MINASSIANS
Sr Build Mech Inspector
(213) 252-3960
robert.minassians@lacity.org

CD #11
JOHN MATTILLO
Sr Build Mech Inspector
(213) 978-4498
john.mattillo@lacity.org

CD #7
MARSHAL RUMPF
Sr Build Mech Inspector
(818) 374-9820
marshall.rumpf@lacity.org

CD #14
MARK VAN SLOOTEN
Sr Build Mech Inspector
(323) 526-9348
mark.vanslooten@lacity.org

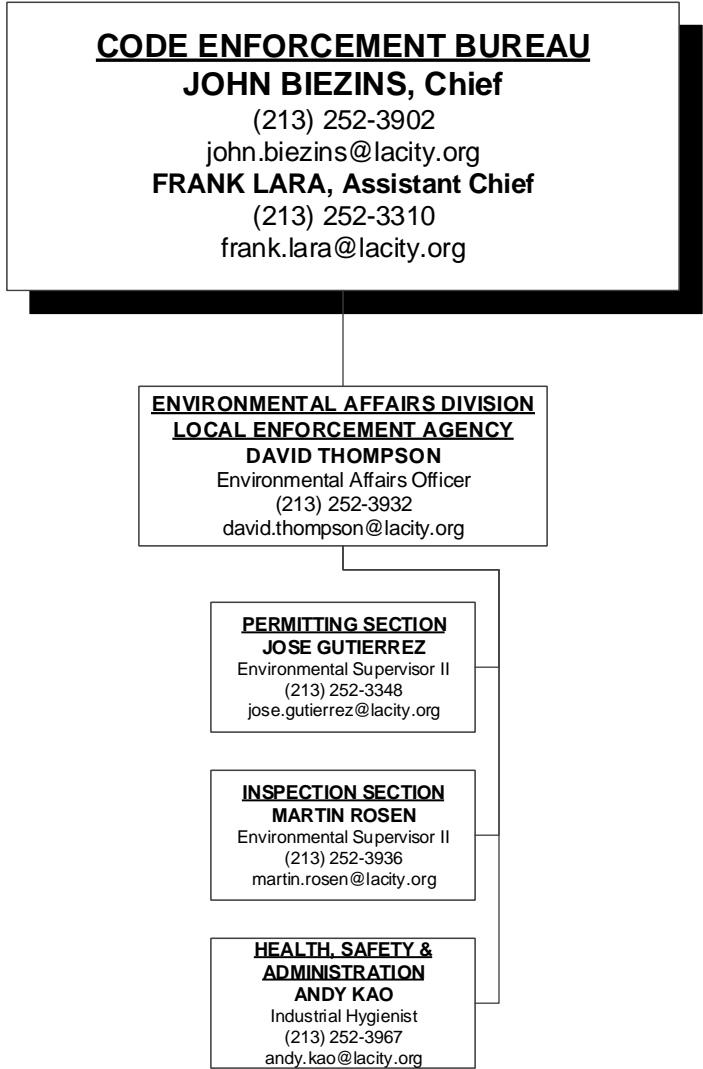
CD #15
PAUL BECKER
Sr Build Mech Inspector
(310) 732-4530
paul.becker@lacity.org

CD #12
JASON SIBLEY
Sr Build Mech Inspector
(818) 374-9853
jason.sibley@lacity.org

LEGAL LIAISON
BRYAN EPSTEIN
Sr. Fire Sprinkler Inspector
(213) 252-3393
bryan.epstein@lacity.org

LEGAL LIAISON
CLAUDIO MORENO
Sr Build Mech Inspector
(213) 978-4503
claudio.moreno@lacity.org

LEGAL LIAISON
ROBERT GOLD
Sr Build Mech Inspector
(818) 374-9859
robert.gold@lacity.org



RESOURCE MANAGEMENT BUREAU

ANA MAE YUTAN, Chief

(213) 482-6703

anamae.yutan@lacity.org

VERONICA E. SALUMBIDES,
Assistant Chief
 Chief Mgmt Analyst
 (213) 482-6782
 veronica.salumbides@lacity.org

CYNTHIA KHO, Assistant Chief
 Dept Chief Accountant IV
 (213) 482-6815
 cynthia.kho@lacity.org

ADMINISTRATIVE SERVICES DIVISION

RISK & RECORDS MANAGEMENT DIVISION

FINANCIAL SERVICES DIVISION

ZACHARY DE CORSE
 Sr Mgmt Analyst II
 (213) 482-6746
 zachary.decorse@lacity.org

TERESA ABRAHAM
 Sr Mgmt Analyst II
 (213) 482-6766
 teresa.abraham@lacity.org

CHRISTINA TABIRARA
 Principal Accountant II
 (213) 482-6804
 christina.tabirara@lacity.org

CASHIERING SERVICES
VICTORIA VASQUEZ
 Chief Cashier
 (213) 482-6953
 mariavictoria.vasquez@lacity.org

TRAVEL REQUESTS, FORMS CONTROL, & NEWSLETTERS
SOMAPUN PONGQUAN
 Sr Mgmt Analyst I
 (213) 482-6748
 somapun.pongquan@lacity.org

CUSTODIAN OF RECORDS
MICHAEL BOUVET
 Management Analyst
 (213) 482-6704
 michael.bouvet@lacity.org

ACCOUNTS PAYABLE
EMILY HU
 Sr Accountant I
 (213) 482-6534
 emily.hu@lacity.org

PRECY SANCHEZ
 Accounting Rec Supvr I
 (213) 482-6955
 precy.sanchez@lacity.org

PURCHASING COORDINATOR
RYAN SOLIS
 Management Analyst
 (213) 482-7318
 ryan.solis@lacity.org

DATA AND RECORDS MANAGEMENT
VICTORIA LIRA
 Chief Clerk
 (213) 482-6757
 victoria.lira@lacity.org

SUPPLIES
JOHN BOROUGH
 Store Keeper II
 (213) 482-6813
 john.borough@lacity.org

TONY PELAEZ
 Sr Mgmt Analyst II
 (213) 482-6816
 tony.pelaez@lacity.org

CONTRACTS AND GRANTS ADMINISTRATOR, COMM. SERVICES, REPORTS MANAGER
CHRISTINE WAI
 Sr Mgmt Analyst I
 (213) 482-6740
 christine.wai@lacity.org

IDIS & SUBJECT SPECIALTY CALL GROUP
CHAUNTEL MARTIN
 Principal Clerk
 (213) 482-6560
 chauntel.martin@lacity.org

PAYROLL AND FUND ADMIN
EMMA PANGILINAN
 Sr Accountant I
 (213) 482-7347
 emma.pangilinan@lacity.org

LIENS
CHARLES KALIBBALA
 Sr Accountant I
 (213) 202-9829
 charles.kalibbala@lacity.org

FACILITIES COORDINATOR
PATRICK EVERDING
 Management Analyst
 (213) 482-6741
 patrick.everding@lacity.org

SUBJECT SPECIALTY CALL GROUP
LORENA ESPINOZA
 Sr Admin Clerk
 (213) 482-6549
 lorena.espinoza@lacity.org

ADMINISTRATIVE SERVICES DIVISION MAIN LINE
 (213) 482-6776
 LADBS.ASD@lacity.org

TECHNOLOGY SERVICES BUREAU
JENNIFER BANOS, Chief
 (213) 482-0001
 jennifer.banos@lacity.org
GREG WILCOX, Director of Systems
 (213) 482-0031
 greg.wilcox@lacity.org

ADMINISTRATIVE DIVISION
CINDY OHARA
 Systems Programmer II
 (213) 482-0002
 cindy.ohara@lacity.org

CUSTOMER ENGAGEMENT DIVISION
MINH ONG
 Build Civil Engr I
 (213) 482-0029
 minh.ong@lacity.org

APPLICATION SERVICES DIVISION
JEANNE LY
 Systems Programmer III
 (213) 482-0046
 jeanne.ly@lacity.org

OPERATIONS AND INFRASTRUCTURE DIVISION
KENNETH SMITH
 Sr Sys Analyst II
 (213) 202-3101
 kenneth.smith@lacity.org

BUSINESS ANALYSIS SERVICES
REBECCA ARIOSA
 Sr Sys Analyst I
 (213) 482-0041
 rebecca.ariosa@lacity.org

SUBJECT MATTER EXPERT SERVICES
VACANT
 (213) 482-0031
 @lacity.org

WEBSITE SUPPORT
VACANT
 (213) 482-0031
 @lacity.org

DATA AND SYSTEM SUPPORT
LING KE
 Database Architect
 (213) 482-0026
 ling.ke@lacity.org

DATA AND SYSTEMS SUPPORT
TUNG PHAN
 Database Architect
 (213) 482-0031
 tung.phan@lacity.org

APPLICATION DEVELOPMENT
SHANNON HAAS
 Systems Programmer I
 (213) 482-0050
 shannon.haas@lacity.org

PERMITTING SYSTEM
WEI BIN HE
 Programmer Analyst V
 (213) 482-0037
 wei.he@lacity.org

INFRASTRUCTURE AND DEVOPS SUPPORT
LINDA KHA
 Systems Programmer III
 (213) 482-0051
 linda.kha@lacity.org

NETWORK AND SECURITY SUPPORT
KEN LAM
 Systems Programmer III
 (213) 202-9962
 ken.lam@lacity.org

OPERATIONS
VACANT
 Sr Sys Analyst I
 (213) 482-0031
 @lacity.org