



ORGANIZATIONAL CHART & TELEPHONE DIRECTORY

This directory is designed to:

1. Give users direct access to the Department's top-level management and supervisory personnel, and
2. To see where the managers and supervisors fit into the Department's chain-of-command structure.

FOR AUTOMATED INSPECTION REQUESTS ONLY,
YOU MAY CALL TOLL FREE FROM ANYWHERE
IN LOS ANGELES COUNTY:

1-888-524-2845

OR

OUTSIDE LOS ANGELES COUNTY

213-482-0000

TDD Line 888-833-8389

FOR ALL OTHER SERVICES OR INFORMATION WITHIN
THE CITY OF LOS ANGELES

3-1-1

OR

OUTSIDE LOS ANGELES CITY

1-213-473-3231

For more information regarding the Los Angeles Department of Building and Safety, please visit www.ladbs.org.

TELEPHONE DIRECTORY INDEX

DEPARTMENT OF BUILDING AND SAFETY

| | |
|--|---------|
| Executive and Bureau Management | Chart 1 |
| Government and Community Relations Division..... | Chart 2 |
| Development Services Case Management Division | |
| Case Management..... | Chart 3 |
| Preliminary Review..... | Chart 3 |
| Building Research | Chart 3 |
| Personnel Services..... | Chart 4 |

PERMIT AND ENGINEERING BUREAU

| | |
|---|---------|
| Permit and Engineering Bureau Management | Chart 5 |
| Structural Plan Check Division | |
| Metro and ePlan Check | Chart 6 |
| Van Nuys District Office | Chart 6 |
| West LA District Office | Chart 6 |
| High-Rise, Seismic Retrofit and LAX Projects Division | |
| Soft-Story Retrofit Program | Chart 7 |
| High-Rise and Non-Ductile Concrete Buildings | Chart 7 |
| LAX | Chart 7 |
| Structural Plan Check Counter Division | |
| Metro Plan Check | Chart 8 |
| South LA District Office | Chart 8 |
| Van Nuys District Office | Chart 8 |
| West LA District Office | Chart 8 |
| San Pedro District Office | Chart 8 |
| Concierge Services | Chart 8 |
| Green/Electrical/Mechanical (GEM) Plan Check Division | |
| Green Building Plan Check / Inspection | Chart 9 |
| Mechanical Plan Check and Test Lab | Chart 9 |
| Electrical Plan Check and Test Lab | Chart 9 |

INSPECTION BUREAU

| | |
|---|----------|
| Commercial Building Inspection | Chart 10 |
| Elevator and Pressure Vessel..... | Chart 10 |
| Commercial Inspection | Chart 11 |
| Plumbing, Heating and Fire Sprinkler / Electrical | |
| Residential Inspection..... | Chart 12 |
| Metro / Van Nuys / West LA / San Pedro | |
| Grading Engineering and Inspection..... | Chart 12 |
| Training and Emergency Management Division | Chart 12 |

CODE ENFORCEMENT BUREAU

| | |
|---|----------|
| Citywide Signs Code Enforcement | Chart 13 |
| General Enforcement and Annual Inspection Monitoring..... | Chart 13 |
| Citywide Pro-Active Code Enforcement..... | Chart 13 |
| Citywide Vacant Building Abatement and Foreclosure Registry Program | Chart 13 |
| Environmental Affairs Division, Local Enforcement Agency..... | Chart 14 |

RESOURCE MANAGEMENT BUREAU

| | |
|--|----------|
| Administrative Services Division | Chart 15 |
| Financial Services Division | Chart 15 |
| Risk and Records Management Division | Chart 15 |

TECHNOLOGY SERVICES BUREAU

| | |
|---|----------|
| Customer Engagement Division | Chart 16 |
| Application Services Division..... | Chart 16 |
| Operations and Infrastructure Division..... | Chart 16 |
| Administration Division | Chart 16 |

DEPARTMENT OF BUILDING AND SAFETY

Chart 1

OSAMA YOUNAN
GENERAL MANAGER
(213) 482-6800
osama.younan@lacity.org

**GOVERNMENT & COMMUNITY
RELATIONS**

FRANK LARA, Director
(213) 482-0447
frank.lara@lacity.org
(See Chart 2 & 3)

EXECUTIVE OFFICER

JOHN WEIGHT
(213) 482-6800
john.weight@lacity.org

PERSONNEL SERVICES

GINA TERVALON
Personnel Director III
(213) 482-6720
gina.tervalon@lacity.org
(See Chart 4)

PERMIT AND ENGINEERING BUREAU

PASCAL CHALLITA, Chief
(213) 482-0440
pascal.challita@lacity.org
(See Charts 5, 6, 7, 8 & 9)

RESOURCE MANAGEMENT BUREAU

ANA MAE YUTAN, Chief
(213) 482-6703
anamae.yutan@lacity.org
(See Chart 15)

INSPECTION BUREAU

JOHN BIEZINS, Chief
(213) 482-6712
john.biezins@lacity.org
(See Charts 10, 11 & 12)

CODE ENFORCEMENT BUREAU

CATHERINE NUEZCA-GABA, Chief
(213) 252-3902
catherine.nuezcagaba@lacity.org
(See Charts 13 & 14)

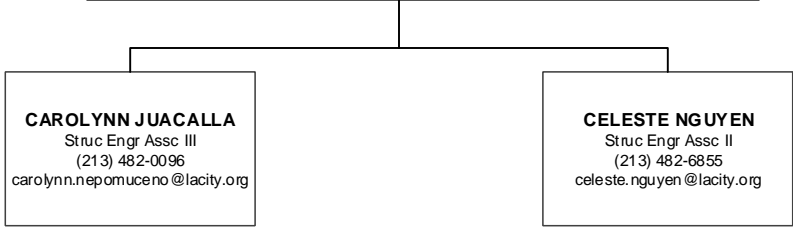
TECHNOLOGY SERVICES BUREAU

VACANT, Chief
(213) 482-0001
@lacity.org
(See Chart 16)

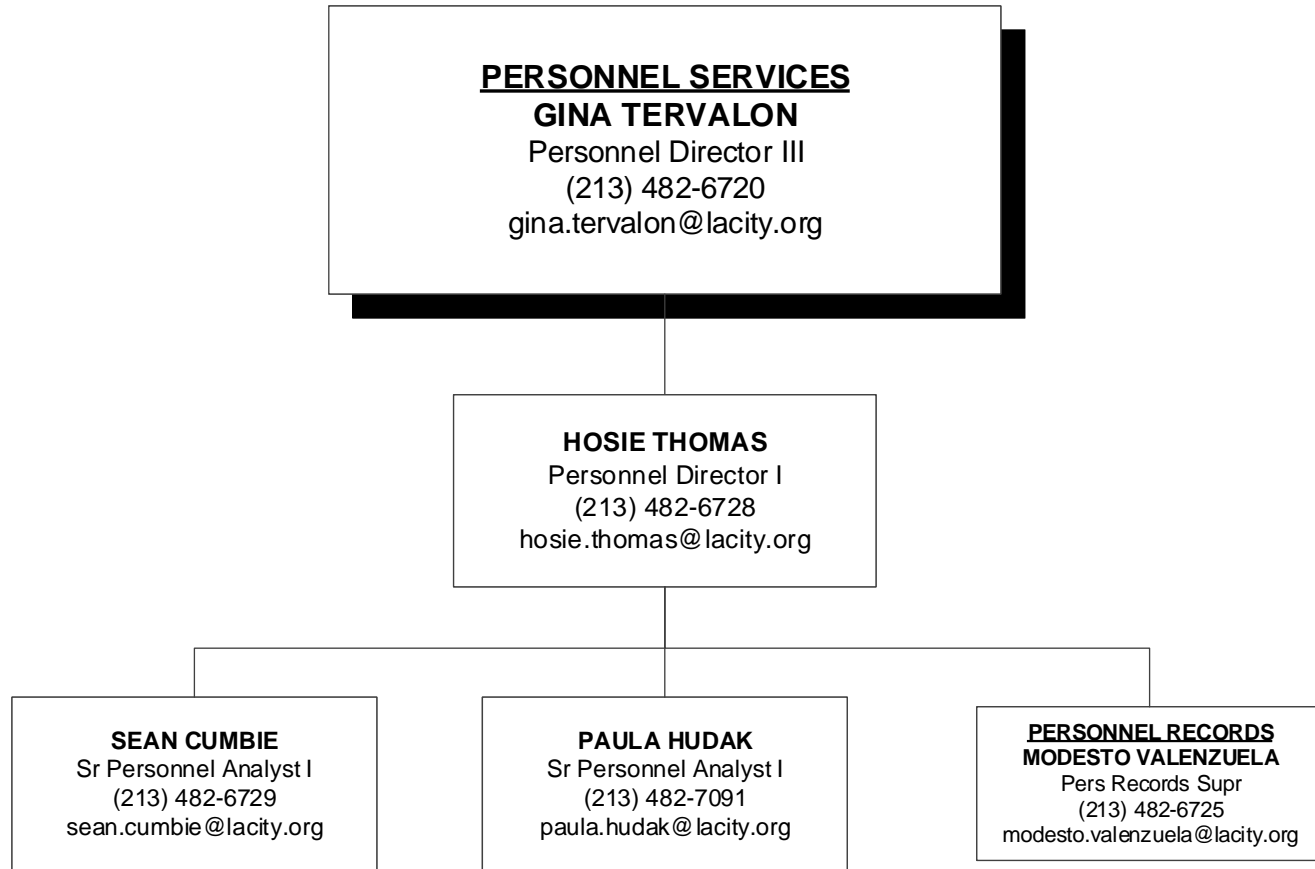
GOVERNMENT & COMMUNITY RELATIONS
DIVISION
FRANK LARA, Director
(213) 482-0447
frank.lara@lacity.org

CAROLYNN JUACALLA
Struc Engr Assc III
(213) 482-0096
carolynn.nepomuceno@lacity.org

CELESTE NGUYEN
Struc Engr Assc II
(213) 482-6855
celeste.nguyen@lacity.org







PERMIT AND ENGINEERING BUREAU

PASCAL CHALLITA, Chief

(213) 482-0440

pascal.challita@lacity.org

**GREEN/ELECTRICAL/
MECHANICAL DIVISION**
ADEL SALAH EDDINE, Chief
Asst Dep Sup of Bldg II
(213) 482-0053
adel.salah-eddine@lacity.org
See Chart 9

**STRUCTURAL PLAN CHECK
DIVISION**
BINH PHAN, Chief
Asst Dep Sup of Bldg II
(213) 482-0440
binh.phan@lacity.org
See Chart 6

**HIGH-RISE. SEISMIC
RETROFIT AND LAX
PROJECTS DIVISION**
CHARMIE HUYNH, Chief
Asst Dep Sup of Bldg II
(213) 482-0440
charmie.hyunh@lacity.org
See Chart 7

**STRUCTURAL PLAN CHECK
COUNTER DIVISION**
SHAHEN AKELYAN, Chief
Asst Dep Sup of Bldg II
(213) 482-0440
shahen.akelyan@lacity.org
See Chart 8

PERMIT AND ENGINEERING BUREAU
PASCAL CHALLITA, Chief
(213) 482-0440
pascal.challita@lacity.org

STRUCTURAL PLAN CHECK DIVISION
BINH PHAN, Chief
Asst Dep Sup of Bldg II
(213) 482-0440
binh.phan@lacity.org

**METRO STRUCTURAL
PLAN CHECK**
ALLEN MANALANSAN
Sr Structural Engineer
(213) 482-0463
allen.manalansan@lacity.org

**METRO/ePlan
PLAN CHECK**
MINYE PAK
Sr Structural Engineer
(213) 202-9824
minye.pak@lacity.org

**VAN NUYS STRUCTURAL
PLAN CHECK**
TAMMY SVETICH
Bldg Civil Engr II
(818) 374-4373
tamera.svetich@lacity.org

**WEST LA STRUCTURAL
PLAN CHECK**
CHIHARU SUZUKI
Bldg Civil Engr I
(310) 575-8080
chiharu.suzuki@lacity.org

DISABLED ACCESS
FARUK SEZER
Bldg Civil Engr I
(213) 482-0093
faruk.sezer@lacity.org

WING SUEN
Structural Engineer
213-202-5406
wing.suen@lacity.org

STEVEN KIM
Bldg Civil Engr I
(818) 374-4325
steven.kim@lacity.org

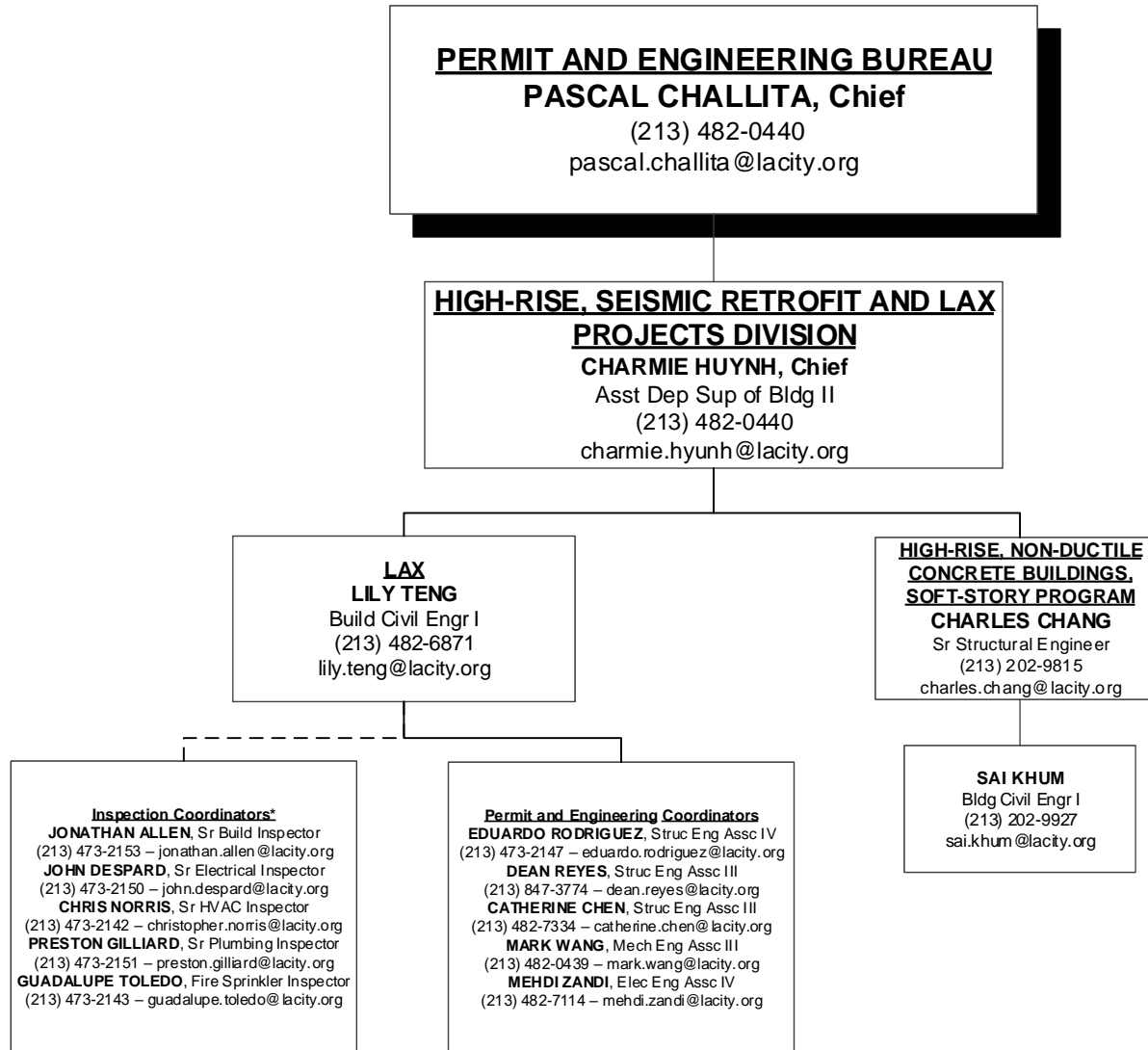
KAMRAN RAVANDI
Struc Engr Assc IV
(310) 575-8064
kamran.ravandi@lacity.org

**AFFORDABLE HOUSING
SECTION**
EUGENE BARBEAU
Struc Engr Assc IV
(213) 202-9814
eugene.barbeau@lacity.org

MICHAEL PEREZ
Struc Engr Assc III
213-482-0432
michael.x.perez@lacity.org

ANDY TUNG
Bldg Civil Engr I
(818) 374-4306
andy.tung@lacity.org

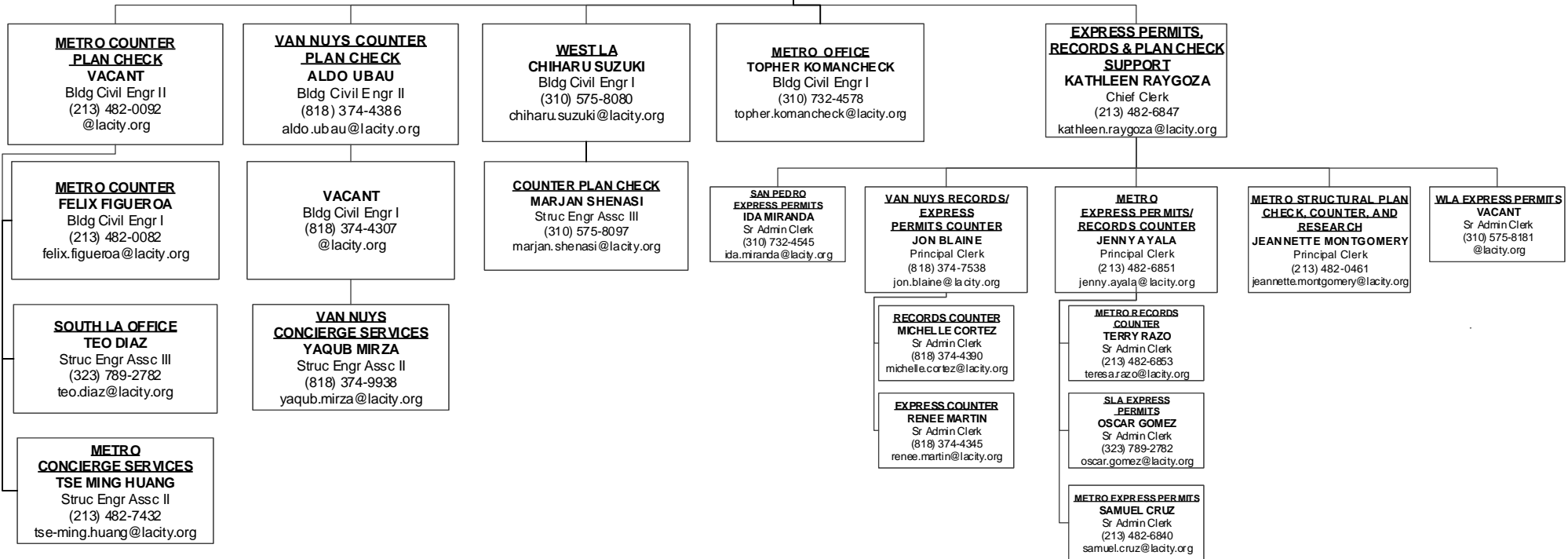
JASON HEALEY
Bldg Civil Engr I
(213) 213-5569
jason.healey@lacity.org



*Reporting to Inspection Bureau

PERMIT AND ENGINEERING BUREAU
PASCAL CHALLITA, Chief
 (213) 482-0440
 pascal.challita@lacity.org

STRUCTURAL PLAN CHECK COUNTER DIVISION
SHAHEN AKELYAN, Chief
 Asst Dep Sup of Bldg II
 (213) 482-0440
 shahen.akelyan@lacity.org



PERMIT AND ENGINEERING BUREAU
PASCAL CHALLITA, Chief
(213) 482-0440
pascal.challita@lacity.org

GREEN, ELECTRICAL & MECHANICAL DIVISION
ADEL SALAH EDDINE, Chief
Asst Dep Sup of Bldg II
(213) 482-0053
adel.salah-eddine@lacity.org

GREEN BUILDING VACANT
Bldg Civil Engr II
(213) 202-3450
@lacity.org

MECHANICAL PLAN CHECK VACANT
Bldg Mech Engr II
(213) 482-0410
@lacity.org

ELECTRICAL PLAN CHECK
NABIL MAALOUF
Bldg Elec Engr II
(213) 482-0052
nabil.maalouf@lacity.org

METRO ELECTRICAL PC CNTR/TEST LAB/EBEWE/LAX
NABIL MAALOUF
Bldg Elec Engr II
(213) 482-0052
nabil.maalouf@lacity.org

VAN NUYS
MICHAEL SCOTT AYERS
Struc Engr Assc IV
(818) 374-4308
michaelscott.ayers@lacity.org

MIKE SHAHRESTANI
Mech Engr Assc IV
(213) 482-6940
mike.shahrestani@lacity.org

VAN NUYS MECHANICAL PLAN CHECK & COUNTER
MANUEL HERNANDEZ
Mech Engr Assc III
(818) 374-4372
manuel.hernandez@lacity.org

METRO ELECTRICAL PLAN CHECK
FRANCIS YSAGUIRRE
Elec Engr Assc IV
(213) 482-0064
francis.ysaguirre@lacity.org

ELECTRICAL TEST LAB
BEHROOZ HOORIANI
Elec Engr Assc IV
(213) 482-0045
behrooz.hooriani@lacity.org

WEST LA
RICHARD GARCIA
Struc Engr Assc II
(310) 575-8095
richard.garcia@lacity.org

METRO PLAN CHECK
NEGAR NEJAD
Struc Engr Assc II
(213) 482-0436
negar.nejad@lacity.org

METRO MECHANICAL PLAN CHECK COUNTER
GREG ARBUCKLE
Mech Engr Assc III
(213) 202-2791
gregory.arbuckle@lacity.org

VAN NUYS ELECTRICAL PLAN CHECK & COUNTER
ERIC GOSS
Elec Engr Assc III
(818) 374-4343
eric.goss@lacity.org

METRO ELECTRICAL PLAN CHECK COUNTER
FRANCIS YSAGUIRRE
Elec Engr Assc IV
(213) 482-0064
francis.ysaguirre@lacity.org

METRO MECHANICAL PLAN CHECK (LAX)
MARK WANG
Mech Engr Assc III
(213) 482-0439
mark.wang@lacity.org

METRO ELECTRICAL PLAN CHECK (LAX)
MEHDI ZANDI
Elec Engr Assc IV
(213) 482-7114
mehdi.zandi@lacity.org

MECHANICAL TEST LAB
IRENE POOL TAMAYO
Mech Engr Assc III
(213) 482-0065
irene.pool.tamayo@lacity.org

METRO MECHANICAL PLAN CHECK
RAWAND ARYAN
Mech Engr Assc III
(213) 482-0406
rawand.aryan@lacity.org

INSPECTION BUREAU
JOHN BIEZINS, Chief
 (213) 482-6712
 john.biezins@lacity.org
DENVER (SHAWN) HARGIS, Assistant Chief
 (213) 482-0342
 denver.hargis@lacity.org

BUILDING INSPECTION/INSPECTION CASE MANAGEMENT (ICM)/ RESTAURANT & SMALL BUSINESS EXPRESS PROGRAM (RSBEP)
JAMES GARRISON
 Chief Inspector
 (213) 482-0492
 jim.garrison@lacity.org

ELEVATOR/PRESSURE VESSEL INSPECTION
VACANT
 Chief Inspector
 (213) 202-3467
 @lacity.org

MATERIALS CONTROL
ADAM BURGESS
 Principal Inspector
 (213) 202-9856
 adam.burgess@lacity.org

METRO
TERRY HERR
 Principal Inspector
 (213) 202-9863
 terry.herr@lacity.org

ELEVATOR INSPECTION
LARRY ISIDRO
 Principal Inspector
 (213) 202-9830
 larry.isidro@lacity.org

SPECIAL EVENTS/TENT INSPECTIONS
DANIEL VARNUM
 Build Inspector
 (213) 202-9861
 daniel.varnum@lacity.org

SOFT STORY INSPECTION
DAVID TSAU
 Sr Build Inspector
 (213) 482-0309
 david.tsau@lacity.org

ELEVATOR INSPECTION METRO
DAVID JENNINGS
 Sr Safety Eng Elev
 (213) 202-9832
 david.jennings@lacity.org

PRESSURE VESSEL INSPECTION CODE DESK METRO
CIRILO REYES
 Sr Safety Eng Press Ves
 (213) 202-9852
 cirilo.reyes@lacity.org

CERTIFIED LICENSED CONTRACTOR (CLC)/ CERTIFIED WELDERS
FELIX CEBALLOS
 Build Inspector
 (213) 482-7359
 felix.ceballos@lacity.org

VAN NUYS
RICKEY JACKSON
 Principal Inspector
 (818) 374-1104
 rickey.jackson@lacity.org

ELEVATOR INSPECTION VN
JIMMIE GRABATIN
 Sr Safety Eng Elev
 (818) 374-1139
 jim.grabatn@lacity.org

PRESSURE VESSEL INSPECTION CODE DESK VN
RENATO FABIAN
 Sr Safety Eng Press Ves
 (818) 374-1149
 renato.fabian@lacity.org

TRADE LICENSING SECTION
CRYSTAL HERNANDEZ
 Sr Admin. Clerk
 (213) 482-0315
 crysta.lhernandez@lacity.org

WEST LA
HENRY BAGHDASSARIAN
 Principal Inspector
 (310) 914-3905
 henry.baghdassarian@lacity.org

ELEVATOR INSPECTION WLA
RICHARD OKE
 Sr Safety Eng Elev
 (310) 914-3967
 richard.oke@lacity.org

PRESSURE VESSEL INSPECTION CODE DESK WLA
JUAN CARLOS CHAVEZ
 Sr Safety Eng Press Ves
 (310) 914-3973
 juanCarlos.chavez@lacity.org

SAN PEDRO
NICK LAROCCA
 Sr Build Inspector
 (310) 732-4552
 nick.larocca@lacity.org

ELEVATOR CODE INFORMATION & APPOINTMENTS
 (213) 202-9844
 Fax (213) 202-9922

LAX
JONATHAN ALLEN
 Sr Build Inspector
 (213) 473-2153
 jonathan.allen@lacity.org

RSBEP/ICM ADMIN SUPPORT
TATIA WADE
 Administrative Clerk
 (213) 482-0464
 tatia.wade@lacity.org

INSPECTION BUREAU
JOHN BIEZINS, Chief
 (213) 482-6712
 john.biezins@lacity.org
DENVER (SHAWN) HARGIS, Assistant Chief
 (213) 482-0342
 denver.hargis@lacity.org

**PLUMBING/HEATING AND
 FIRE SPRINKLER INSPECTION**
STEVE KIMBLE
 Chief Inspector
 (213) 482-6787
 steven.kimble@lacity.org

ELECTRICAL INSPECTION
JACK CONGER
 Chief Inspector
 (213) 202-9906
 jack.conger@lacity.org

**PLUMBING/HEATING/FIRE
 SPRINKLER INSPECTION**
TIM GRIFFITH
 Principal Inspector
 (213) 482-0354
 tim.griffith@lacity.org

**PLUMBING/HEATING/FIRE
 SPRINKLER INSPECTION**
VACANT
 Principal Inspector
 (213) 202-9885
 @lacity.org

ELECTRICAL INSPECTION
WILLIAM MITCHELL
 Principal Inspector
 (213) 482-0377
 william.mitchell@lacity.org

ELECTRICAL INSPECTION
YERVAND CHAPANYAN
 Principal Inspector
 (213) 482-0302
 yervand.chapanyan@lacity.org

METRO
DEXTER JACKSON, Sr Plumbing
 (213) 482-0061 – dexter.jackson@lacity.org
KEVIN SIMONDS, Sr Fire Sprinkler
 (213) 482-7207 – kevin.simonds@lacity.org
VICENTE VARGAS, Sr HVAC
 (213) 202-5614 – vicente.vargas@lacity.org

VAN NUYS
CORNELL EWELL, Sr Plumbing
 (818) 374-1154 – cornell.ewell@lacity.org
JOSEPH TAYLOR, Sr Fire Sprinkler
 (818) 374-9935 – joseph.taylor@lacity.org
KEVIN BROWN, Sr HVAC
 (818) 374-1153 – kevin.brown@lacity.org

METRO
JOHNNY YUTRONICH
 Sr Electrical Inspector
 (213) 202-3176
 johnny.yutronich@lacity.org

VAN NUYS
DOUG VERRAL
 Sr Electrical Inspector
 (818) 374-1136
 douglas.verral@lacity.org

WEST LA
MICHAEL LUNG, Sr Plumbing
 (310) 914-3949 – michael.lung@lacity.org
JOHN BARTON, Sr Fire Sprinkler
 (310) 914-3955 – john.barton@lacity.org
KEVIN KIDD, Sr HVAC
 (310) 914-3961 – kevin.kidd@lacity.org

SAN PEDRO
MICHAEL LUNG
 Plumbing Inspector
 (310) 914-3949
 michael.lung@lacity.org

WEST LA
MIKE TILK
 Sr Electrical Inspector
 (310) 914-3942
 michael.tilk@lacity.org

SAN PEDRO
WON LEE
 Sr Electrical Inspector
 (310) 732-4549
 won.lee@lacity.org

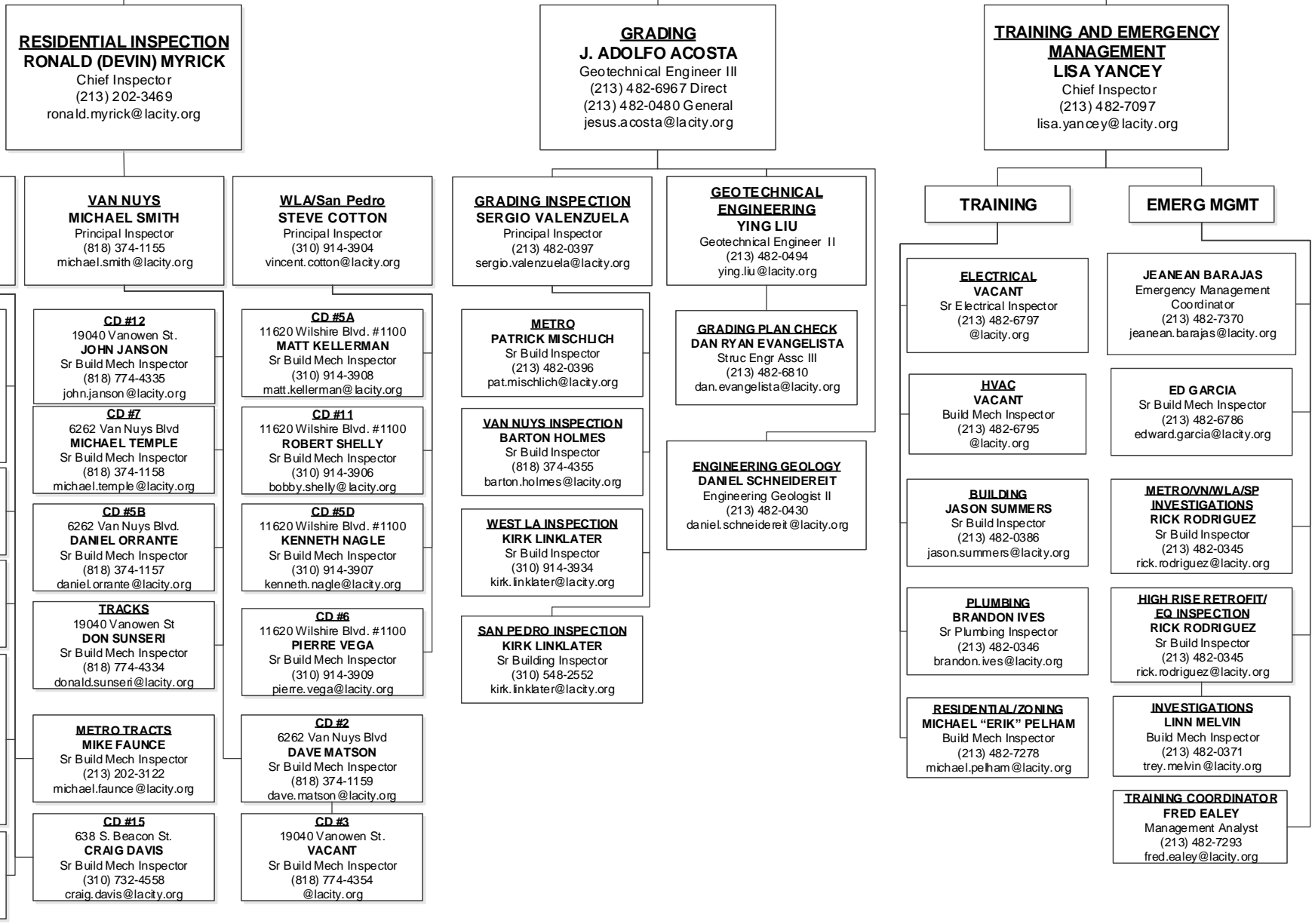
LAX
GUADALUPE TOLEDO, Fire Sprinkler
 (213) 473-2143 – guadalupe.toledo@lacity.org
PRESTON GILLIARD, Sr Plumbing
 (213) 473-2151 – preston.gilliard@lacity.org
CHRIS NORRIS, Sr HVAC
 (213) 473-2142 – christopher.norris@lacity.org

ELECTRICAL CODE INFORMATION
RICK HORN
 Sr Electrical Inspector
 (213) 482-0057
 richard.horn@lacity.org

LAX
JOHN DESPARD
 Sr Electrical Inspector
 (310) 473-2150
 john.despard@lacity.org

PLUMBING CODE INFORMATION
 (213) 482-0061
 Fax (213) 482-7410

INSPECTION BUREAU
JOHN BIEZINS, Chief
 (213) 482-6712
 john.biezins@lacity.org
VICTOR CUEVAS, Assistant Chief
 (213) 202-9869
 victor.cuevas@lacity.org



RESIDENTIAL INSPECTION
RONALD (DEVIN) MYRICK
 Chief Inspector
 (213) 202-3469
 ronald.myrick@lacity.org

GRADING
J. ADOLFO ACOSTA
 Geotechnical Engineer III
 (213) 482-6967 Direct
 (213) 482-0480 General
 jesus.acosta@lacity.org

TRAINING AND EMERGENCY MANAGEMENT
LISA YANCEY
 Chief Inspector
 (213) 482-7097
 lisa.yancey@lacity.org

METRO
D. BRIAN HAUFF
 Principal Inspector
 (213) 482-0323
 derold.hauff@lacity.org

VAN NUYS
MICHAEL SMITH
 Principal Inspector
 (818) 374-1155
 michael.smith@lacity.org

WLA/San Pedro
STEVE COTTON
 Principal Inspector
 (310) 914-3904
 vincent.cotton@lacity.org

GRADING INSPECTION
SERGIO VALENZUELA
 Principal Inspector
 (213) 482-0397
 sergio.valenzuela@lacity.org

GEO TECHNICAL ENGINEERING
YING LIU
 Geotechnical Engineer II
 (213) 482-0494
 ying.liu@lacity.org

TRAINING

EMERG MGMT

CD #10 & #13
RUBEN SALAS
 Sr Build Mech Inspector
 (213) 482-6962
 ruben.salas@lacity.org

CD #12
 19040 Vanowen St.
JOHN JANSON
 Sr Build Mech Inspector
 (818) 774-4335
 john.janson@lacity.org

CD #5A
 11620 Wilshire Blvd. #1100
MATT KELLERMAN
 Sr Build Mech Inspector
 (310) 914-3908
 matt.kellerman@lacity.org

METRO
PATRICK MISCHLICH
 Sr Build Inspector
 (213) 482-0396
 pat.mischlich@lacity.org

GRADING PLAN CHECK
DAN RYAN EVANGELISTA
 Struc Engr Assc III
 (213) 482-6810
 dan.evangelista@lacity.org

ELECTRICAL
VACANT
 Sr Electrical Inspector
 (213) 482-6797
 @lacity.org

JEANEAN BARAJAS
 Emergency Management Coordinator
 (213) 482-7370
 jeanean.barajas@lacity.org

VACANT
 (818) 374-1159
 Sr Build Mech Inspector
 @lacity.org

CD #7
 6262 Van Nuys Blvd
MICHAEL TEMPLE
 Sr Build Mech Inspector
 (818) 374-1158
 michael.temple@lacity.org

CD #11
 11620 Wilshire Blvd. #1100
ROBERT SHELLY
 Sr Build Mech Inspector
 (310) 914-3906
 bobby.shelly@lacity.org

VAN NUYS INSPECTION
BARTON HOLMES
 Sr Build Inspector
 (818) 374-4355
 barton.holmes@lacity.org

ENGINEERING GEOLOGY
DANIEL SCHNEIDERREIT
 Engineering Geologist II
 (213) 482-0430
 daniel.schneiderreit@lacity.org

HVAC
VACANT
 Build Mech Inspector
 (213) 482-6795
 @lacity.org

ED GARCIA
 Sr Build Mech Inspector
 (213) 482-6786
 edward.garcia@lacity.org

CD #5C
 221 N. Figueroa, 8th Fl.
BRAD BESCOS
 Sr Build Mech Inspector
 (213) 202-3431
 brad.bescos@lacity.org

CD #5B
 6262 Van Nuys Blvd.
DANIEL ORRANTE
 Sr Build Mech Inspector
 (818) 374-1157
 daniel.orrante@lacity.org

CD #5D
 11620 Wilshire Blvd. #1100
KENNETH NAGLE
 Sr Build Mech Inspector
 (310) 914-3907
 kenneth.nagle@lacity.org

WEST LA INSPECTION
KIRK LINKLATER
 Sr Build Inspector
 (310) 914-3934
 kirk.linklater@lacity.org

BUILDING
JASON SUMMERS
 Sr Build Inspector
 (213) 482-0386
 jason.summers@lacity.org

METRO/WLA/SP INVESTIGATIONS
RICK RODRIGUEZ
 Sr Build Inspector
 (213) 482-0345
 rick.rodriguez@lacity.org

CD #1 & #14
 221 N. Figueroa, 8th Fl.
BOB BLAND
 Sr Build Mech Inspector
 (213) 202-3445
 elmer.bland@lacity.org

TRACKS
 19040 Vanowen St
DON SUNSERI
 Sr Build Mech Inspector
 (818) 774-4334
 donald.sunseri@lacity.org

CD #6
 11620 Wilshire Blvd. #1100
PIERRE VEGA
 Sr Build Mech Inspector
 (310) 914-3909
 pierre.vega@lacity.org

SAN PEDRO INSPECTION
KIRK LINKLATER
 Sr Building Inspector
 (310) 548-2552
 kirk.linklater@lacity.org

PLUMBING
BRANDON IVES
 Sr Plumbing Inspector
 (213) 482-0346
 brandon.ives@lacity.org

HIGH RISE RETROFIT/EQ INSPECTION
RICK RODRIGUEZ
 Sr Build Inspector
 (213) 482-0345
 rick.rodriguez@lacity.org

CD #8 & #9
 221 N. Figueroa, 8th Fl.
HAL FULTZ
 Sr Build Mech Inspector
 (213) 202-3211
 hal.fultz@lacity.org

METRO TRACTS
MIKE FAUNCE
 Sr Build Mech Inspector
 (213) 202-3122
 michael.faunce@lacity.org

CD #2
 6262 Van Nuys Blvd
DAVE MATSON
 Sr Build Mech Inspector
 (818) 374-1159
 dave.matson@lacity.org

RESIDENTIAL/ZONING
MICHAEL "ERIK" PELHAM
 Build Mech Inspector
 (213) 482-7278
 michael.pelham@lacity.org

INVESTIGATIONS
LINN MELVIN
 Build Mech Inspector
 (213) 482-0371
 trey.melvin@lacity.org

DONALD CRICHLAW
 (213) 202-3211
 Sr Build Mech Inspector
 donald.crichlow@lacity.org

CD #15
 638 S. Beacon St.
CRAIG DAVIS
 Sr Build Mech Inspector
 (310) 732-4558
 craig.davis@lacity.org

CD #3
 19040 Vanowen St.
VACANT
 Sr Build Mech Inspector
 (818) 774-4354
 @lacity.org

TRAINING COORDINATOR
FRED EALEY
 Management Analyst
 (213) 482-7293
 fred.ealey@lacity.org

CD #4
 221 N. Figueroa, 8th Fl.
CHARLES BOGHOSKHAN
 Sr Build Mech Inspector
 (213) 202-3261
 charles.boghoskhan@lacity.org

CODE ENFORCEMENT BUREAU
CATHERINE NUEZCA-GABA, Chief
 (213) 252-3931
 catherine.nuezcagaba@lacity.org
ERIC JAKEMAN, Assistant Chief
 (213) 252-3976
 eric.jakeman@lacity.org

FAITH MAULUPE
 Principal Clerk
 (213) 252-3376
 faith.maulupe@lacity.org

GENERAL ENFORCEMENT & SPECIALTY/SIGNS INSPECTION
JEFF NAPIER
 Chief Inspector/Public Information Officer
 (213) 263-6846
 jeff.napier@lacity.org

GENERAL ENFORCEMENT, ANNUAL INSPECTION MONITORING, PROACTIVE CODE ENFORCEMENT, & VACANT BUILDING ABATEMENT
VACANT
 Chief Inspector
 (213) 252-3931
 @lacity.org

CITYWIDE SIGNS
DANIEL SANCHEZ
 Principal Inspector
 (213) 252-3926
 daniel.sanchez@lacity.org

CENTRAL REGION GENERAL ENFORCEMENT
DANIEL SANCHEZ
 Principal Inspector
 (213) 252-3926
 daniel.sanchez@lacity.org

SOUTH REGION GENERAL ENFORCEMENT
BRUCE TODD
 Principal Inspector
 (213) 978-4502
 bruce.todd@lacity.org

CITYWIDE ANNUAL INSPECTION MONITORING
MIKE BEVERIDGE
 Principal Inspector
 (818) 374-9806
 michael.beveridge@lacity.org

NORTH REGION GENERAL ENFORCEMENT
MIKE BEVERIDGE
 Principal Inspector
 (818) 374-9806
 michael.beveridge@lacity.org

CITYWIDE PACE 2 & 3
ARMOND GREGORYONA
 Principal Inspector
 (213) 252-3082
 armond.gregoryona@lacity.org

CITYWIDE VBA & FORECLOSURE REGISTRY PROGRAM
ARMOND GREGORYONA
 Principal Inspector
 (213) 252-3082
 armond.gregoryona@lacity.org

SIGN ENFORCEMENT
SHAWN ESHBACH
 Sr Build Mech Inspector
 (213) 252-3909
 shawn.eshbach@lacity.org

CD #1
AUGUSTUS ALBAS
 Sr Build Mech Inspector
 (213) 252-3038
 augustus.albas@lacity.org

CD #8
DANIEL GONZALEZ
 Sr Build Mech Inspector
 (213) 978-4504
 daniel.a.gonzalez@lacity.org

NORTH REGION
WILLIE ROSS
 Sr Build Mech Inspector
 (818) 374-9837
 willie.ross@lacity.org

CD #2
DAVID HICKMAN
 Sr Build Mech Inspector
 (818) 230-0288
 david.hickman@lacity.org

PRO-ACTIVE CODE ENFORCEMENT 2
BRYAN EPSTEIN
 Sr Build Mech Inspector
 (213) 252-3352
 bryan.epstein@lacity.org

VACANT BUILDING ABATEMENT
MICHAEL SCHULZINGER
 Sr Build Mech Inspector
 (213) 252-3962
 michael.schulzinger@lacity.org

NEW CONSTRUCTION
SHAWN ESHBACH
 Sr Build Mech Inspector
 (213) 252-3909
 shawn.eshbach@lacity.org

CD #4
JOEL WILLIAMS
 Sr Build Mech Inspector
 (213) 482-0469
 joel.williams@lacity.org

CD #9
SAM PORTILLO
 Sr Build Mech Inspector
 (213) 978-4495
 sam.portillo@lacity.org

METRO REGION
CHRISTOPHER LEKO
 Sr Build Inspector
 (213) 252-3041
 christopher.leko@lacity.org

CD #3
ROBERT SUNSERI
 Sr Build Mech Inspector
 (818) 374-9857
 robert.sunseri@lacity.org

PRO-ACTIVE CODE ENFORCEMENT 3
RICK CARPENTER
 Sr Build Mech Inspector
 (213) 252-3349
 ulric.carpenter@lacity.org

OFF-SITE SIGNS PERIODIC INSPECTION PROGRAM
SHAWN ESHBACH
 Sr Build Mech Inspector
 (213) 252-3909
 shawn.eshbach@lacity.org

CD #5
ROBERT MINASSIANS
 Sr Build Mech Inspector
 (213) 252-3049
 robert.minassians@lacity.org

CD #10
JOHN JAEGER
 Sr Build Mech Inspector
 (213) 252-3964
 john.jaegers@lacity.org

CD #6
DAVID JAMES
 Sr Build Mech Inspector
 (818) 374-9858
 dave.james@lacity.org

CD #13
MARSHALL RUMPF
 Sr Build Mech Inspector
 (213) 252-3960
 marshall.rumpf@lacity.org

CD #11
JOHN MATTILLO
 Sr Build Mech Inspector
 (213) 978-4498
 john.mattillo@lacity.org

CD #7
MARK BEVELAQUA
 Sr Build Inspector
 (818) 374-9820
 mark.bevelaqua@lacity.org

CD #14
MARK VAN SLOOTEN
 Sr Build Mech Inspector
 (323) 526-9348
 mark.vanslooten@lacity.org

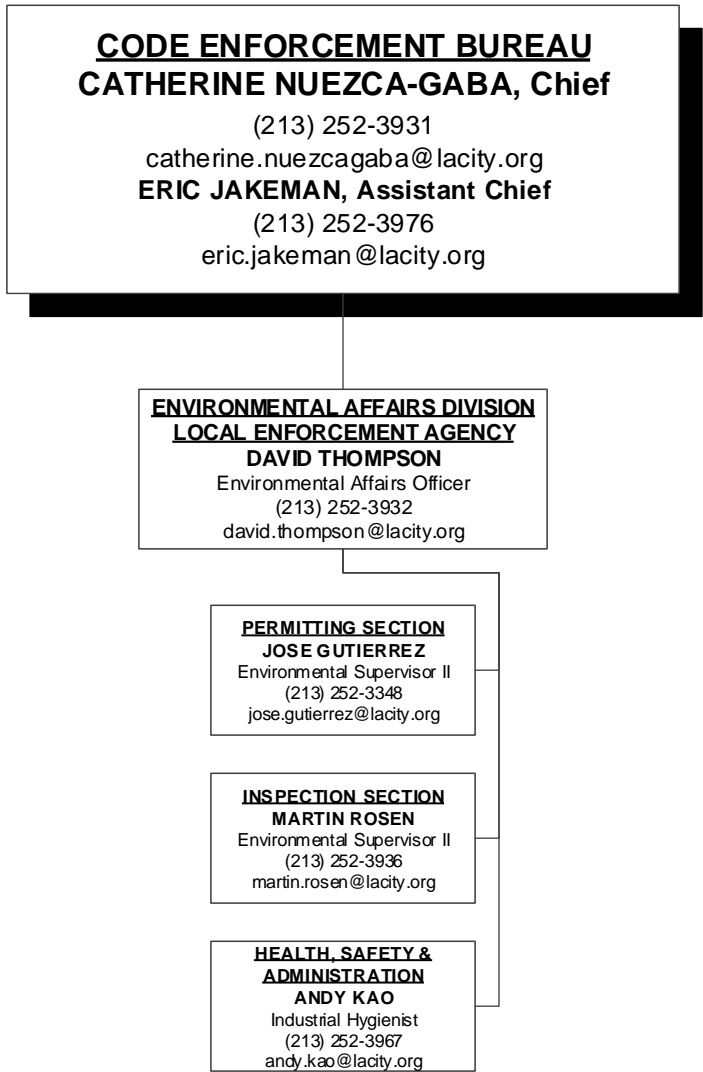
CD #15
PAUL BECKER
 Sr Build Mech Inspector
 (310) 732-4530
 paul.becker@lacity.org

CD #12
VACANT
 Sr Build Mech Inspector
 (818) 374-9853
 @lacity.org

LEGAL LIAISON
MARK RUDE
 Sr Build Mech Inspector
 (213) 252-3393
 mark.rude@lacity.org

LEGAL LIAISON
CLAUDIO MORENO
 Sr Build Mech Inspector
 (213) 978-4503
 claudio.moreno@lacity.org

LEGAL LIAISON
ROBERT GOLD
 Sr Build Mech Inspector
 (818) 374-9859
 robert.gold@lacity.org



RESOURCE MANAGEMENT BUREAU
ANA MAE YUTAN, Chief
 (213) 482-6703
 anamae.yutan@lacity.org

VERONICA E. SALUMBIDES,
Assistant Chief
 Chief Mgmt Analyst
 (213) 482-6782
 veronica.salumbides@lacity.org

CYNTHIA KHO, Assistant Chief
 Dept Chief Accountant IV
 (213) 482-6815
 cynthia.kho@lacity.org

ADMINISTRATIVE SERVICES DIVISION

RISK & RECORDS MANAGEMENT DIVISION

FINANCIAL SERVICES DIVISION

ZACHARY DE CORSE
 Sr Mgmt Analyst II
 (213) 482-6746
 zachary.decorse@lacity.org

TONY PELAEZ
 Sr Mgmt Analyst II
 (213) 482-6766
 tony.pelaez@lacity.org

VACANT
 Principal Accountant II
 (213) 482-6804
 @lacity.org

CASHIERING SERVICES
VICTORIA VASQUEZ
 Chief Cashier
 (213) 482-6953
 mariavictoria.vasquez@lacity.org

FACILITIES, TRAVEL REQUESTS, AND FORMS CONTROL
SOMAPUN PONGQUAN
 Sr Mgmt Analyst I
 (213) 482-6748
 somapun.pongquan@lacity.org

CUSTODIAN OF RECORDS
MICHAEL BOUVET
 Management Analyst
 (213) 482-6704
 michael.bouvet@lacity.org

ACCOUNTS PAYABLE
EMILY HU
 Sr Accountant I
 (213) 482-6534
 emily.hu@lacity.org

PURCHASING, INVOICE REVIEW, AND REPORTS MANAGER
RYAN SOLIS
 Management Analyst
 (213) 482-7318
 ryan.sdis@lacity.org

DATA AND RECORDS MANAGEMENT
VACANT
 Chief Clerk
 (213) 482-6757
 @lacity.org

SUPPLIES
JOHN BOROUGH
 Store Keeper II
 (213) 482-6813
 john.borough@lacity.org

CONTRACTS AND GRANTS ADMINISTRATOR, NEWSLETTERS
CHRISTINE WAI
 Sr Mgmt Analyst I
 (213) 482-6740
 christine.wai@lacity.org

IDIS & SUBJECT SPECIALTY CALL GROUP
CHAUNTEL MARTIN
 Principal Clerk
 (213) 482-6560
 chauntel.martin@lacity.org

LIENS
CHARLES KALIBBALA
 Sr Accountant I
 (213) 202-9829
 charles.kalibbala@lacity.org

COMM. SERVICES AND MAJOR TENANT IMPROVEMENTS COORDINATOR
PATRICK EVERDING
 Management Analyst
 (213) 482-6741
 patrick.everding@lacity.org

SUBJECT SPECIALTY CALL GROUP
LORENA ESPINOZA
 Sr Admin Clerk
 (213) 482-6549
 lorena.espinoza@lacity.org

PAYROLL AND FUND ADMIN
EMMA PANGILINAN
 Sr Accountant I
 (213) 482-7347
 emma.pangilinan@lacity.org

ADMINISTRATIVE SERVICES DIVISION MAIN LINE
 (213) 482-6776
 LADBS.ASD@lacity.org

RESIDENTIAL PROPERTY REPORTS
SUNEETA ATYAM
 Sr Admin Clerk
 (213) 482-6772
 suneeta.atyam@lacity.org

TECHNOLOGY SERVICES BUREAU
VACANT, Chief
 (213) 482-0001
 @lacity.org
GREG WILCOX, Director of Systems
 (213) 482-0031
 greg.wilcox@lacity.org

ADMINISTRATIVE DIVISION
CINDY OHARA
 Systems Programmer II
 (213) 482-0002
 cindy.ohara@lacity.org

CUSTOMER ENGAGEMENT DIVISION
MINH ONG
 Build Civil Engr I
 (213) 482-0029
 minh.ong@lacity.org

APPLICATION SERVICES DIVISION
JEANNE LY
 Systems Programmer III
 (213) 482-0046
 jeanne.ly@lacity.org

OPERATIONS AND INFRASTRUCTURE DIVISION
KENNETH SMITH
 Sr Sys Analyst II
 (213) 202-3101
 kenneth.smith@lacity.org

BUSINESS ANALYSIS SERVICES
REBECCA ARIOSIA
 Sr Sys Analyst I
 (213) 482-0041
 rebecca.ariosa@lacity.org

SUBJECT MATTER EXPERT SERVICES
VACANT
 (213) 482-0031
 @lacity.org

WEBSITE SUPPORT
VACANT
 (213) 482-0031
 @lacity.org

DATA AND SYSTEM SUPPORT
LING KE
 Database Archite ct
 (213) 482-0026
 ling.ke@lacity.org

DATA AND SYSTEMS SUPPORT
TUNG PHAN
 Database Archite ct
 (213) 482-0031
 tung.phan@lacity.org

APPLICATION DEVELOPMENT
SHANNON HAAS
 Systems Programmer I
 (213) 482-0050
 shannon.haas@lacity.org

PERMITTING SYSTEM
WEI BIN HE
 Programmer Analyst V
 (213) 482-0037
 wei.he@lacity.org

INFRASTRUCTURE AND DEVOPS SUPPORT
LINDA KHA
 Systems Programmer III
 (213) 482-0051
 linda.kha@lacity.org

NETWORK AND SECURITY SUPPORT
KEN LAM
 Systems Programmer III
 (213) 202-9962
 ken.lam@lacity.org

OPERATIONS
VACANT
 Sr Sys Analyst I
 (213) 482-0031
 @lacity.org